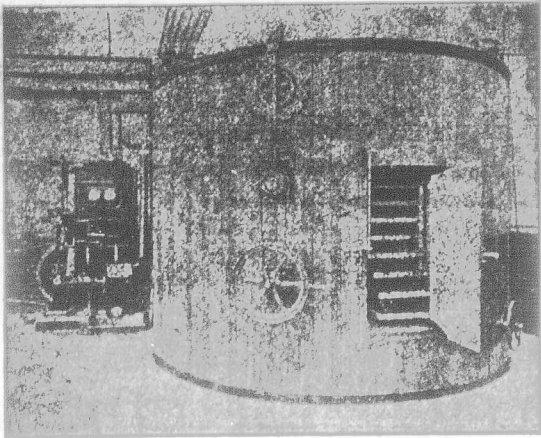


A Revolution In Refrigeration ...

No loss of cold



No. 4 Cooler as used for Chocolate Cooling.

THE EXPRESS ...  
ROTARY COOLER.

(McRae &amp; Broadbent's Patents).

Can be used in conjunction with existing plant. Results fully guaranteed. The Ideal Apparatus for Cooling and Preserving Articles of any kind. The highest standard of efficiency and economy.

**THE EXPRESS ROTARY COOLER  
SYNDICATE, LTD.**

11 Lord Street, - Huddersfield, Eng.

WORKS:  
Forest Road, Dalston.

Special prices to Canadians under the new tariff.

# Thomas Bird & Sons

MANUFACTURERS OF EVERY DESCRIPTION OF

**Men's and Youths' Boots and Shoes,**  
*FOR HOME AND EXPORT.***THE "GLOBE" BRAND GUARANTEED.****Our Goods are noted for good Honest Wear, so give satis-**  
**faction to the Public.****SAMPLES SUBMITTED WITH PLEASURE.****FACTORY:****Globe Works, Bath Road, Kettering, Eng.****THE "PATENT" BURNER.**

English and Continental Patents Secured.

**The New Export Incandescent Lighting Company, Ltd.,**  
**36 Mansell St., LONDON, E. Eng.**

having had numerous enquiries for a Burner which being simple in construction and easy to clean shall meet the popular demand as to price, have pleasure in submitting this Burner with confidence to their Clients.

It is Brass throughout, consisting of two pieces only—the one part is shewn in Fig. 3, containing the gallery holder, chimney guard and injector, this latter having in its base a threaded orifice to take the adapter. The second part is shewn in Fig. 1, which completes the burner. This section is gently inserted into the support shewn in Fig. 3. It is manufactured to fit perfectly so as to prevent escape of gas or the ingress of air save to the space and manner specially provided.

