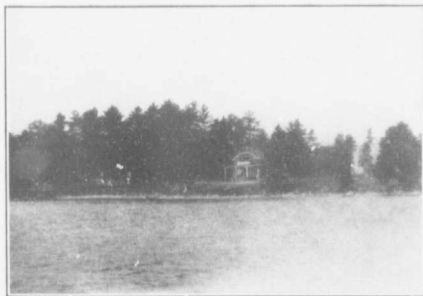




OVERLOOKING KEMPENFELDT BAY.



COTTAGE ON THE WATER FRONT

close association with this enterprise have organized and brought into being "The Lake Simcoe Navigation Co.," which company has purchased the palace steamer "Otonabee" and put it into service on the lake giving connection between Peninsular Park and Barrie (where it meets all regular Grand Trunk trains) and in addition furnishing connection with Jackson's Point, Roche's Point, Belle Ewart and other places to which points a regular service is maintained with Toronto, by both electric and Grand Trunk railway lines.