

OPPORTUNITY

Alberta

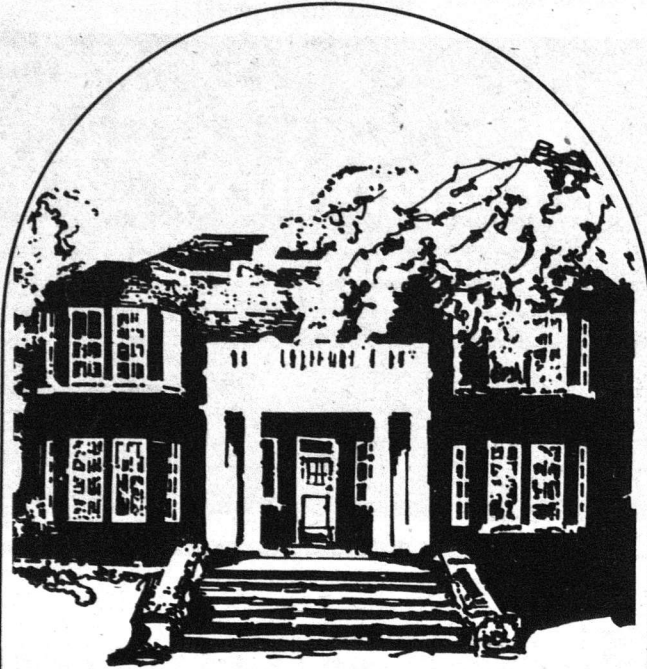
CHALLENGING OPPORTUNITIES IN PERSONNEL ADMINISTRATION

A number of training positions, leading to a challenging and rewarding career in Personnel Administration, will be available in Edmonton in May, 1981, with the Government of Alberta.

Graduates with Bachelor's or Master's Degrees in Business or Personnel related fields, who are interested in these opportunities, should contact the Canada Employment Centre on Campus for further information.

Deadline date for applications is November 7, 1980.

Interviews will be held at the Canada Employment Centre on Campus, November 24-28, 1980.
Competition #0125-22



Winter visitors are welcome at

RUTHERFORD HOUSE

11153 Saskatchewan Drive

In 1911 Alexander Cameron Rutherford, Alberta's first premier and founder of the University of Alberta, built this stately mansion. You can almost see a graduating class seated on the central oak staircase listening to Rutherford's address, an occasion that came to be called the Founder's Day Tea.

Furnished and restored to its original beauty, Rutherford House now rests on the modern campus of the University of Alberta, an enduring legacy from another era.

WINTER HOURS to Victoria Day

Weekdays — school and group tours by appointment, 1 week in advance, phone 427-5708
Saturday and Sunday — open to the public noon to 6:00 p.m.

FREE ADMISSION

Alberta
CULTURE
Historic Sites

Leave chargex at home

Join and travel cheap

by Greg Harris

Name the card honored internationally that can get you canoes in Edmonton, cycling trips in the British Isles, and overnight accommodation in Germany's castles. Chargex? Maybe, but a

Canadian Hostelling Association (CHA) membership card is a more inexpensive and educational way to travel.

The CHA is a non-profit association. It provides year round opportunities for outdoor recrea-

tion and inexpensive educational travel through hostelling.

CHA members enjoy a variety of benefits: low cost accommodation, reduced rental rates on backpacks, tents, canoes, sleeping bags and skis, and discounts on group trips in Canada and worldwide.

But "the neatest part about hostelling is in meeting people from all over the world," says Merle Prinsen, Executive Director of the North West Regional Branch of the CHA.

As charter members of the International Youth Hostel Federation, CHA members have access to over 4500 hostels in 53 different countries. Prices for accommodation range from 50¢ per night in Poland to \$6.80 per night in the Netherlands.

Some overseas hostels are located in castles in Germany, pagodas in Japan and Tudor mansions in England. The hostels offer leisure pursuits suited to the season and geography; for example, cycling tours are conducted in the British Isles, skiing and hiking excursions in New Zealand.

Hostels also vary in terms of the modern conveniences they offer. Urban hostels can have all the comforts of home with meals and color T.V.; backwoods hostels sometimes lack even indoor plumbing and electricity.

Alberta has 19 hostels and the twentieth is currently under construction in the Nordegg area. Programs are offered in mountain climbing, downhill and cross-country skiing.

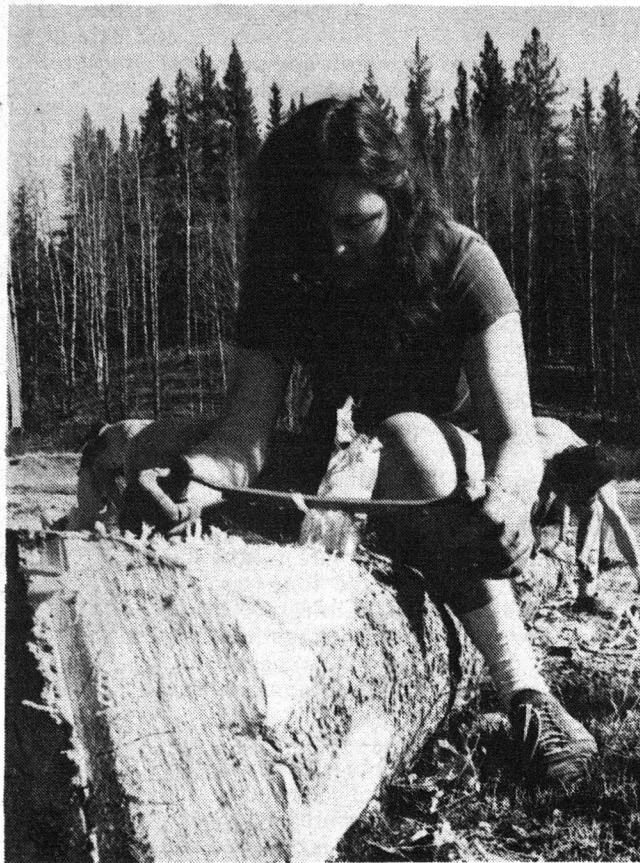
Anyone is eligible for membership in the CHA.

"There is no age limit in staying in a hostel... a lot of people are unaware that it is open to everyone," Prinsen says.

While hostels have traditionally been most popular among young people, "a lot of middle aged people are taking advantage of hostels because of the high price of hotels," she says. She quoted the current base rate of hotel accommodation in Amsterdam as "\$108 per night."

The price of a one year membership in the CHA is \$15 for those 18 and over. Junior memberships (under 18) cost \$9 per year, and family memberships are available at \$30 per year. The CHA also offers life memberships at \$90.

For more information, drop by The Hostel Shop at 10926-88 Avenue, or phone 439-3089 or 432-7798.



A PROFESSIONAL CAREER

AS A

Chartered Accountant

Our representatives will be pleased to discuss your plans for a career in Chartered Accountancy during their annual recruiting visit on:

Monday, October 27, 1980

Tuesday, October 28, 1980

Thursday, October 30, 1980

Friday, October 31, 1980

Monday, November 3, 1980

Please contact your University Manpower Office to arrange a convenient time for a personal interview on campus or to obtain a copy of our recruiting brochure.

If the dates of our visit do not suit your time schedule, you are invited to call:

Mr. Gary Wooldridge at 423-4822

2700 Oxford Tower — Edmonton

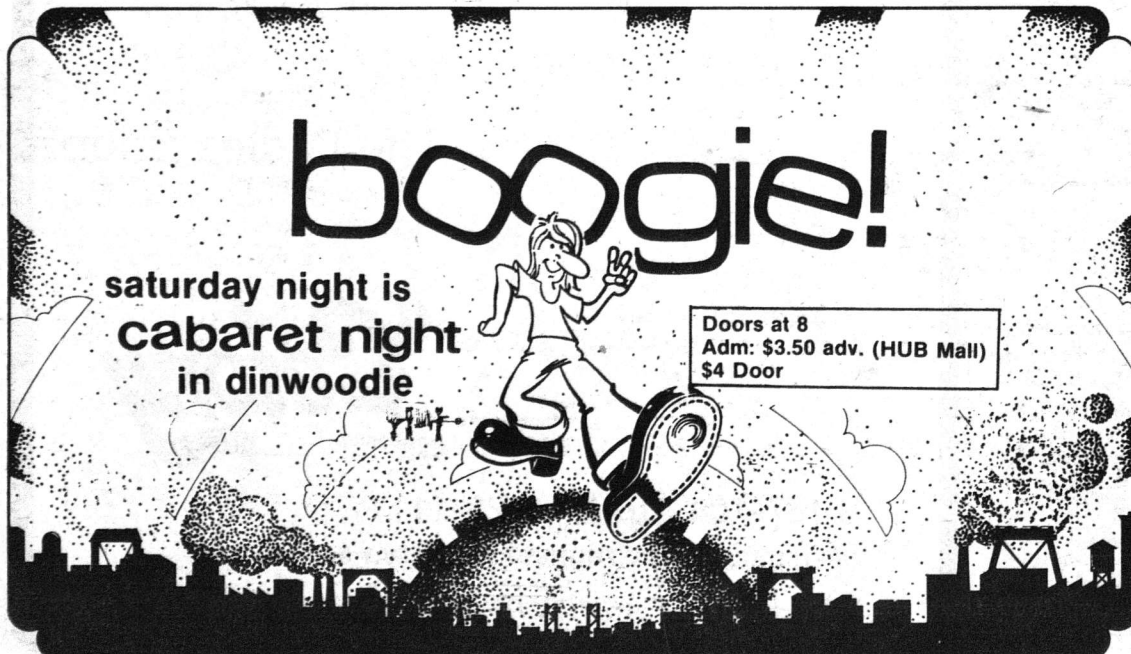
COOPERS & LYBRAND



boogie!

saturday night is
cabaret night
in dinwoodie

Doors at 8
Adm: \$3.50 adv. (HUB Mall)
\$4 Door



PORTRAITS
of
DISTINCTION

**Goertz
STUDIOS**

OFFICIAL CAMPUS PHOTOGRAPHER

NOW LOCATED IN 9012 HUB

Make Your Appointment NOW

PHONE 433-8244

SPECIAL STUDENT PRICES