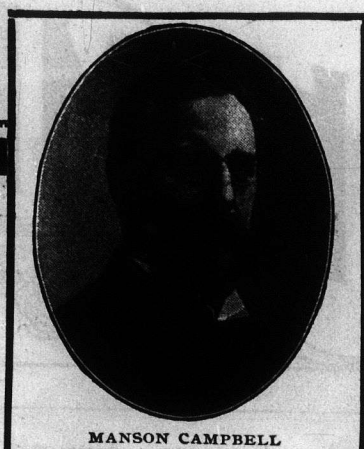


If you farm for profit, you need one of my scales.

ONLY my scales are sold direct from the one Canadian maker who has made good with the Canadian farmer on a straight business basis.



MANSON CAMPBELL

I will make the price right and the terms easy.

You can't farm right without a scale; and you can't find a scale that is equal to those I make.

MANSON CAMPBELL, President.

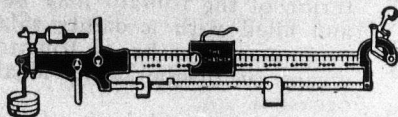
EVERY CHATHAM PITLESS SCALE is sold with a Government Inspection Certificate that warrants its accuracy.

There is no extra charge for this warranty, signed by a resident Government Inspector, who tests every scale we make before it leaves the factory.

This Scale is COMPLETE.

Any other scale comes to you as a few parts with a huge blue print, showing how you can build the rest of it; and you have to build it, too, before you do any weighing. This Chatham Pitless Scale is absolutely complete, built of heavy steel, staunchly bolted together, easily erected ready for use in a few hours. Read Mr. MacLean's letter below. It stands solidly on its broad steel feet, clear above ground, needing no fixed foundations. Move it readily anywhere. You cannot do that with a pit scale.

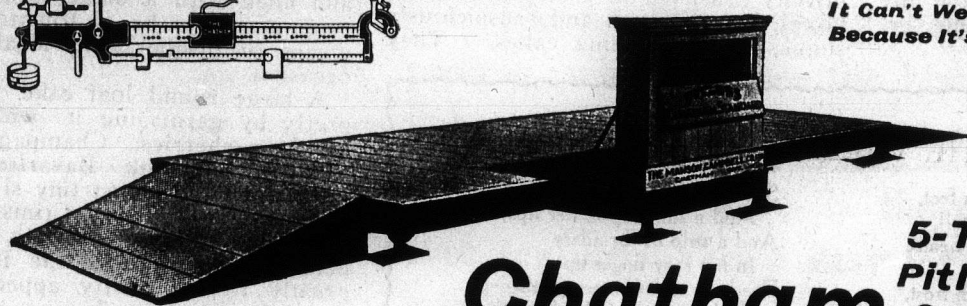
THE FULL CAPACITY COMPOUND BEAM



Can't Get Out of Order

No check rods, no frail parts to get out of order. Compound beam, finely finished, fully tested, shows full tare on lower section,—easily read, no chance of error. Poise on top beam runs on roller bearings; notches lock the beam by a touch at each 200 lbs. Odd weights shown by small poise on lower beam. Weighs with absolute, warranted accuracy up to FIVE FULL TONS—ten thousand pounds. Nothing about it to go wrong—built so well, tested so carefully.

It Can't Wear Out Because It's Steel



5-Ton Pitless Scale

Mr. W. F. MacLean M.P. for East York, says this about The Scale:

"Some days ago the Chatham 5-Ton Pitless Scale ordered from you came to hand. The farm foreman and another man went to work at it in the morning, and in the afternoon they had it all set up and were weighing on it before supper. The directions were so explicit, and the parts so simple that they had no trouble in putting the scale together and verifying the weighing capacity. As well as being useful for weighing hay and straw and things of that kind, it is very useful for weighing cattle and other live stock. One good way of selling horses is to be able to give their exact weight; and the way to get most for cattle and hogs is to know their weight before leaving the farm. Your scales are admirably adapted for every kind of work on the farm."

W. F. MACLEAN.

Big Enough For Any Scale Use

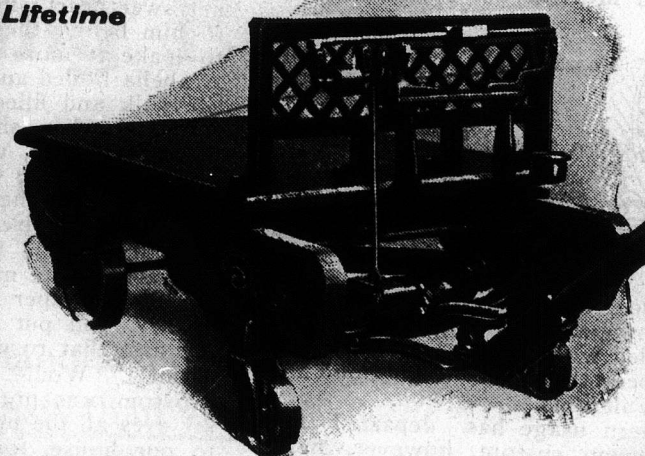
The Chatham's Platform is 8 x 14 feet—ample room for big load of hay, six fat steers, twelve hogs, etc. Platform can't sag, won't wobble, won't get sprung. Whole outfit built so it will last a lifetime and be good every minute. Sold for a fair price, on easy terms, and fully warranted in every way.

Your farm needs such a scale

You ought to weigh all you buy, all you sell; ought to weigh your stock regularly; ought to keep track of your farm's yield—be a BUSINESS farmer. This scale makes it easy to do all this, and thus save its cost to you over and over—because you can't cheat yourself, nor can you be cheated with this on your farm.

The Scale Every Farm Needs
Weights Up To 2,000 Lbs. Accurately

Will Last A Long Lifetime



Chatham Portable Barn Scale

is the handiest truck scale built,—compact, easily moved, readily turned short (front wheels and pole are swivelled). Certified by attached Government Inspection Certificate to be absolutely accurate and well-made. Will weigh up to 2,000 lbs. with positive certainty. Warranted in every way. Priced low enough to suit you. Terms to suit you, too, if you wish credit.

THE SAFEST SCALE TO BUY

No other scale is so fully worth your money. The Chatham levers are solid castings, extra staunch, can't spring a bit, strong enough to carry TWO tons. Main frame all one-piece solid casting. Bearings self-aligning, whole pivot rests on bearing loop,—so scale must weigh right even if not standing level. Chatham drop-lever principle spares weighing parts the jar of loads, thus bearings stay sharp fifty years or more. Send for description, prices, etc.

You Can Afford This Scale



The CHATHAM Portable Platform Scale.

Very handy on any farm, specially so on dairy farm. Weighs accurately to 1,000 lbs. Has Double Brass Beam—no extra charge for this. Strongly built, finely finished. Government inspection warrant attached to each scale. Freight prepaid.

Lowest Priced 1,000 lb. Scale in the World.

204

Address Warehouse Nearest You For Booklet, Price, Terms, Etc.

The Manson Campbell Co., Limited, Chatham, Ont.

BRANDON

MOOSEJAW

CALGARY