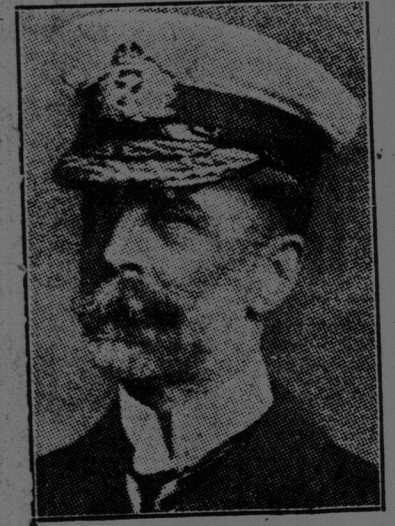


ADMIRAL SIR W. W. PAKET



who was on board H. M. S. "Raleigh" when she ran aground off the wild coast of Labrador. A dozen lives are reported lost.

CENTRAL HEATING PLANT IN NORTH BATTLEFORD

(By M. D. Cadwell, Supt. of Utilities, North Battleford, Sask.)
The Central Steam Heating was first introduced into commercial circles in North Battleford in the summer of 1916, when the steam main was laid from the power plant to the new Public Library on Main street, 750 feet distant. The service was so successful that it was decided to extend the system to serve the business section of the city after the

close of the war, provided ways and means could be arranged to finance the initial cost of the installation.
A very comprehensive research was conducted by the Superintendent of Utilities for a period covering nearly four years, relative to the merits of central heating and its adaptation to local conditions prevailing in North Battleford.

Finally, in the summer of 1920, it was decided that the proposed installation would prove advantageous and profitable to the community, and the city council signified its willingness to proceed at once with the installation, provided the patrons would finance its cost. An advance deposit, representing the fixed figure on a unit basis, and proportional to the requirements of each consumer, was agreed upon, and tenders were called for the supply of necessary material.

A portion of the installation was made in the fall of 1920, but due to the lateness of the season, less than ten consumers received service during the season of 1920-21.

Meanwhile, materials were received from time to time, and in the spring of last year, practically all supplies requisite for the completion of the system were on the ground prior to the date on which excavation could be commenced. By the end of September last, thirty consumers were receiving steam service and the installation of the distribution service was completed.

The popularity of the service and the ever increasing demand for steam necessitated the installation of a new and larger steam main to supplement the original one to a point opposite the Public Library, from which point the main distribution system was commenced in the fall of 1920. This installation has been operating since November 26 last.

The complete installation now com-

prises over 5,000 lineal feet of piping. Practically all underground piping is of genuine wrought iron, a considerable portion of which was imported, as it is not made in Canada above certain sizes. All piping is thoroughly insulated and enclosed in circular casing manufactured in the City of North Battleford, and has been graded with an engineer's level, and all lines were set with the transit.

Complete and perfect drainage has been provided for all piping placed below the ground level. The estimated life of the plant is fifty years.

The total cost of the system as installed approximates \$35,000, and it has been financed by the patrons of the plant, in addition to certain lines of credit which were arranged with two of the firms who submitted the lowest tender for a considerable quantity of the materials required.

The complete system was designed by the writer and was installed by the employees of the Utilities Department under his personal supervision.

There are now upwards of forty consumers, and this figure will exceed fifty in the near future.

During the inclement winter weather, upwards of seventy-five tons, or 150,000 lbs., of steam were delivered to the patrons every twenty-four hours.

Exhaust steam from the generating and ideal central heating plant—the source of heat.

While the City of North Battleford now owns and operates a comprehensive and ideal central heating plant—the first municipally-owned plant in Canada to date—it has not cost the rate-payers a single farthing and is greatly augmenting the revenue from the utilities.

Meanwhile, the operation of this new utility is being watched by engineers and other interested municipal officials from coast to coast, and it is sincerely hoped that the example set by this municipality will in the near future result in similar installations elsewhere, and that the comfort and convenience now being enjoyed by the patrons of the North Battleford heating plant may soon become the privilege of many in other urban centres.

ALEXANDER GRAHAM BELL

(New York Evening Post)

Alexander Graham Bell lived to see his name on blue and white signs everywhere he went, to know that his major contributions to telephony had been an important element in the building of the modern world and to be acclaimed as a grand old man who deserved well of humanity. Few, indeed, are the lives that thus draw serenely to their close, amid plenty, fame and appreciation, and with cury. So many inventors have died in obscurity and poverty that it is good to dwell upon the comforts and universal acclaim which surrounded this ancient of applied science in his declining years.

Bell made his chief contribution to knowledge before he was thirty. He "arrived" early, but he had the true scientific spirit and kept experimenting almost to the end. His curiosity was insatiable. Unlike so many eminent specialists in applied science, he refused to be bounded by his specialty. He was at home everywhere in physics; the problems of light and sound interested him most, but the mechanics of flight and even those of domestic economy received the attention of his searching mind. One of his later arduous suggestions for conserving household

heat and applying it to the hot water system. Another sets forth measures by which an old man somewhat tried by the heat of Washington summers contrived to keep himself cool by conserving cold air.

First and last, Alexander Graham Bell was a practical person. To him life was life and not merely a laboratory in which interesting things could be discovered. His idea was to make know-

MAN PERISHES IN A HOTEL BLAZE

C. P. R. trainmen arriving here yesterday said that Bishop's hotel at Lam-berts Lake, a station near Vancouver, had been destroyed by fire and that an

unknown woodsman in whose room the blaze started had been burned to death. The other inmates escaped.

KING'S APPOINTMENTS TWO PROFESSORS

Professor E. A. Stone has been appointed to fill the chair of mathematics at Kings College. Professor Stone was

for three years dean of engineering and professor of civil engineering at the University of New Brunswick. Professor Walter Clifford will be professor of physics and chemistry.

TWO BOYS DROWNED

Liverpool, N. S., Aug. 14.—Word has been received by W. H. Sterns of the death by drowning of two young sons of his brother, Robie, of New York.

To Holders of Five Year 5½ per cent Canada's Victory Bonds

Issued in 1917 and Maturing 1st December, 1922.

CONVERSION PROPOSALS

THE MINISTER OF FINANCE offers to holders of these bonds who desire to continue their investment in Dominion of Canada securities the privilege of exchanging the maturing bonds for new bonds bearing 5½ per cent interest, payable half yearly, of either of the following classes:—

- (a) Five year bonds, dated 1st November, 1922, to mature 1st November, 1927.
- (b) Ten year bonds, dated 1st November, 1922, to mature 1st November, 1932.

While the maturing bonds will carry interest to 1st December, 1922, the new bonds will commence to earn interest from 1st November, 1922, GIVING A BONUS OF A FULL MONTH'S INTEREST TO THOSE AVAILING THEMSELVES OF THE CONVERSION PRIVILEGE.

This offer is made to holders of the maturing bonds and is not open to other investors. The bonds to be issued under this proposal will be substantially of the same character as those which are maturing, except that the exemption from taxation does not apply to the new issue.

Dated at Ottawa, 8th August, 1922.

Holders of the maturing bonds who wish to avail themselves of this conversion privilege should take their bonds AS EARLY AS POSSIBLE, BUT NOT LATER THAN SEPTEMBER 30th, to a Branch of any Chartered Bank in Canada and receive in exchange an official receipt for the bonds surrendered, containing an undertaking to deliver the corresponding bonds of the new issue.

Holders of maturing fully registered bonds, interest payable by cheque from Ottawa, will receive their December 1 interest cheque as usual. Holders of coupon bonds will detach and retain the last unmaturing coupon before surrendering the bond itself for conversion purposes.

The surrendered bonds will be forwarded by banks to the Minister of Finance at Ottawa, where they will be exchanged for bonds of the new issue, in fully registered, or coupon registered or coupon bearer form carrying interest payable 1st May and 1st November of each year of the duration of the loan, the first interest payment accruing and payable 1st May, 1923. Bonds of the new issue will be sent to the banks for delivery immediately after the receipt of the surrendered bonds.

The bonds of the maturing issue which are not converted under this proposal will be paid off in cash on the 1st December, 1922.

W. S. FIELDING,
Minister of Finance.

ICE COLD

Sold wherever crowds gather and at your favorite store, at refreshment stands, hotels, restaurants, clubs, on dining cars.

Order a case from your dealer

Delicious and Refreshing

The Coca-Cola Company

Biggest thing on the Calendar

Dollar Day

Biggest thing on the Calendar

KITCHEN DEPARTMENT.

- 1 Aluminum Stew Pan, 1 Qt. (Weaver). Regular \$2.00. Dollar Day \$1.60.
- 1 Aluminum Windsor Kettle (Weaver). Regular \$3.75. Dollar Day \$3.00.
- 1 Aluminum Potato Pot, 12 Pint. Regular \$2.90. Dollar Day \$2.36.
- 1 Aluminum Tea Kettle, 14 Pint. Regular \$4.50. Dollar Day \$3.70.
- 1 Aluminum Tea Kettle, 12 Pint. Regular \$4.25. Dollar Day \$3.40.
- 1 Aluminum Fry Pan, 9 inch diameter. Regular \$1.00. Dollar Day \$0.80.
- 1 Aluminum Berlin Kettle and Cover. 6 Pint. Regular \$1.45. Dollar Day \$1.13.
- 1 Aluminum Lipped Sauce Pan, 22-1/2. Regular \$1.50. Dollar Day \$1.20.
- 1 Aluminum Lipped Sauce Pan, 20 Qt. Regular \$1.50. Dollar Day \$1.20.
- 1 Aluminum Preserving Kettle, 8-1/4 Qt. Regular \$1.50. Dollar Day \$1.20.
- 1 Dia. Enamelled Double Boiler, No. 63. Regular \$1.55. Dollar Day \$1.25.
- 1 Dia. Enamelled Double Boiler, No. 82. Regular \$1.80. Dollar Day \$1.45.
- 1 Dia. Enamelled Stove Pot, No. 8. Regular \$1.45. Dollar Day \$1.15.
- 1 Dia. Enamelled Stove Pot, No. 9. Regular \$1.75. Dollar Day \$1.40.
- 1 Dia. Enamelled Tea Kettle, No. 8. Regular \$1.95. Dollar Day \$1.50.
- 1 Pieced Tin Dish Pan, 20 Qt. Regular \$0.60. Dollar Day \$0.45.
- 1 White Enamel Tea Pot, No. 10, good size. Regular \$1.15. Dollar Day \$0.90.
- 1 White Enamel Mixing Bowl, No. 28. Regular \$0.90. Dollar Day \$0.70.
- 1 White Enamel Mixing Bowl, No. 82. Regular \$1.20. Dollar Day \$1.00.
- 1 Pearl Enamel Stove Pot, No. 8. Regular \$1.10. Dollar Day \$0.85.
- 1 Pearl Enamel Potato Pot, No. 8. Regular \$1.25. Dollar Day \$1.00.
- 1 Pearl Enamel Potato Pot, No. 6. Regular \$1.00. Dollar Day \$0.80.
- 1 Pearl Enamel Berlin Kettle, No. 06. Regular \$0.90. Dollar Day \$0.75.
- 1 Pearl Enamel Preserving Kettle, No. 82. Regular \$0.90. Dollar Day \$0.70.
- 1 Pearl Enamel Straight Sauce Pan, No. 400. Regular \$0.90. Dollar Day \$0.75.
- 1 Pearl Enamel Straight Sauce Pan, No. 200. Regular \$0.90. Dollar Day \$0.75.
- 1 Pearl Enamel Dish Pan, 14 Qt. Regular \$0.90. Dollar Day \$0.75.
- 1 White Enamel Bread Box, No. 15. Regular \$1.20. Dollar Day \$1.00.

- 1 White Enamel Bread Box, No. 85. Regular \$2.00. Dollar Day \$1.60.
- 1 Gray Enamel Cake Closet, No. 3500. Regular \$3.50. Dollar Day \$3.00.
- 9 Tins Sterno Canned Heat, Regular \$1.35. Dollar Day \$1.00.
- 1 Large Tin Sterno Heat and Stand. Regular \$4.50. Dollar Day \$3.60.
- 1 Canuck Bread Mixer, No. 6. Regular \$4.50. Dollar Day \$3.60.
- 1 Tin Hoffman's Metal Polish, 1 Qt. Regular \$0.90. Dollar Day \$0.75.
- 1 Tin Royal Metal Polish, 1 Qt. Regular \$0.90. Dollar Day \$0.75.
- 8 Tins Old Dutch Cleanser. Regular \$2.00. Dollar Day \$1.50.
- 1 Liquid Veneer Mop, round. Regular \$2.00. Dollar Day \$1.50.
- 1 Sprutex Mop, round. Regular \$1.00. Dollar Day \$0.80.
- 1 Bath Spray, good rubber. Regular \$1.19. Dollar Day \$0.95.
- 1 Bath Spray and Massage, good rubber. Regular \$1.59. Dollar Day \$1.25.
- 1 Round Tin Wash Boiler, 5 L. C. Regular \$1.60. Dollar Day \$1.20.
- 1 Oval Tin Wash Boiler, 800 L. C. Regular \$1.45. Dollar Day \$1.15.
- 8 Rolls Great West Toilet Paper. Regular \$1.50. Dollar Day \$1.20.
- 1 American Alarm Clock. Regular \$1.49. Dollar Day \$1.15.
- 1 Bread Board, size 34 x 18. Regular \$1.15. Dollar Day \$0.90.
- 1 National Electric Toaster. Regular \$5.00. Dollar Day \$4.00.
- 1 Electric Iron. Regular \$5.00. Dollar Day \$4.00.
- 1 White Enamel Towel Bar, 18 inch. Regular \$1.35. Dollar Day \$1.00.
- 1 White Enamel Towel Bar, 24 inch. Regular \$1.65. Dollar Day \$1.25.
- 1 Galvanized Coal Hod, 17 inch. Regular \$1.05. Dollar Day \$0.85.
- 1 Japanese Coal Hod, 17 inch. Regular \$0.90. Dollar Day \$0.75.
- 1 Galvanized Wash Tub No. 1, 20 1/2 in. diameter. Regular \$1.25. Dollar Day \$1.00.
- 1 Galvanized Wash Tub, No. 3, 25 1/2 in. diameter. Regular \$1.55. Dollar Day \$1.20.
- 1 Glass Wash Board and 4 dozen Spring Clothespins. Regular \$5.00. Dollar Day \$4.00.
- 1 Zinc Wash Board. Regular \$5.00. Dollar Day \$4.00.

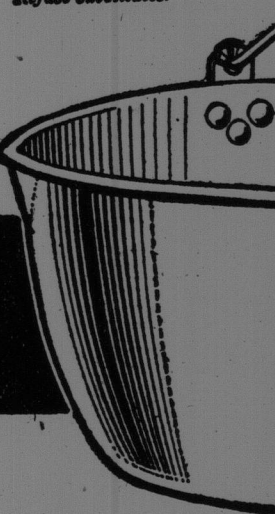
- 1 Simms Best Broom, No. 5. Regular \$1.10. Dollar Day \$0.90.
- 1 Little Beauty Broom. Regular \$0.60. Dollar Day \$0.50.
- 1 Self Wringing Mop, with crank. Regular \$0.65. Dollar Day \$0.50.
- 1 Self Wringing Mop. Regular \$0.45. Dollar Day \$0.35.
- 1 Twine Mop, Simms No. 3. Regular \$0.50. Dollar Day \$0.40.
- Shopping Baskets at special prices. Also Furniture Polish at half price.

SOME SPECIAL PRICES IN OUR TOOL DEPARTMENT.

SILVERWARE AND FANCY GOODS DEPARTMENT.

- Cut Glass Tumblers, Star Cut, 90c. per 1/2 dozen.

Aluminum is the ideal metal for preserving utensils. Look for the "Weaver" trade mark. Refuse substitutes.



- Cut Glass Tumblers, *reath Cut, 90c. per 1/2 dozen.
- Cut Glass Sherbet Glasses, Star Cut, \$3.20 per 1/2 dozen.
- Cut Glass Sherbet Glasses, Grape Cut, \$4.85 per 1/2 dozen.

- Cut Glass Water Set—Pitcher and Six Tumblers, \$5.50 per set.
- Cut Glass Baskets, \$2.40 each.
- Cut Glass Candy Jars, \$2.50 each.
- Cut Glass Candlesticks, \$5.00 pair.
- Decorated Candlesticks, \$4.95 pair.
- Cut Glass Butter Tubs, 52c. each.

BRASS.

- Brass Jardinieres, \$3.00 each.
- Brass Jardinieres, \$3.60 each.
- Brass Candlesticks, \$2.80 pair.
- Brass Tea Caddies, \$2.60 each.
- Brass Ash Trays—Golf Design, 60c. each.
- Brass Ash Trays—Military Badges \$1.00 each.
- Brass Match Holders, \$1.00 each.

- Electro Plated Casserole Dishes, round, \$4.00 each.
- Electro Plated Casserole Dishes, round, \$4.40 each.
- Electro Plated Pie Plates, oval, \$4.30 each.
- Electro Plated Pie Plates, Pyrex Lin-ling, \$3.25 each.
- Electro Plated Pie Plates, Gurnsey Lin-ling, \$3.00 each.
- Electro Plated Tea Strainers, \$1.85 each.
- Electro Plated Medium Knives, Primrose Pattern, \$2.75 per 1/2 doz.
- Electro Plated Medium Knives, Primrose Pattern, \$2.70 per 1/2 doz.
- Electro Plated Medium Forks, Primrose Pattern, \$2.10 per 1/2 doz.
- Electro Plated Dessert Forks, Primrose Pattern, \$1.95 per 1/2 doz.
- Electro Plated Table Spoons, Primrose Pattern, \$2.10 per 1/2 doz.
- Electro Plated Soup Spoons, Primrose Pattern, \$2.10 per 1/2 doz.
- Electro Plated Dessert Spoons, Primrose Pattern, \$1.95 per 1/2 doz.
- Electro Plated Tea Spoons, Primrose Pattern, \$1.80 per 1/2 doz.
- Electro Plated Sugar Spoons, Primrose Pattern, 50c. each.
- Electro Plated Sugar Tongs, Primrose Pattern, 85c. each.
- Electro Plated Cold Meat Fork, Primrose Pattern, 75c. each.
- Electro Plated Berry Spoons, Primrose Pattern, \$1.10 each.
- Electro Plated Cream Ladle, Primrose Pattern, 75c. each.
- Electro Plated Gravy Ladle, Primrose Pattern, 85c. each.
- Electro Plated Bouillon Spoons, Primrose Pattern, \$2.30 per 1/2 doz.
- Electro Plated Table Spoons, Exeter Pattern, \$3.88 per 1/2 doz.
- Electro Plated Dessert Spoons, Exeter Pattern, \$3.59 per 1/2 doz.
- Electro Plated Soup Spoons, Exeter Pattern, \$3.88 per 1/2 doz.
- Electro Plated Sugar Spoons, Exeter Pattern, 75c. each.
- English Stainless Steel Medium Knives, \$7.80 per 1/2 doz.
- English Stainless Steel Dessert Knives, \$7.00 per 1/2 doz.
- 8-Piece Carving Sets, \$3.60 each.
- Case Carvers, 3 piece, \$3.10 each.

MISCELLANEOUS.

- Gem Safety Razors, \$1.00 each.
- Gillette Safety Razors, 75c. each.

- Auto-Strop Razors, 75c. each.
- Steel Scissors, 6 in., 42c. pair.
- Steel Scissors, 7 in., 45c. pair.
- Steel Scissors, 8 in., 50c. pair.
- English China Cups and Saucers, \$1.10 each.
- Glass Bottom Trays, \$1.60 and \$2.00 each.
- Mahogany Candlesticks, \$1.00 pair.
- Leather Collar Bags, \$1.50 and \$2.00 each.
- Paper and Envelopes, 85c. per box.
- Leather Hand Bags, \$2.25 and \$3.40 each.
- Flasks, \$2.00 each.
- Alarm Clocks, \$1.49 each.

PAINT AND GLASS DEPARTMENT.

- Athena Paint—Ready to use and extra good value, mixed in pure oil.
- 1 lb., Regular 18c.; Dollar Day, 15c.
- 2 lb., Regular 36c.; Dollar Day, 30c.
- 1/2 gal., Regular \$1.00; Dollar Day, 80c.
- 1/4 gal., Regular \$1.80; Dollar Day, \$1.50.
- 1 gal., Regular \$3.35; Dollar Day, \$2.80.
- Alabastine—Is the lasting, sanitary and economical wall coating, in 21 selected tints, in 2 & 4 lb. and 8 lb. sizes.
- 3 1/2 lbs., Regular 40c.; Dollar Day, 30c.
- 8 lbs., Regular 75c.; Dollar Day 60c.
- Floor Polish—A polished wax surface has always been considered the perfection in finish of hardwood floor.
- Butcher, Old English and Johnston—1 and 2 lbs. tins.
- 1 lb. tin, Regular \$1.00; Dollar Day, 85c.
- 2 lb. tins, Regular \$2.00; Dollar Day, \$1.70.
- Takof and Lingerwet — A remover that cuts rapidly, and works while other removers sleep.
- 1-16 gal., Regular 40c.; Dollar Day, 35c.
- 1-8 gal., Regular 65c.; Dollar Day, 55c.
- 1/4 gal., Regular \$1.15; Dollar Day, \$1.05.
- 1/2 gal., Regular \$2.20; Dollar Day, \$2.00.
- 1 gal., Regular \$4.10; Dollar Day, \$3.75.
- Japalac—Varnish and Stain. Combined they produce double results, with one application. Easy to apply and dries with a high gloss.

W. H. THORNE & CO., LIMITED