

Printing a Slide Show

You can print your slide show in several ways. The default is to print the entire slide show with each slide on one full sheet of paper. If this is not what you want to do, use the Print to [Printer] dialog box, shown in Figure 5-5, to select different options, such as those described in Table 5-3.

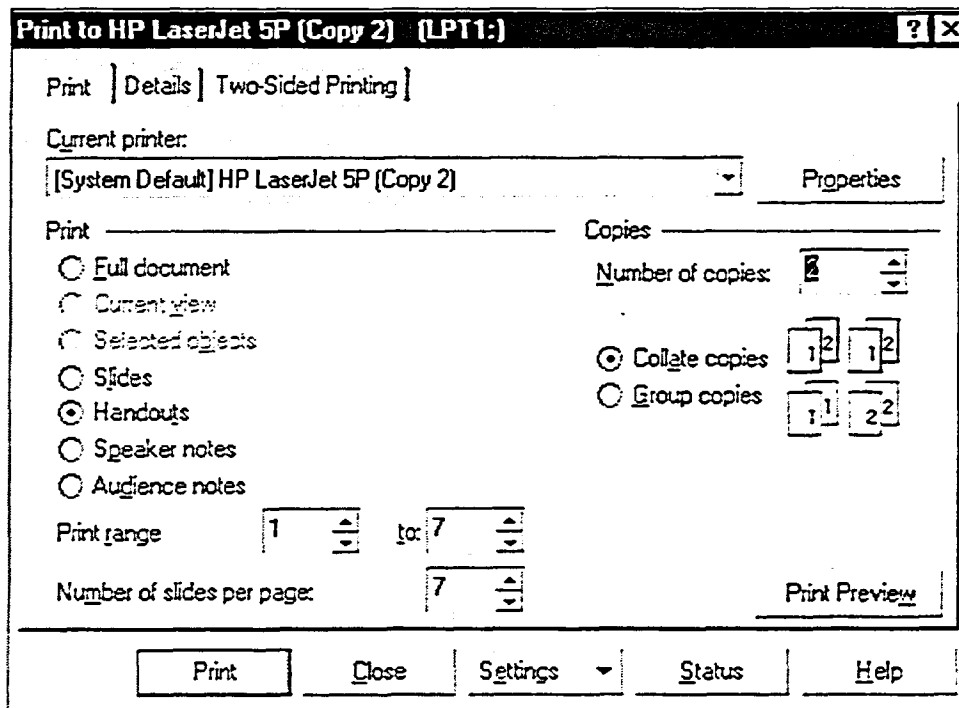


Figure 5-5: The Print Page of the Print to [Printer] Dialog Box

Output	Description
Full document	Prints all pages in the slide show.
Current view	Prints the selected slide.
Handouts	Prints two or more slides on a sheet, conserving paper.
Audience Notes	Prints slides on the sheet with blank lines next to them on which audience members can write notes.
Speaker Notes	Prints slides on the sheet with associated speaker notes.

Table 5-3: Types of Printed Output