

CA1
EA522
C11
v.1 #2
Aug. 1991
DOCS

Canadian
Participation
EXPO '92
Seville, Spain

Participation
canadienne
EXPO '92
Séville, Espagne

Participación
canadiense
EXPO '92
Sevilla, España

Canada at Expo '92

Dept. of External Affairs
Ministère des Affaires extérieures
AUG 12 1992
RETURN TO DEPARTMENTAL LIBRARY
RETOURNER A LA BIBLIOTHEQUE DU MINISTERE

LIBRARY E A/BIBLIOTHEQUE A E
3 5036 20044499 3

VOL. 1, NO. 2 — AUGUST 1991

Canada Pavilion Reaches Skyward

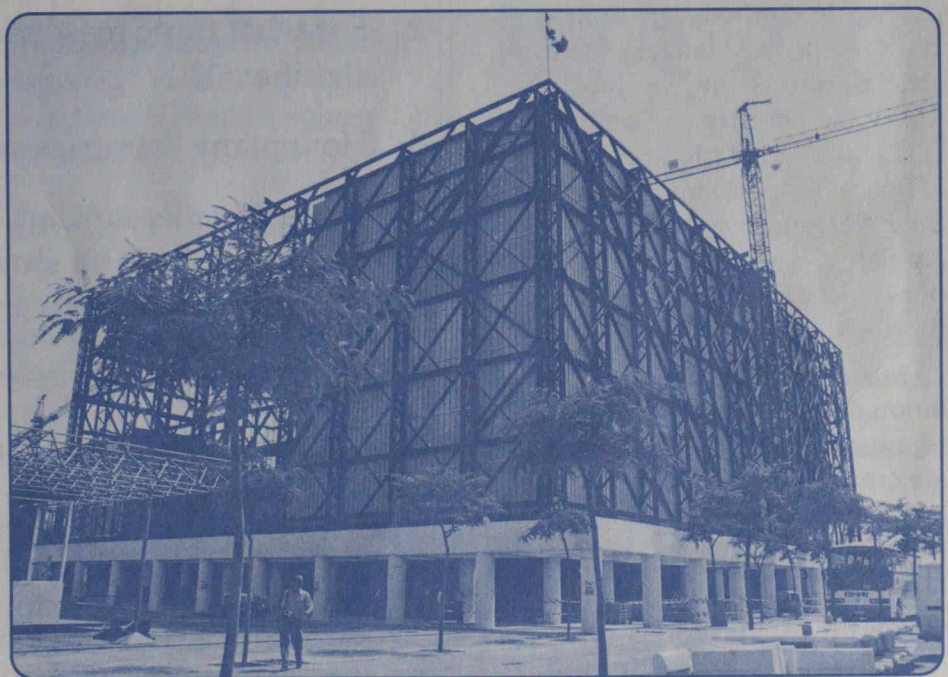
Concept nears reality as construction and related activities continue on four fronts

The basic structure for the Canada Pavilion stands completed on the site of the Universal Exposition of Seville '92.

Structural steel rises 27.5 metres high while under its framework groups of construction workers and trades people are busy with flooring, drywall, plastering, plumbing, carpentry, installation, and electrical work.

Activities related to the Canada Pavilion are proceeding on four fronts:

- Construction of the building.
- Exhibit areas featuring interactive displays run by the Federal, British Columbia, Ontario and Quebec governments.
- A restaurant/arts and crafts boutique and souvenir outlet managed by the Northwest Territories.



At Expo '92, construction on the Canada Pavilion remains the most advanced.

- A 15-minute IMAX film on Canada, produced by the NFB.

The pavilion will be completed in December. Adjustments to the building will be made as needed and will be ready for inspection and approval by Expo '92 authorities in the new year. As for the exhibits and restaurant, they will be phased in from January 1 to March 31, 1992.

An inspection of the Canada Pavilion was made on July 13 by the Minister of Industry, Science, Technology Canada and Minister for International Trade, The Honourable Michael H. Wilson.

Mr. Wilson and his party walked under the completed colonnade that flanks two sides of the pavilion, past the outer screen wall and into the courtyard. From there the party proceeded to the exhibit area.

Mr. Wilson also saw the administration offices and VIP lounge areas. The Minister took ceremonial delivery of the first zinc sheet which will be used to clad 3,200 square metres of the pavilion walls. The sheets are each one metre square. The zinc

*Continued on page 2 —
Preparations at Home*

**DO YOU KNOW
EXPO**



**Pursue Expo Trivia
on Page 3**