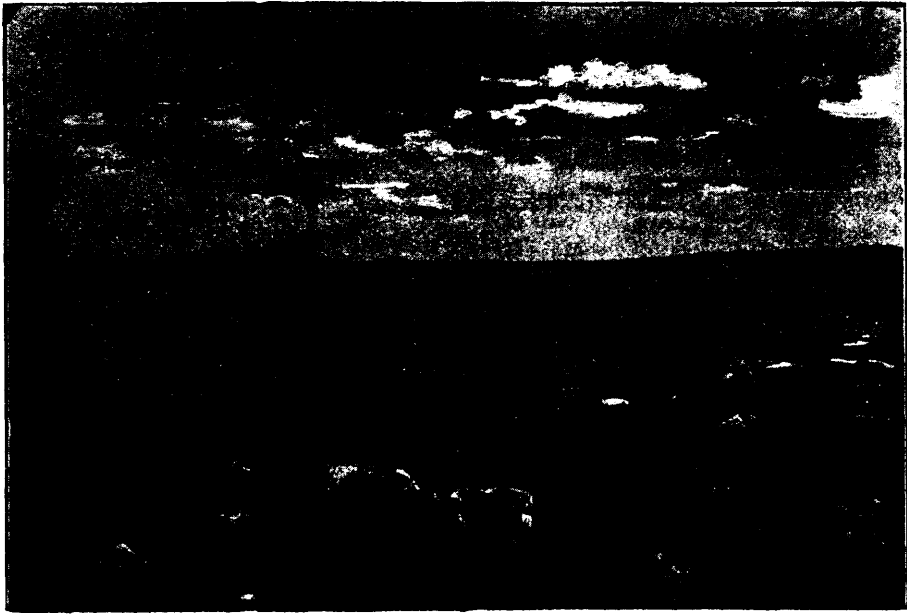


*grum*), which grow in great abundance along the east coast of James' Bay.

In winter, the cattle at posts on the Bay are fed on marsh hay, cut and brought in on boats in July and August. At East Main there were thirty Indians cutting and bringing it in.

When some of our party took a standing jump over an old grindstone in the yard, the Indians advanced with the intention of jumping over, too, but silently turned away. Evidently they had never seen much in the athletic line. Some of our party

torted by giving us a piece of oratory in Cree. Our dog Jack contributed not a little to the entertainment. He insisted on entering all races and high jump contests, and even sat up and barked when Johnnie was spouting. The Indian dogs were fearfully jealous of him, and wished they could do tricks, too. It tickled the Indians greatly to see the dog sit up to beg—mayhap to bark if the promised bribe was not forthcoming—and the Indian boys delighted themselves sending him into the water for sticks, or to



LAKE MISTASSINI, FROM NEAR DISCHARGE.

gave an exhibition, including high and broad jumps, hop-step-and-jump, vaulting with and without a pole, jumping into a barrel and out again, skipping, rolling barrels, short races, and three-legged races. Don't tell me an Indian never laughs. Those fellows laughed as if they would kill themselves. Each of the "Big Seven" contributed something, and Johnnie wound up the proceedings by mounting an inverted barrel, and giving an election harangue in French. One of the Indians, not to be outdone, re-

dive for stones.

Leaving East Main, we started a survey of the coast, intending to go as far as the Paint Hills, but heavy gales prevented our doing so. For two days we were kept on shore, not daring to venture out. Along the coast, strawberries, wild currants, dwarf blueberries, and crowberries are plentiful.

One peculiarity of the Indians we met along the east coast was their exceeding shyness. They never came into camp without bringing some smoked fish or a few berries as a pre-