

Havergal Ladies' College

TORONTO

Residential and Day School for Girls and
Young Ladies.

Re-opens 12th Sept.

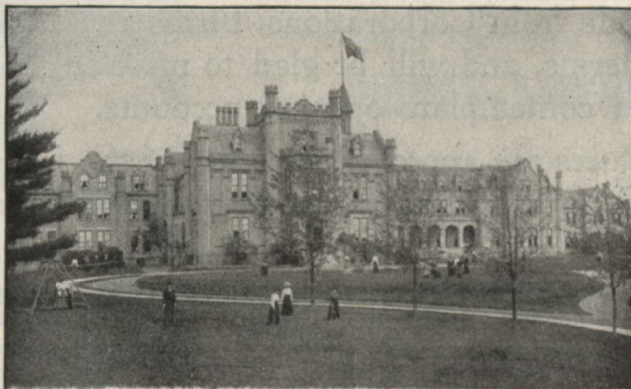
For prospectus please apply to

MISS KNOX,
Principal.

The Ontario Ladies' College

Trafalgar
Castle

**WHITBY,
ONT.**



and Conservatory of Music

Ideally located in the beautiful collegiate town in close proximity to Toronto. Buildings, grounds and equipment unequalled by those of any similar college in Canada.

**The College will
Re-Open
Thursday, 5th Sept.**

Send for new Illustrated
Calendar to

Rev. J. J. Hare, Ph.D.,
Principal.

Hon. G. A. Cox,
President



ONTARIO'S MINING LANDS.

The Crown domain of the Province of Ontario contains an area of over 85,000,000 acres, a large part of which is comprised in geological formations known to carry valuable minerals and extending northward from the great lakes and westward from the Ottawa river to the Manitoba boundary.

Iron in large bodies of magnetite and hematite; copper in sulphide and native form; gold, mostly in free-milling quartz; silver, native and sulphide; zincblende, galena, pyrites, mica, graphite, talc, marl, brick clay, building stones of all kinds and other useful minerals have been found in many places, and are being worked at the present time.

In the famous Sudbury region Ontario possesses one of the two sources of the world's supply of nickel, and the known deposits of this metal are very large. Recent discoveries of corundum in Eastern Ontario are believed to be the most extensive in existence.

The output of iron, copper and nickel in 1900 was much beyond that of any previous year, and large developments in these industries are now going on.

In the older parts of the Province salt, petroleum and natural gas are important products.

The mining laws of Ontario are liberal, and the prices of mineral lands low. Title by freehold or lease, on working conditions for seven years. There are no royalties.

The climate is unsurpassed, wood and water are plentiful, and in the summer season the prospector can go almost anywhere in a canoe. The Canadian Pacific Railway runs through the entire mineral belt.

For reports of the Bureau of Mines, maps, mining laws, etc., apply to

HON. E. J. DAVIS,

Commissioner of Crown Lands.

Or

THOS. W. GIBSON,

Director Bureau of Mines, Toronto, Ontario.