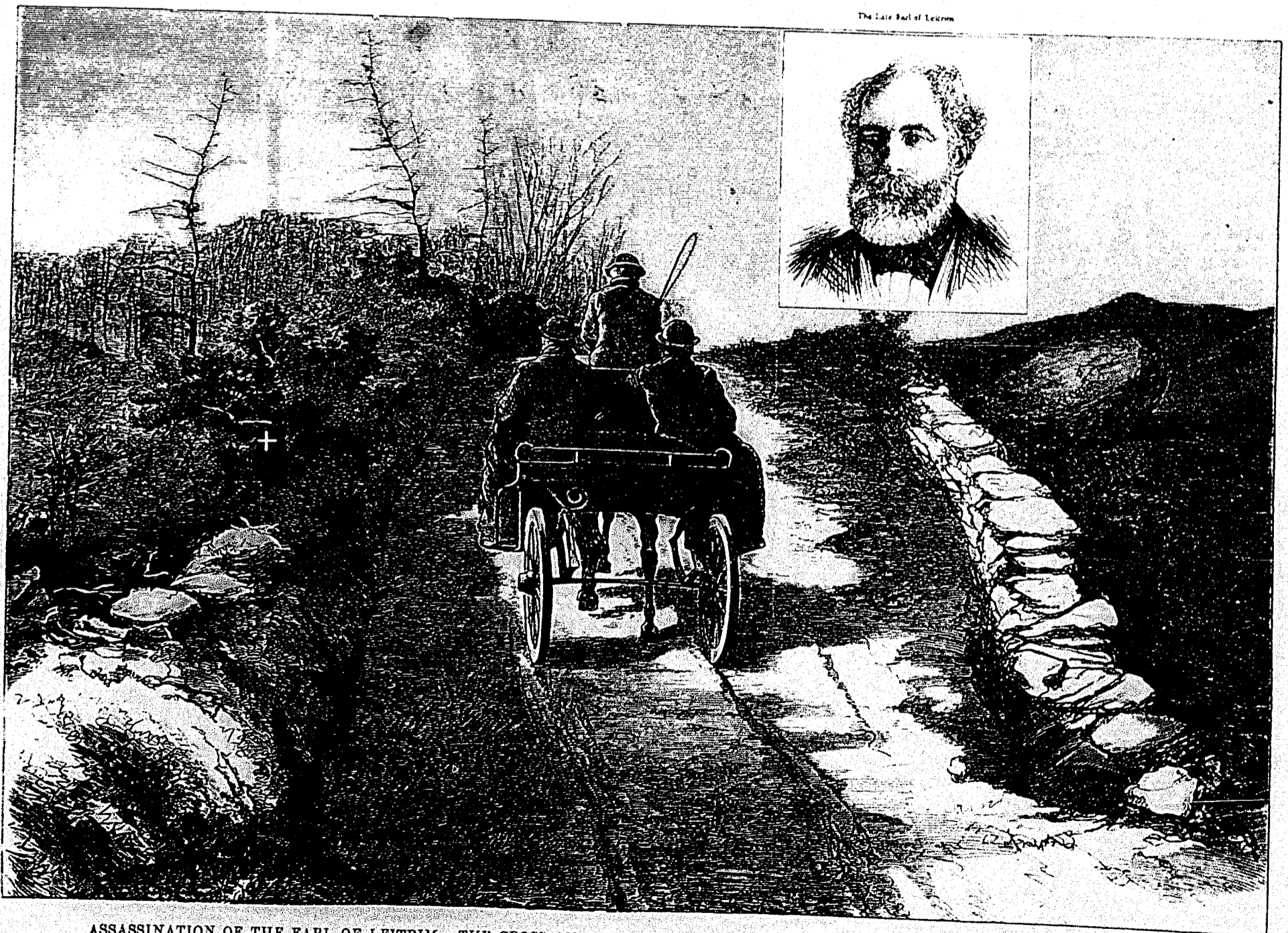




THE INSURRECTION IN THESSALY. VIEW OF VOLO WITH MOUNT PELION IN THE BACKGROUND.



The Late Earl of Leitrim

ASSASSINATION OF THE EARL OF LEITRIM. THE CROSS ON THE LEFT MARKS THE SPOT IN THE HEDGE FROM WHICH HE WAS SHOT.