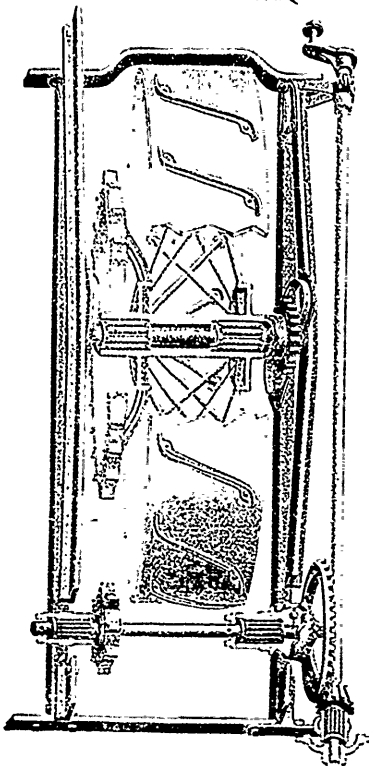


# THE Massey-Harris Wide-Open BINDER



SECTIONAL VIEW WITH PARTS BROKEN AWAY AND SHOWING THE "PERFECTED" BEARINGS IN THE MAIN DRIVING GEAR

Is fitted with Massey-Harris PERFECTED ROLLER and BALL BEARINGS, which reduce friction to a minimum, and by preventing wear add years to the life of the Binder.

Note how they . . . are placed in the . . . Main Driving Gear.

The horses are glad when they are hitched to a MASSEY-HARRIS BINDER - IT RUNS SO EASILY.

## Massey-Harris

CO., LIMITED

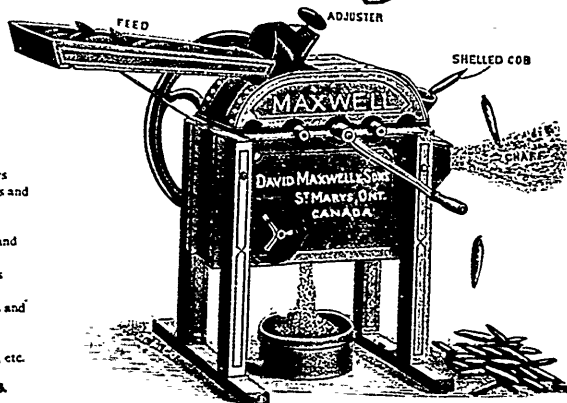
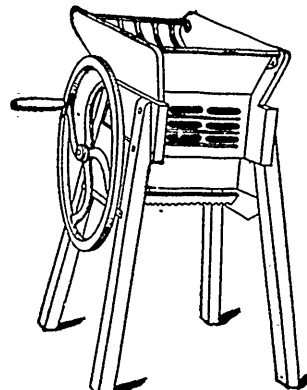
TORONTO

# David Maxwell & Sons

ST. MARYS, ONT., CAN.

Manufacturers of

## High Grade Farm Implements



- Binders
- Reapers
- Mowers
- Hay Rakes
- Hay Loaders
- Hay Tedders
- Disc Harrow
- Scufflers
- Turnip Sowers
- Turnip Slicers and Pulpers
- Cider Mills
- Hand Straw and Corn Cutters
- Lawn Mowers
- Churns
- Wheelbarrows and Corn Shellers
- Iron Jacks
- Riding Plows, etc.

Agents wanted in all unoccupied territory.

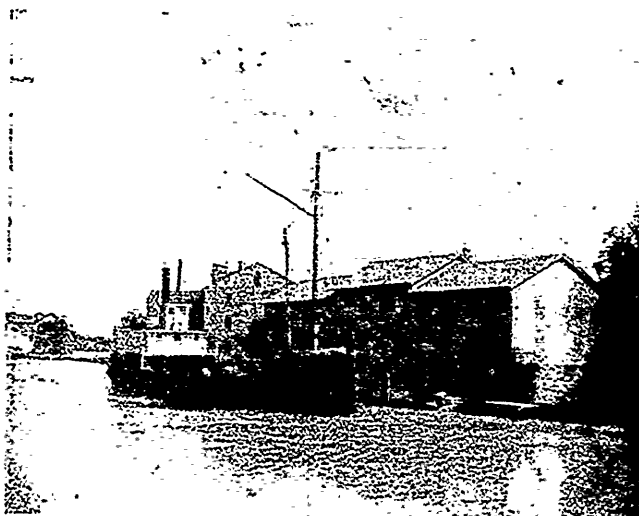
Send for Catalogue.

# THE Thorold Cement

High in Quality  
Low in Price

56 Years in use.

The Leading Cement for Building Bank Barns, Cement Floors in Stables, Silos, Culverts, Pig Pens, etc.



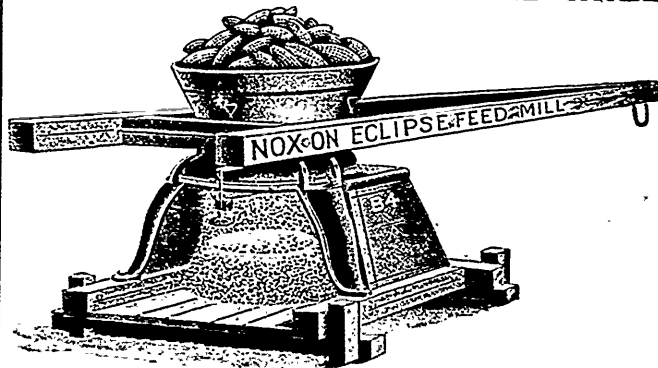
Steamer "Iona" loading 3,000 barrels THOROLD CEMENT for the Dominion Government, to be used on the Soulanges Canal.

Has been tested in every capacity. Most perfect Cement made. For full particulars address

## ESTATE OF JOHN BATTLE,

THOROLD, ONTARIO.

# THE NOXON ECLIPSE FEED MILL



For one or two horses. Mill and Power all in one machine. The most perfect Mill yet invented. Grinds corn in the cob as well as all kinds of grain. Will grind from six to eighteen bushels per hour according to kind and condition of grain.

NOXON BROS. MFG. CO. LIMITED, - INCERSOLL, ONT.

# LAND For Everybody

Free Grants of Government Land  
Cheap Railway Lands for Sale on Easy Terms

GOOD SOIL      PURE WATER      AMPLE FUEL

THE construction of the Calgary and Edmonton Railway, and the Qu'Appelle, Long Lake, and Saskatchewan Railway, has opened up for settlement two new districts of magnificent farming land, viz. that between the North and South Saskatchewan Rivers, and that between Calgary and Red Deer. Full information concerning these districts, maps, pamphlets, etc., free. Apply to

OSLER, HAMMOND & NANTON,  
Land Office, 381 Main St., WINNIPEG.

Calgary and Edmonton Ry., Qu'Appelle, Long Lake and Saskatchewan Railway Company.