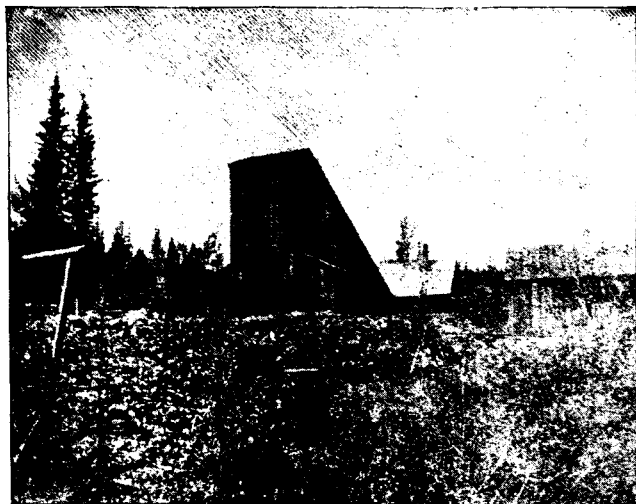


On the Shannon and Dolphin work was confined to tracing the ledge which runs through the Bellevue (Sailor company's) and on down through the Maple Leaf, Alice and Emma (Cariboo company's). Several shafts were sunk and the ledge was stripped in two or three places, but so far has evidently not been found in place, except towards the east end. The ore



The Kamloops Shaft House.

is a coarse-grained white quartz carrying massive plates of pyrites, but these sulphides do not seem to carry much values. There are also several other veins on these properties.

On the Alma and Pendray free gold has been found in a weathered bluish quartz. The vein, which has an easterly and westerly strike, has been opened up by a series of small shafts and a contract has been let for a 75-foot shaft on the Alma.

The other claims on this hill are being developed by their owners, and the showings so far are decidedly encouraging.

Coming east again, the Wiarton mine, adjoining the Cariboo company's properties, is owned by the Camp McKinney Development Company of Spokane. While there may be strong reasons for the assumption that the continuation of the Cariboo vein will be found through the Wiarton ground, the fact has not yet been demonstrated finally by development to date, as the vein has not been found in place. About 300 feet from the side line of the Saw Tooth a shaft was sunk to a depth of 52 feet and a cross-cut run south from here for 65 feet. A second shaft was sunk near the Waterloo to a depth of 54 feet and a cross-cut 40 feet north was run without encountering ore. About 200 feet south of this working a third shaft was sunk on a vein of bluish-white quartz carrying some sulphides. This shaft is 60 feet deep, and the vein on which it was sunk has been traced by open cuts for at least 400 feet in a westerly direction.

Adjoining the Wiarton on the east lies the Waterloo mine owned by the Waterloo Mining and Milling Company, of Spokane. The property was located in the spring of 1897, the surface ore affording very fine specimens of free gold, occurring as plates in a dark blue coarse-grained quartz. Preliminary work consisted of a shaft near the west end of the property sunk to a depth of 46 feet. The ledge was then stripped towards the east and about 300 feet away a second shaft was sunk on a cropping of quartz containing

free gold. This one was put down, 80 feet and at the 60-foot level drifts were run 40 feet in an easterly and 260 feet in a westerly direction.

Last autumn a stamp mill was erected and after a month's run a brick to the value of \$2,000 was produced. Owing to the cutting off of the water supply last winter by frost the mill, after a second clean up of \$600 had been made, was temporarily inactive. Stopping was, however, commenced in the mine, and an upraise 180 feet west of the present shaft was started. This upraise when completed will be utilized as a main shaft and will, as soon as a more powerful hoist is obtained, be continued on down through the pay chute. The present equipment consists of a 30 h.p. vertical boiler, a small hoist and a No. 5 Cameron pump supplied by the Jenckes Machine Co. A new 10x10 hoist and a steam drill are, I believe, to be installed when the new shaft is completed. The stamp mill consists of one 5-stamp battery, a 50 h.p. boiler and 40 h.p. engine, Johnstone concentrator and Blake crusher. In building the mill, the ore bins, battery blocks and the concentrator floor were all constructed with a view to enlarging the mill, hence the capacity of the battery can be increased to the stamps with very little trouble or expense. The tramway between the shaft and mill is approximately 280 feet long. The new shaft will be about the same distance away and ore bins are to be built near the shaft and a good supply of ore therefore may always be kept in reserve. The vein is about four feet wide, has a strike W. five degrees N. and is almost vertical. The ore is a dark



The Sailor Hoist.

blue coarse-looking quartz carrying heavy bands of sulphides (pyrites, blend and galena). The average values, according to the superintendent, Mr. Graham's last report was \$15 per ton, \$12 of which is saved on the plates. The result of the last mill run was \$1.480, and when the capacity of the battery is