

## Facts about Guelph

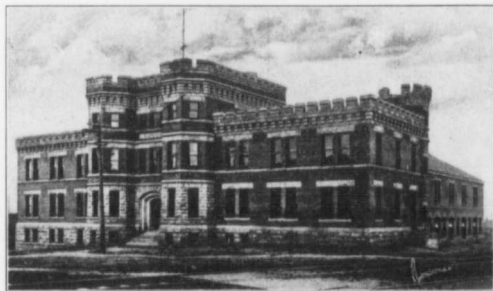
- GUELPH was founded in 1827; created a city in 1879.
- GUELPH is the County Town of the County of Wellington, and the seat of the Ontario Agricultural College and of the Ontario Provincial Winter Fair.
- GUELPH is visited annually by over 100,000 farmers—a valuable publicity factor.
- GUELPH has over 90 prosperous factories. It is a noted centre for grey iron castings; the only linen mill in Canada is located here.



E. CARTER,  
Mayor of Guelph.

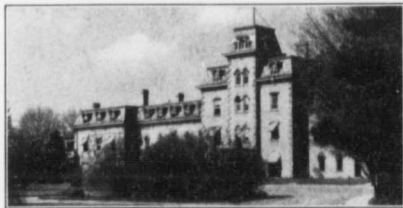
## Facts about Guelph

- GUELPH is served by the trunk line of the Grand Trunk Railway and by the Canadian Pacific Railway. There are seven branch lines.
- GUELPH is famous as a health resort—1,143 feet above sea level.
- GREATER GUELPH has a population of over 20,000.
- GUELPH has a very active Chamber of Commerce.



The Armouries at Guelph—Headquarters of the 30th Infantry Regiment, the 1st Howitzer Brigade and the 16th Battery.

Guelph Chamber of Commerce extends a hearty invitation to manufacturers and business men to investigate the opportunities in the Royal City.



The Ontario Agricultural College—Boys' Residence.

Write for our illustrated booklet with full details of our city, illustrations of our buildings and parks, and complete list of our manufactures.

**Address: The Chairman of Railway and Manufacturers' Committee, City Council, Guelph**