

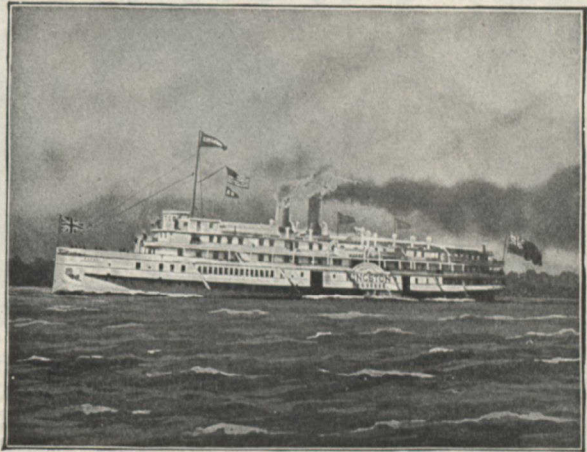
RICHELIEU AND ONTARIO NAVIGATION COMPANY

AMERICA'S UNRIVALLED SCENIC LINE

Niagara
to
the
Sea

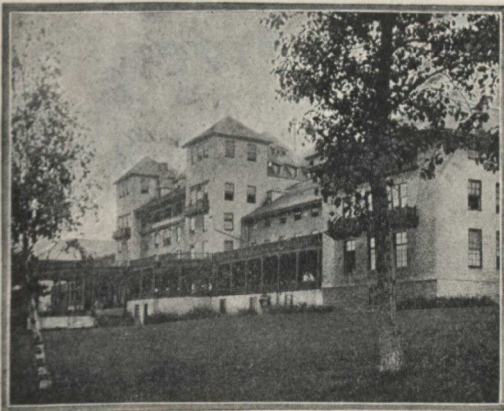
The
Mag-
nificent
New
Steamers

"TORONTO" AND
"KINGSTON"



STEAMER "KINGSTON"

LEAVE TORONTO FOR



MANOIR RICHELIEU, MURRAY BAY, P.Q.

Rochester Kingston
Clayton

**1,000 Island
Ports**

Passing through the Picturesque Scenery of the
1,000 Islands, and making the descent of all the
MARVELLOUS RAPIDS to

**Montreal
Quebec**

Murray Bay and Tadousac

thence up the far-famed

Saguenay River

HOTELS—MANOIR RICHELIEU, Murray Bay, P.Q.
HOTEL TADOUSAC, Tadousac, P.Q.

Two charmingly situated summer hotels owned and operated by this Company
and up-to-date in every particular

For further particulars
apply to

THOS. HENRY, Traffic Manager, MONTREAL

"WE DELIGHT IN GIVING INFORMATION"