

MUNICIPAL ENGINEERS, CONTRACTORS AND MATERIALS

WILLIS CHIPMAN

Hon. Grad. McGill University.
C. Can. Soc. C.E. M. Am. Soc. C.E.
Mem. Am. W.W. Ass'n.

WATERWORKS, SEWERAGE WORKS, GAS
WORKS, ELECTRIC LIGHT AND
POWER PLANTS
Reports, Surveys, Construction, Valuations
103 BAY STREET - TORONTO

RODERICK J. PARKE

Consulting Electrical Engineer

MUNICIPAL ELECTRIC LIGHTING
COMMERCIAL POWER INSTALLATIONS

Electrical Lighting and Power Plants for
Manufactories, Estimates, Specifications, Advice
to Lenders, Valuating
310 Temple Building - TORONTO, CANADA

W. T. ASHBRIDGE, C.E.

A. M. CAN. Soc. C.E.

609 Temple Building, - TORONTO

Special Attention given to

MUNICIPAL IMPROVEMENTS

Sewerage Works, Water Supply,
Pavements. Concrete Construction, Etc.

J. EMILE VANIER

CIVIL AND HYDRAULIC ENGINEER

(Graduate of the Polytechnic School.)

IMPERIAL BUILDING, MONTREAL

SPECIALTIES

Waterworks, Sewers, both Steam and Hydraulic
Power Plants, Foundations, Paving, etc.
Valuations made of Waterworks Systems, Arbi-
trations, etc.
Plans and Estimates for Public Buildings.

Please mention the CONTRACT RECORD
when corresponding with advertisers.

ST. LAWRENCE FOUNDRY CO. ESTD 1852
OF TORONTO, LIMITED.

ARCHITECTURAL IRON & STEEL WORKS

FORGINGS & CASTINGS

CAST IRON GAS, WATER & SEWER PIPES,
SPIKES & BOLTS,
PATTERNS & MODELS.

262 TO 268 FRONT ST. EAST. TORONTO.

WATER CRANES

INDICATOR VALVE POST
FOOT AND CHECK VALVES

INDICATOR AND
GATE VALVES

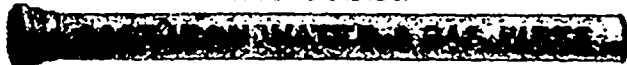
2-3 & 4 WAY HYDRANTS

Montreal Pipe Foundry Co. Ltd.

SUCCESSORS TO

DRUMMOND, McCALL PIPE FOUNDRY CO. LTD

MANUFACTURERS OF



SPECIAL CASTINGS
FLANGE PIPE
BRANCHES
HYDRANTS
VALVES
VALVE BOXES

Offices
CANADA LIFE BUILDING

MONTREAL

LONDONDERRY PIPE FOUNDRY

Cast Iron Water and Gas Pipes, etc.

Londonderry, Nova Scotia

Notice to Contractors

WE can save you money on.....

Granolithic or Crushed Stone

of any size, as we have the most complete plant in
Canada. You will consult your own interests by getting
our prices. We also make a specialty of Slate, Tile,
granite and all kinds of Stone. Crusher at Jarvis
street wharf

THE POWELL GRANITE & MARBLE CO'Y,
Phone 3440. Office, 482-484 Yonge St., Toronto

PORTLAND CEMENT

For Sidewalks, Pavements, Heavy Masonry and Concrete.

MANUFACTURED BY . . .

Write for Circular
and Prices.

The Rathbun Company

DESERONTO, ONT.

ALEX. GARTSHORE, President. J. G. ALLAN, Secretary and Treasurer. JAS. THOMSON, Vice-President and General Manager.

THE GARTSHORE-THOMSON PIPE & FOUNDRY CO. LIMITED.

Manufacturers of:::

Flexible and Flange Pipe,
Special Castings and all kinds of
Waterworks Supplies.



3 inches to 60 inches diameter.

For Water, Gas, Culvert and Sewer

HAMILTON ONT.