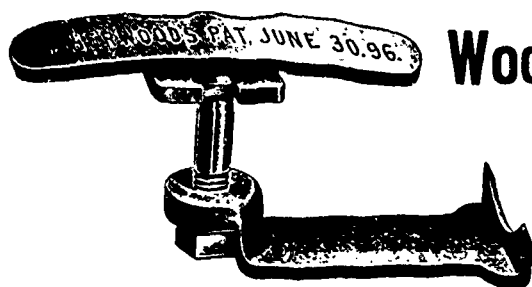


JOHN SHAMBOW, Treasurer.



Woonsocket Reed & Shuttle Works

WOONSOCKET, RHODE ISLAND.

Makers
of
Every
Description
of



Power Loom Shuttles

G. Root & Company

Wool and Noil Merchants
Combers
and Top Makers

Cable Address—
Roots,
Bradford.

BRADFORD, ENG.

Australian, Cape and
B. A. Wools
Tops, Noils, Wastes

AGENT:

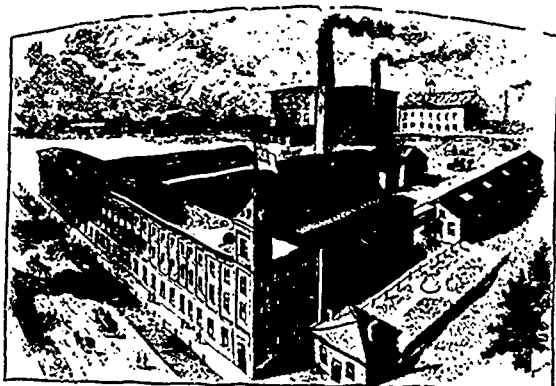
R. S. FRASER

17 LEMOINE ST., MONTREAL

Hamilton Cotton Co., Hamilton

MANUFACTURERS OF

White and Colored Yarns, Single or Double, Ho-lerly Yarns
of all descriptions, Warps, Twines, white or colored.
Webbings & Bindings in great variety, Lampwicks, etc.



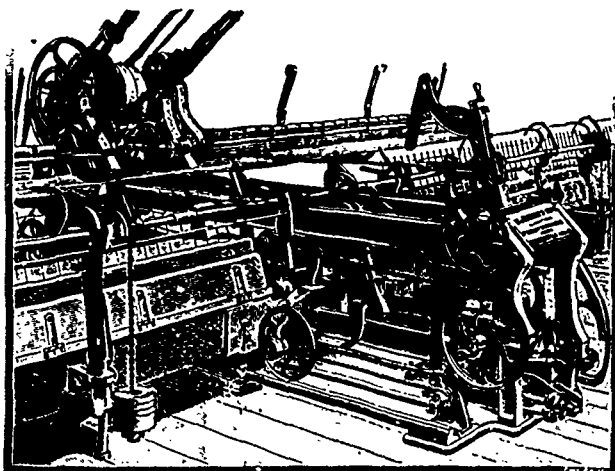
SELLING AGENTS:

WM. B. STEWART, 18 Front St. East, Toronto.

Agent for Warps: GEO. REID, 118 Duke Street, TORONTO

WILLIAM WHITELEY & SONS, Limited

LOCKWOOD, HUDDERSFIELD, ENGLAND.



Winding Machinery, Improved Self-Acting Mule, Suspended
Steam Driven Centrifugal Hydro-Extractor, Tentering and
Drying Machines, Patent Wool and Cotton Dryer, Patent Wool
Scouring Machine, Cross Raising Machine, Patent Crabbling and
Winding-on Machine, Warp Sizing, Cool Air Drying and Beam-
ing Machine, and other Woolen Machinery.

CATALOGUE ON APPLICATION

SHAW BROTHERS, - Agents

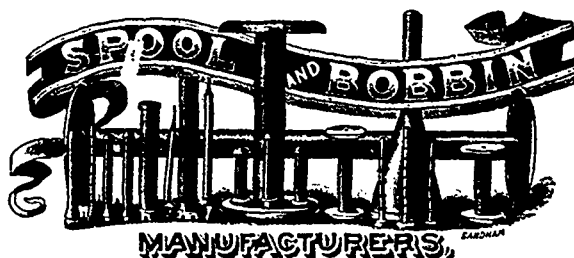
164 McGill Street, - Montreal.

THOMAS KER

J. HARCOURT

KER & HARCOURT,

ESTABLISHED 1857



MANUFACTURERS,

Orders by Mail
will receive prompt
Attention.

Parry Sound, Ont.