

## LANARK GINSENG

Fortune awaits any man who will give time and attention to the growing of Ginseng. We have made a complete success of it and are ready to point the way to others. The time to prepare the ground is now, the time to plant is September and October.

Lanark Ginseng Seed is noted for its strong germinating qualities.

Lanark Ginseng Roots are sure growers and great producers.

Don't fail to make investigation of this highly profitable industry. Write to the Secretary and he will tell you all about it.

Address **C. M. FORBES**  
Sec. Lanark Ginseng Garden Co.  
LANARK, ONT.

## BULBS

Now is your chance to get your Fall Bulbs  
**At ROCK BOTTOM PRICES**

We represent in Canada one of the largest Wholesale Bulb and Plant Growers of Holland and we are going to sell at retail better Bulbs at less than you have paid before for inferior kinds.

Send us your List and we will quote you, as we have no Retail Catalog and you do not help pay for one.

NO ORDER TOO LARGE      NO ORDER TOO SMALL  
Write To-day—NOIV

THE **GARDEN & ORCHARD SUPPLY CO.**  
637 King Street East, HAMILTON, ONT.  
Phone 3514

## Dominion Fruit Crop Conditions

The report of the Dominion Fruit Division on crop conditions under date of July 13th, stated that the June or July "drop" now being over, reports generally are not so favorable as those sent in a month ago. There is, however, a tendency on the part of growers to underestimate their crop at this time, just as they are inclined to overestimate it at the time of blossoming. In eastern Ontario the crop will equal that of last year, and in western Ontario will approach that of 1912. Nova Scotia, while suffering seriously from frost in some sections, will produce the best crop since 1911, if nothing further interferes. The crop of British Columbia will surpass that of 1913. It is therefore clear that the Canadian apple crop, from present indications, will be above average, and with proper attention given to distribution and marketing, one that will return to growers satisfactory figures.

The apple crop in southern and western Ontario and in the Niagara district will, from present indications be an excellent one. Greenings and Baldwins have been reported short in Wentworth county, but taking the western portions of the province as a whole, the yield promises to be well above the average and of good quality.

Conditions in the inland counties of Ontario correspond very closely to those in southern and western Ontario. In both districts the drop has been exceedingly heavy. Huron county reports fall varieties particularly good, with winter sorts lighter. Spies being about equal to the 1913 crop. Brant county promises to equal the 1912 yield, and prospects are almost equally favorable in Middlesex.

In the main apple-producing counties of

## Douglas Gardens

OAKVILLE, ONT.

The Rhizomatous Irises, including Pamila, Interregua and Germanica, should be planted not later than August for best results. We strongly recommend Iris Koenig, 50c each; Rhein Nixe, 50c each, Wyomissing, \$1 each, Juniata, 75c each, Mandraliscae, 25c each, Mme. Chereau, 12c each. We have five fine sorts of Pamila Hybrids, and five of the best of the Interreguas.

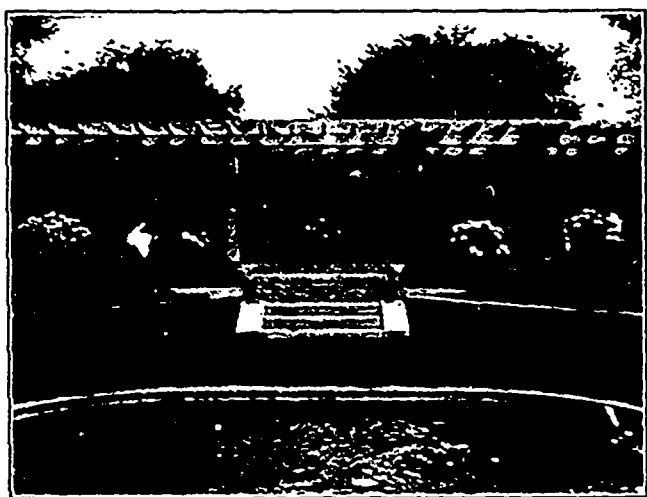
Nearly all the varieties of Peonies that we offer this year are one year plants. The other varieties will be in strong divisions. These should be planted in the latter half of September and orders should be given now.

We have a fine lot of "Miss Lingard" Phlox, Delphiniums, Aquilegias, Shasta Daisies, and other Herbaceous Perennials which are described in our fall planting list now ready for distribution. This list will be sent to all on our mailing list and to others who send their names and addresses.

**EARLY ORDERS ARE SOLICITED.**

Cash with orders, please.

**JOHN CAVERS**



**E. D. Smith & Son**  
LIMITED

NURSEYMEN  
HORTICULTURISTS

AND  
LANDSCAPE ARCHITECTS

**WINONA - ONT.**

## Every Landscape Problem Must Be Considered By Itself

In order that everything may harmonize when the work is completed, the architecture of the grounds must be handled just as carefully and with the same definite purpose as the architecture of the house. If you are building a New Home and need Planting Plans or if you wish to re-arrange what has already been done, we are at your service with Practical Suggestions.

