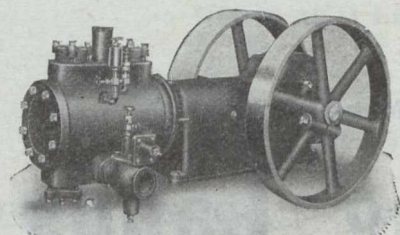
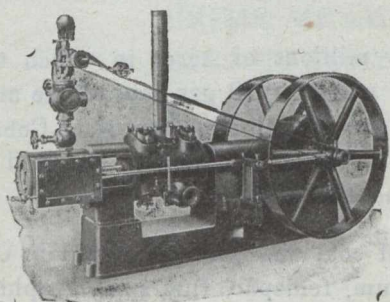


Buying Air Power at the Lowest Cost

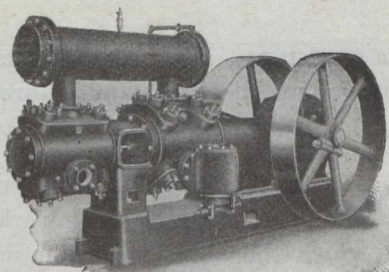
Does Not Mean Buying the Cheapest Air Compressor



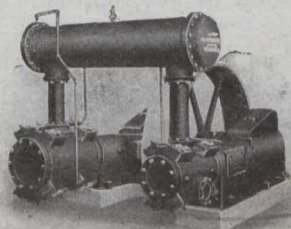
EL-1. Straight-line, Power Driven, Single Stage Compressor.



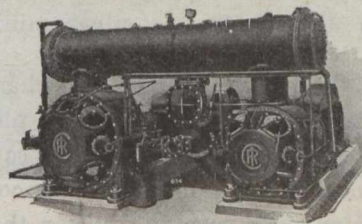
FL-1. Straight-line, Steam Driven, Single Stage Compressor.



EL-2. Straight-line Power Driven, Two Stage Compressor.



PLB-2. Cross Compound, Power Driven, Two Stage Compressor.



PRE-2. Cross Compound, Direct Connected, Electrically Driven, Two Stage Compressor.

When figured on the basis of cost per cubic foot per year, the air power you buy will cost you less if your compressor is chosen for quality rather than price.

Canadian Ingersoll-Rand Compressors are built on a quality basis throughout. Though not always the lowest in first cost, they will be found after years of highly efficient service to have cost the least—which is the real test of worth.

Reliability is an essential feature of a mine compressor as there is nothing so annoying as the unexpected cutting off of the air supply. The dirt and dustproof enclosed construction, automatic splash lubrication, and accessibility of Canadian Ingersoll-Rand Compressors is your insurance against shut-downs.

C. I. R. Co. Compressors are built in a wide range of sizes and styles for every duty and all classes of service, and may be depended upon to last for a life time of maintained efficiency.

Our nearest branch will be glad to send you the latest compressor bulletins.

Canadian Ingersoll-Rand Company, Ltd.

Sydney

Sherbrooke
Winnipeg

Montreal
Nelson

Toronto
Vancouver

Cobalt