

OATS

OATS

OATS

SHIP your OATS to

G. B. MURPHY & CO.

and obtain HIGHEST PRICES, also prompt settlements.

214 GRAIN EXCHANGE, WINNIPEG, MAN.

Prices reasonable and terms easy.

REFERENCES: EASTERN TOWNSHIPS AND UNION BANKS.



\$60

ROUND TRIP

ALL NORTH PACIFIC

COAST CITIES

On sale June 1st to September 15th
Limit October 31st, 1906

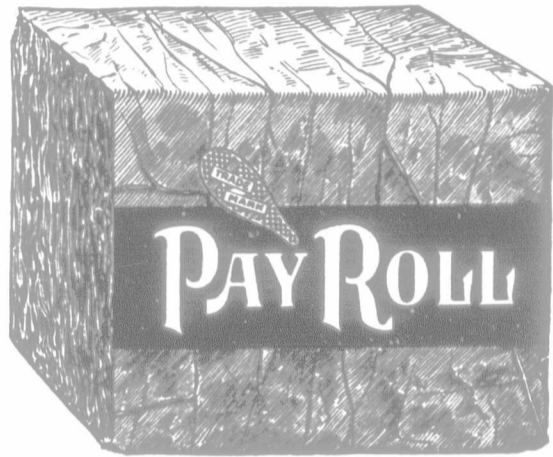
STOPOVERS

TOURIST RATES TO ALL SUMMER RESORTS
FROM JUNE 1st

FAST FREIGHT LINE

Route all your freight care Northern Pacific
at St. Paul or Duluth.

H. SWINFORD, General Agent
R. CREELMAN, Ticket Agent
341 MAIN STREET, WINNIPEG



Bright Plug Chewing TOBACCO

10c. per Cut.

LAND BARGAINS

WE OWN

10,000 acres in Saskatchewan to sell on the crop payment plan Prices \$8.00 to \$25.
40,000 acres in Alberta, personally selected, to sell by section or block. Prices \$6 1/2 to \$10.
Improved Farms. The best in Saskatchewan.
Don't Delay in Writing for Information

G. M. ANNABLE & CO., MOOSE JAW, SASK.

WE BUY FURS SKUNK MINK GOON
and all other kinds. Top market prices and quick cash returns. Trappers Guide Free to those who ship and mention this ad.
McMILLAN FUR & WOOL CO.
MINNEAPOLIS, MINN.
WRITE FOR CIRCULARS

TOWN OF NANTON

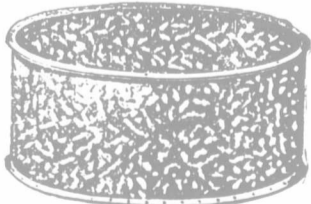
Southern Alberta on the Line of C. P. R.
Daily service. Fifty seven miles south of Calgary. If you want to buy Beautiful Town Site Lots, Choice Farming Lands, and get in on the ground floor in the very best section, write to us promptly, as the opportunities to get some of these choice lands are daily growing less. It will pay you to come and select for yourself. We will give you a square and honest deal, and place you on the road to success.

McPHAIL & McINTYRE.

Through Tourist Car Service to California.

Via Chicago, Great Western Railway. Cars leave Minneapolis and St. Paul on four days of the week—Monday, Tuesday, Wednesday, and Thursday. For full information apply to J. P. Elmer, G. P. A., St. Paul, Minn.

STEEL TANKS FOR ALL PURPOSES.



Corrugated and Plain.
Galvanized Steel Tanks.
Portable Grain Tanks.

RED RIVER METAL CO.
51 & 53 Aikins St. Winnipeg

THE NEW
NORTH-WESTERN LIMITED
ELECTRIC LIGHTED

THE MOST COMFORTABLE
Convenient, Unique and Beautiful
Trains ever placed in service between
Minneapolis, St. Paul and Chicago.

ONE OF THE MANY FEATURES
is the Longer Berths in Sleepers,
several inches longer than the usual
standard.

COMFORT EVERYWHERE

GEO. A. LEE, General Agent,
215 McDermott Ave. Phone 1924
WINNIPEG.

"FAVORITE" CHURN



In 8 sizes, churning from 1/2 to 30 gallons
Improved Steel Frame Patent Foot and Lever Drive

Patent Steel Roller Bearings

Easy to operate. Bolts throughout in place of wood screws. Superior in workmanship and finish. No other just as good. Accept no substitute. If not sold by your dealer write direct to us.

DAVID MAXWELL & SONS
St. Mary's, Ont.

NOTICE RE

Kootenay Fruit Lands

For about a week we were forced to withdraw all advertising of these lands as the rush of buyers was taxing our representatives in the Kootenay to the limit. We are now prepared to handle even a larger number of purchasers.

Beautiful Illustrated Book Sent Free.

The FISHER HAMILTON CO.
Dept. D.
615 Ashdown Building, WINNIPEG
P.O. Box 374

PIANOS & ORGANS

Highest grades only.
Prices reasonable and easy.

J. MURPHY & COMPANY
CORNWALL ST. REGINA.

THE FARMER'S ADVOCATE

\$1.50 A YEAR

Office—14-16 Princess Street

Winnipeg, - Manitoba.