

of the windows, or a low type is placed in front of the broad ledge or sill, but not projecting above it. In older buildings it is common to find circu-

in this way without interfering with the architectural effect to any great extent.

This arrangement is not usually ne-

rance. Even in cases of this kind it is often possible to bank the heating surface at each side of the entrance, and by supplying a generous amount

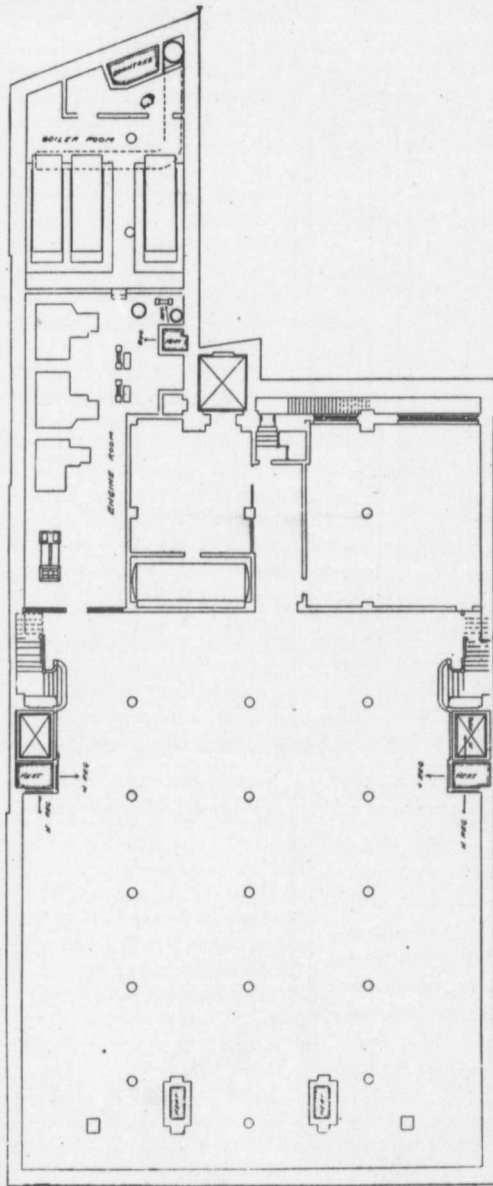


FIG. 1.—BASEMENT FLOOR.

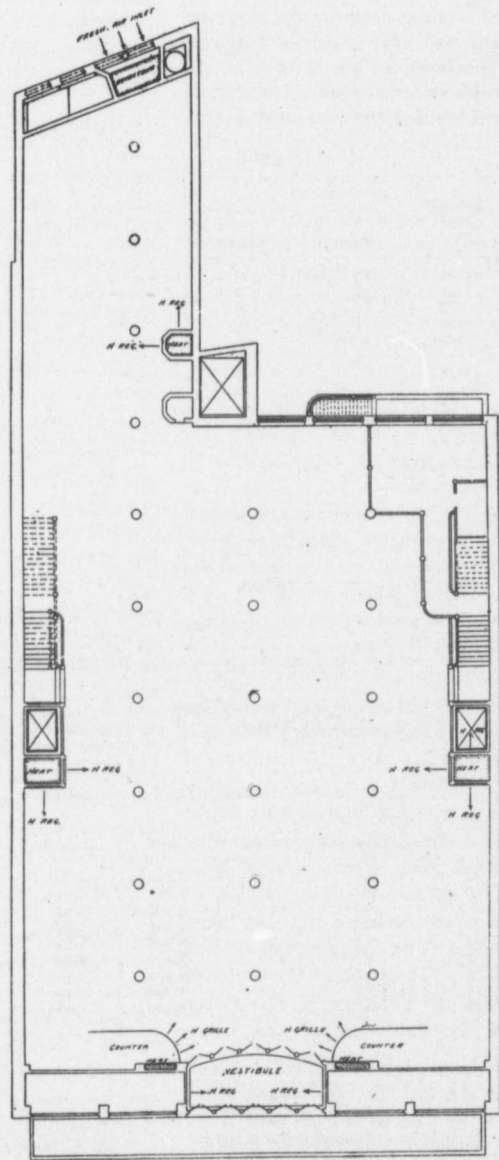


FIG. 3.—MAIN FLOOR.

lation coils along the walls and also supported upon counter fronts. This gives an unsightly appearance, although the cast iron wall radiator may sometimes be used to advantage

necessary except in the case of counters which are carried across in front of an entrance or for a short distance along the fronts of the counters, forming a central aisle in front of an ent-

of radiation in the vestibule to offset the effects of cold drafts through the doors. The cooling effect of skylights or of large windows starting at some distance above the floor is best over-