

The Robert Simpson Company, Limited



Much Value for the Price in Men's Tweed Suits at \$10.00

We have secured for Tuesday's selling two attractive lines of men's suits, one an English tweed, stripe design, in a good shade of brown, and the other a worsted-finished tweed, in dark gray, showing a narrow stripe design; the style is a smart single-breasted, three-button one, that is right in every detail of cut and finish; linings are strong, good wearing mohairs, and the workmanship is of the best. Price 10.00

Men's Tweed Waterproofs

The Popular Tweed Waterproof Coats come in two good colors—a plain gray and a light plain brown; cut single-breasted style, to button to the chin, with close-fitting collar; guaranteed to be absolutely waterproof; best tailoring. 15.00

Men's Cravenette Raincoats

Made from plain dark gray English cravenette cloth; they will protect you from the ordinary shower, and at the same time are useful as light weight overcoats; cut 50 inches long, with single-breasted fly front; lined throughout; best workmanship; an ideal garment. 15.00 (Main Floor)

1000 Men's Soft Hats

Fine imported English and Italian manufacture, samples, rough finish, in grays, greens, browns, tan, and bronze. Regular \$1.50 and \$2.00. Tuesday79

Men's Fur Caps, wedge and driver shapes, in Astrachan lamb, electric seal, nutria beaver and piece Persian, well lined and finished. Regular \$3.50 to \$5.00. Tuesday 2.75

Men's German Otter Fur Collars, No. 1 skins, and extra well finished, large full shape. Regular \$6.00. Tuesday 3.75 (Main Floor)

Neglige Shirts 59c

2000 Men's Neglige Shirts, all clean merchandise; designs are of neat hairline stripes, mostly black and blue on a white ground; the material is a strong cord cloth, with small cuffs, ordinary fronts; made coat style; we will also include in this lot several shirts with a separate soft collar to match, in plain white and pearl gray; all sizes in these lines. Regularly 75c, \$1.00, \$1.25 and \$1.50. To clear, Tuesday59

"PEN-ANGLE" BRAND FLEECE UNDERWEAR.

500 garments, shirts and drawers; the shirt has a double-breast and back, and the drawers have a double seat, fawn shade, pure wool, sanitary fleece; all sizes 34 to 44. Tuesday, a garment65

150 ONLY \$4.00 SWEATER COATS, \$2.98.

In navy, with maroon only; a very strong coat in the plain weave, high Varsity shape collar, two extra strong pockets, strong button holes and good quality pearl buttons; get one of these Tuesday; sizes 36 to 42. Regularly \$4.00, for 2.98 (Main Floor)

Items in the Great February Carpet Sale

English Tapestry Squares

show big reductions from regular prices. In this lot there are several different qualities and a splendid selection of colors and designs; all goods from the best English manufacturers.

- 10.6x13.6. Special February Sale price 12.50
- 10.6x12.2. Special February Sale price 9.75 and 11.25
- 9.0x12.0. Special February Sale price 7.25, 8.50, 9.50
- 9.0x10.6. Special February Sale price 6.50 and 7.25
- 9.0x 9.0. Special February Sale price 5.50 and 6.25

Three Thousand Yards of New Napier and String Mattings

Some of these are actually a half-price. For runners and stairs these are very useful and inexpensive. They come in self green, green with tan stripe border, tan centre and striped border, tan with red striped border, and several other colors, all marked down to be cleared during the February Sale.

- 18 inches wide, regularly 21c, sale price, 14c. Regularly 20c, special price, per yard 13
- 22 1/2 inches wide, regularly 26c, sale price, 17c. Regularly 25c, special sale price, per yard 16
- 27 inches wide, regularly 28c, sale price, per yard 18. Regularly 30c per yard, special sale price, per yard 15

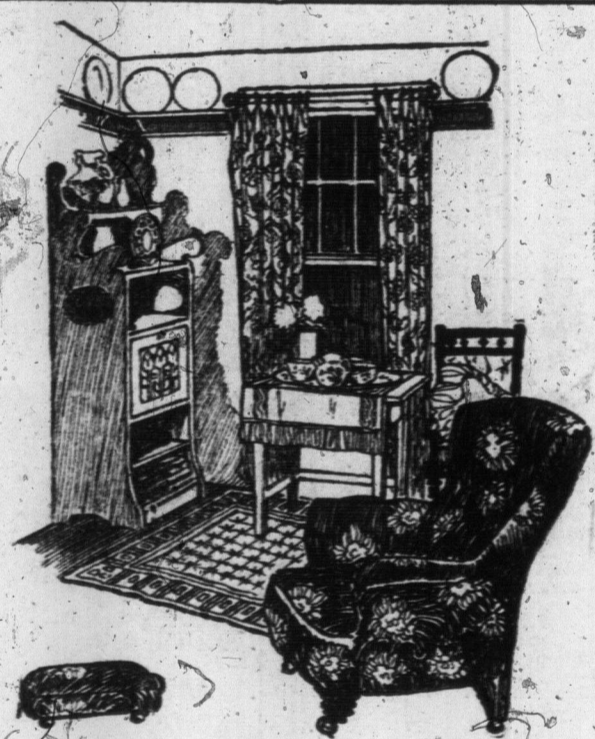
SIX DOZEN SMYRNA HEARTH RUGS.

In two sizes only, mostly handsome Oriental designs:

- 30x60 inches, February Sale price 2.25
- 26x48 inches, February Sale price 1.65

ENGLISH TAPESTRY CARPET AT 49c.

A good selection of Oriental designs, in green, tan, and red, as well as green chintz floral. This is an unusually well assorted lot and big value at February Sale price, per yard 49 (Fourth Floor)



Some of the Multitude of Rare Drapery Offerings

CURTAIN NETS. Pretty, lacy designs on very fine net, large mesh and fish net with stripe and figured designs, a wonderful collection. Regular value 40c to 45c. Tuesday, 25c

YARDS AND YARDS OF ENGLISH BLOCK PRINTED LINENS AND TAFETAS, \$2.00 AND \$2.50 VALUE, 96c.

This buying meant clearing out an English manufacturer's complete stock. It means a big saving to You who want Slip-covers, Hangings for windows and doors, in bedrooms, living-rooms, dining-rooms or library. Some of the coming season's new designs are amongst the lot, 50 and 52 inches wide. Tuesday's Special88

THE PRICES OF LACE CURTAINS.

\$4.00, \$4.50 and \$5.50 Curtains, Tuesday, \$2.95 pair. Beautiful Irish Point Lace Curtains, 3 and 3 1/2 yards long, floral and conventional borders, plain and spray centres applied on a very high-grade net. Special, Tuesday, pair 2.95

\$3.50 NOTTINGHAM LACE CURTAINS, \$2.18 PAIR.

Rich lacy designs, 3 and 3 1/2 yards long, a real parlor curtain, white only, about twenty different designs to select from. Tuesday, Special 2.18

45c AND 50c SCOTCH MADRAS, 34c.

We have a few lengths up to 25 yards of broken lines, regularly 45c and 50c, in cream and white, of a very high-grade Scotch Madras, 50 inches wide, to clear. Tuesday's Special Sale price 34

23c SWISS FIGURED MUSLIN, 1500 YARDS, CLEARING AT 12c YARD.

In all color combinations, soft pretty shades and dainty designs, this muslin is a winner, launders beautifully, the very thing for bed or window hangings, screen billings, etc. 36 inches wide. Tuesday, special, yard 12

50c AMERICAN TAFFETA, 36c.

New designs, a wide range of colors. This taffeta is well known for its washing and wearing qualities. 36 inches wide. Specially adapted for slip covers, bed spreads, etc. Tuesday, special, yard 36

50c MAJESTIC VOILE, 38c.

The softest and prettiest of all bedroom hangings, in delicate shades of mauve, blue, yellow, rose, green, etc. Regular value 50c. Tuesday, special, yard 38

\$8.50 NEW SCRIM CURTAINS, \$5.95.

The latest style, handsome point Arabé lace edgings and insertions on a very fine quality of scrim. Ecur only. 3 yards long. Regular value \$7.25 to \$8.50. Tuesday special 5.95

\$1.75 TAPESTRIES, \$1.19 YARD.

\$1.50 and \$1.75 English Verdure Tapestries, 50 inches wide. Specially suited to rooms and furniture that get lots of wear. The range is wide and selection made easy by attentive salesmen. Tuesday, yard 1.19

A card or phone message and our "Estimator" will call promptly and give February prices on all kinds of upholstery work.

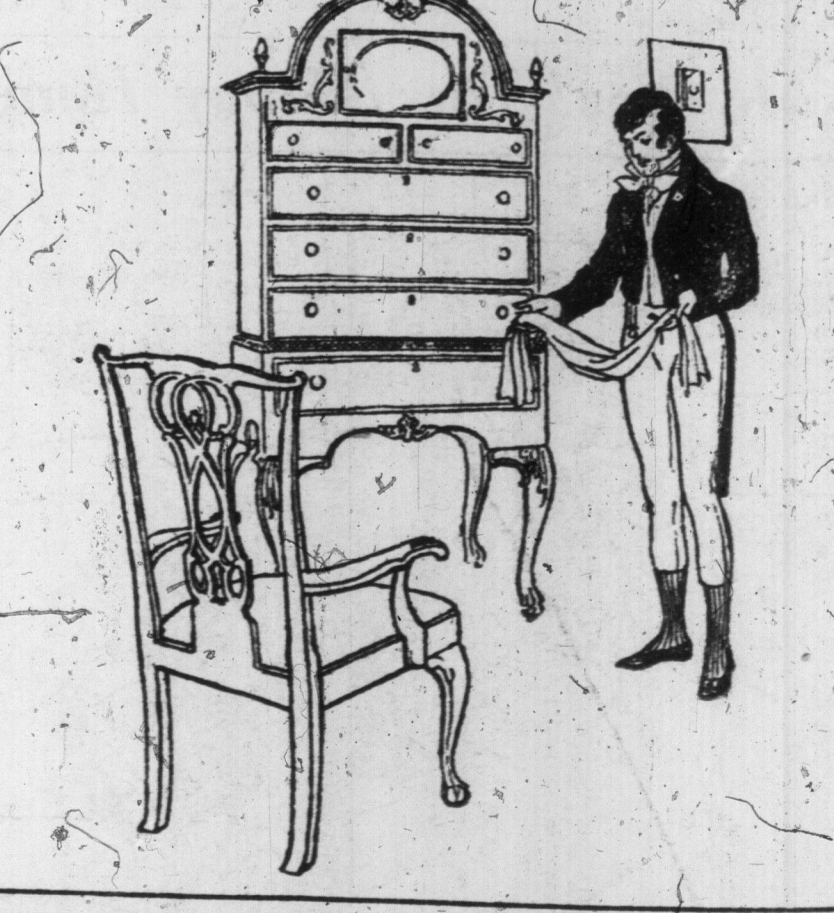
DURING FEBRUARY SALE. We upholster at half our usual prices. We hang Window Shades ordered this month "Free of charge." Made from materials now in stock. Our stock is the most complete in the city. English, French and German Tapestries, ranging in prices from 75c yard. Cotton Tapestry, \$10.00 per yard. Genuine English Wool Shade Laces and Insertions in an endless variety. —Fourth Floor.

In the February Sale of FURNITURE

Only the exceptional in price, design, material, and finish is offered in this Sale; every piece is an unusual value at its February price.

- Dressers, golden. Reg. \$12.00. February Furniture Sale 6.95
- Dressers, quartered oak. Reg. \$16.75. February Furniture Sale 12.90
- Dressers, quartered oak. Reg. \$27.00. February Furniture Sale 21.45
- Dressers, mahogany. Reg. \$52.00. February Furniture Sale 38.45
- Chestonier, quartered oak. Reg. \$19.50. February Furniture Sale 15.90
- Chestonier, mahogany. Reg. \$21.50. February Furniture Sale 17.90
- Dressing Tables, mahogany. Reg. \$12.75. February Furniture Sale 9.90
- Dressing Tables, mahogany. Reg. \$28.25. February Furniture Sale 22.25
- Brass Bed. Reg. \$18.95. February Furniture Sale 9.90
- Brass Bed. Reg. \$18.90. February Furniture Sale 14.60
- Iron Bed. Reg. \$4.75. February Furniture Sale 3.90
- Iron Bed. Reg. \$6.25. February Furniture Sale 4.80
- Mattresses. Reg. \$7.75. February Furniture Sale 5.90
- Mattresses. Reg. \$10.50. February Furniture Sale 8.45
- Buffets, golden. Reg. \$21.00. February Furniture Sale 14.00
- Buffets, figured oak. Reg. \$37.75. February Furniture Sale 28.40
- Dining Tables, golden. Reg. \$20.50. February Furniture Sale 16.40
- Dining Tables, golden. Reg. \$11.00. February Furniture Sale 8.60
- Dining Chairs, figured oak. Reg. \$28.00. February Furniture Sale 17.45
- Dining Chairs, three finishes. Reg. \$24.75. February Furniture Sale 19.75
- Parlor Suites. Reg. \$32.00. February Furniture Sale 24.50
- Parlor Suites. Reg. \$67.00. February Furniture Sale 49.75
- Parlor Chairs, mahogany. Reg. \$9.50. February Furniture Sale 7.40
- Parlor Chairs, mahogany. Reg. \$6.90. February Furniture Sale 5.30
- Library Chairs, figured. Reg. \$11.50. February Furniture Sale 9.20
- Library Chairs, figured. Reg. \$7.35. February Furniture Sale 5.00
- Library Tables, figured. Reg. \$19.50. February Furniture Sale 14.00
- Library Tables, figured. Reg. \$8.00. February Furniture Sale 6.20
- Settee, figured. Reg. \$33.50. February Furniture Sale 25.75
- Settee. Reg. \$51.00. February Furniture Sale 40.00
- Davenport. Reg. \$65.00. February Furniture Sale 50.00

—Fifth Floor.



The Robert Simpson Company, Limited