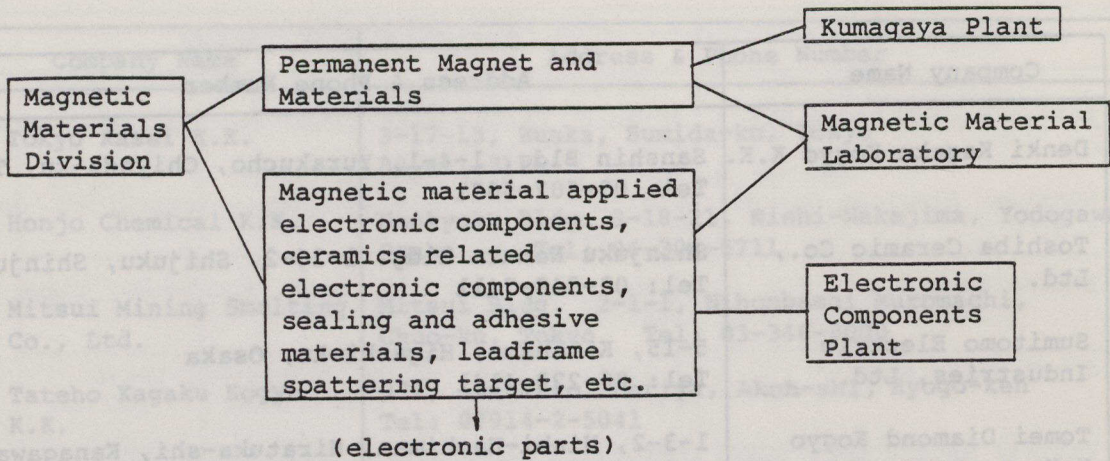


Example of Development Organization (the case of Hitachi Metals, Ltd.)

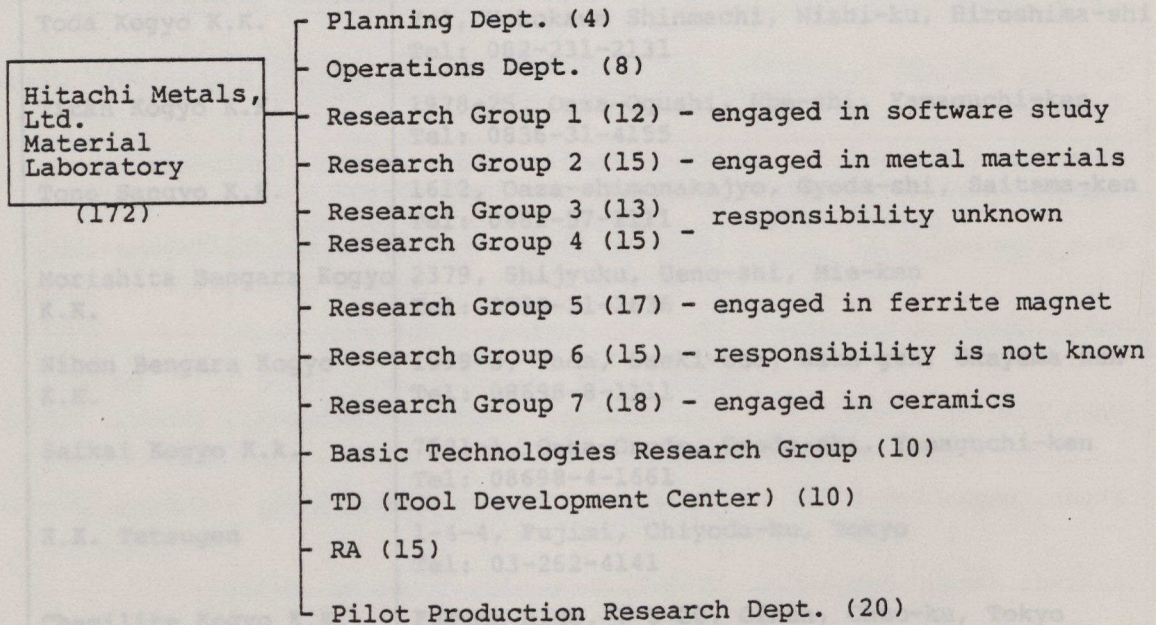


Structure of Research & Development Division

The structure of the Magnetic Material Laboratory of Hitachi Metals Ltd. is as follows.

- The present laboratory has eight research groups including the Basic Technologies Research Group.
- Research group 5 is responsible for the development of hard-ferrite.

(number of personnel in parentheses)



Ten to twenty research workers organize a specific research group.