

internal lateral ligament cut subcutaneously, the anterior portion of the foot strongly abducted and retained in position by plaster-of-Paris casing.

January 10th, 1899. Further cutting of restricting bands of fascia subcutaneously, further abduction of the feet and retention by plaster-of-Paris.

February 1st. The varus having been overcome, the tendo-

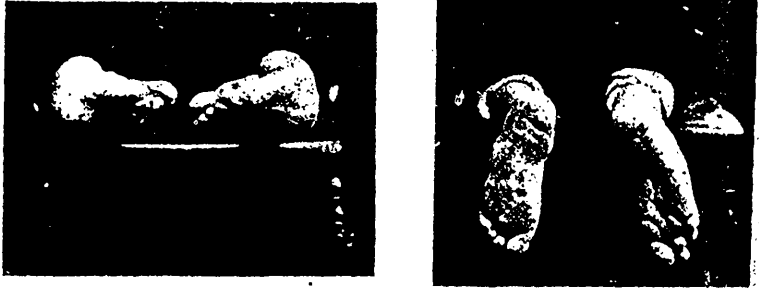


Fig. 1, Case 1.

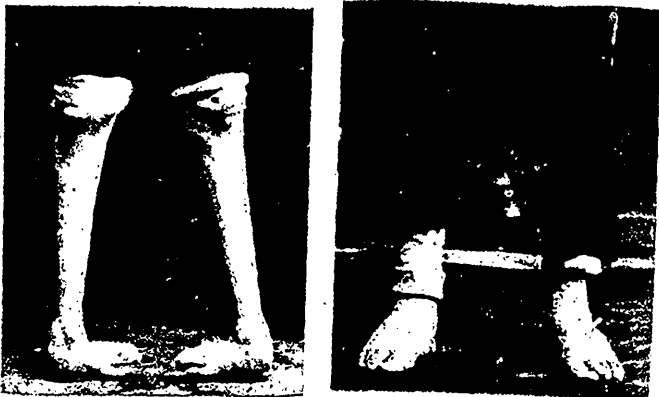


Fig. 2, Case 1.

Achillis was cut subcutaneously and the feet brought to an angle of 100 degrees and retained as before.

February 17th. Further correction made by subcutaneous cutting and manual force.

March 10th. Dismissed from hospital wearing boots and using crutches. Dorsiflexion to 80 degrees.

April, 1900. Patient walks remarkably well, remains upon his feet at business in the store all day, has, in pursuance of his occu-