

# PARIS RAIDED BY ENEMY AIR-CRAFT: 20 KILLED, 50 WOUNDED

Considerable Material Damage Was Occasioned—One German Machine Was Brought Down.

A despatch from Paris says: Twenty persons were killed and 50 wounded in Wednesday night's air raid, it is announced officially. One of the German machines which raided Paris was brought down. The occupants of the aeroplane were made prisoners.

The alarm was given at 11.30 o'clock. Bombs were thrown at various points in Paris and the suburbs. Material damage is reported. Several bombs failed to explode, but others found victims, chiefly women and children. Two hospitals were struck. Several buildings were burned or seriously damaged.

Some thirty French aeroplanes went to meet the enemy as soon as the alarm was given. Several combats occurred to the north, in which one German machine was downed. The aviators made prisoner. One French machine, in attempting to

make a landing in Paris, on account of motor trouble, fell. The pilot and the gunner were wounded.

The raid lasted for about two hours. The night was mild and clear and the moon was brilliant. The streets of the city were soon filled with crowds of curious persons, who watched the raiders and their French antagonists circling above and swooping down now and then. At intervals bursts of machine gun fire were heard.

The French aeroplanes carried bright lights, so that the gunners manning the ground defences could distinguish them. The German aviators signalled each other with rapid flashes.

Explosions of shells and bombs continued intermittently for two hours, and then gradually died away. At two o'clock the sirens signalled that all was clear.

## BOLSHEVIKS TAKE KIEV

"Mother of Russian Cities" Captured by Lenin's Troops.

A despatch from London says: For some time past has the Bolsheviki troops, against the Ukrainians, according to a telegraph despatch from the Exchange Telegraph Petrograd, forced the Bolsheviki forces Thursday night. They captured the arsenal. The town after four shots had been

capital of the Government of the right bank of the Dnieper. It is called the "Mother of Cities," and in 1902 had about 400,000 inhabitants. Recent despatches say that the Bolsheviki, on their residence in Kiev.

## HUN SHIPS USED BY ALLIES

Between 600,000 and 700,000 Tons of Enemy Shipping Now in Allied Service.

A despatch from Washington says: Secretary Daniels, discussing the despatch from the American Navy Headquarters in France regarding commandeered German ships being used to transport American troops abroad, disclosed that between 600,000 and 700,000 tons of former enemy shipping now is actively engaged in augmenting the expeditionary forces and maintaining their supply.

The Leviathan, formerly the Vaterland, which, with other vessels, have arrived at Entente ports, is capable of carrying up to ten thousand troops in a single voyage. Mr. Daniels said, but 8,000 was considered the largest number which could be comfortably accommodated. In connection with the repair of the Leviathan, it was learned that alterations made by American engineers resulted in the increase of several knots in her speed.

## BRITISH SHIPS SUNK IN THE PAST WEEK

A despatch from London says: An increase in British shipping losses is shown in the official summary issued, which reports the destruction of nine vessels of more than 1,600 tons and six of lesser tonnage. The official statement follows: Arrivals, 2,352; sailings, 2,300; British merchantmen, 1,600 tons or over, sunk by mine or submarine, 9; under 1,600 tons, 6; fishing vessels, 1; British merchantmen unsuccessfully attacked, 8.

## 11,000,000 SOLDIERS TRANSPORTED BY SEA

A despatch from London says: The Admiralty announced that since the start of the war nine British transports had been sunk and 9,000 lives lost. During the same period 11,000,000 soldiers have been transported.

## GREAT LABOR UPEAVAL IN GERMANY WORKING CLASSES DISSATISFIED

500,000 in Berlin on Strike—Shipyards and War Factories All Affected—Authorities Are Minimizing Importance.

A despatch from London says: The political and economical situation in Germany is the leading topic everywhere.

Apparently a large part of the country is in the throes of a great labor upheaval, due to dissatisfaction by the working classes over the progress of the peace negotiations and the internal political conditions generally. Throughout the country thousands of workers are on strike, and many of the great manufacturing and industries are affected.

In Berlin alone, nearly 500,000 persons are reported on strike, and hourly those who have quit work are receiving reinforcements. Likewise in Kiel, the great shipyards centres, at the Hamburg Iron Works, and in the Rhenish Westphalian mine region workers have thrown down their tools and left their jobs.

A later despatch says: The broad features of the news filtering in on Thursday from Berlin are, first, that the strike movement undoubtedly is extending, and, second, that the German authorities are endeavoring to minimize its importance.

Thus far there has been no news regarding the decision of the Minister of the Interior, Waltraf, at his conference with Gen. von Stein, commander of the home forces, as to what attitude the Government will adopt.

Among the items of news received on Thursday are that the strike has now spread to Munich, Bavaria, where the big Mauser armament works are involved, and that some of the printing works engaged in the newspaper trade in Berlin have struck.

## Markets of the World

**Breadstuffs**  
 Toronto, Feb. 5—Manitoba wheat—No. 1 Northern, \$2.24; No. 2, do., \$2.20; No. 3, do., \$2.17; No. 4, do., \$2.14; in store Fort William, including 24c tax, Manitoba oats—No. 2 C.W., 80c; No. 3 C.W., 85c; No. 1 extra feed—No. 1, 81c; in store Fort William, American corn—No. 3 yellow, nominal; Ontario oats—No. 2 white, 89 to 90c, nominal; No. 3 do., 88 to 89c, nominal; Ontario wheat—New, No. 2 Winter, \$2.22; bush, in store Montreal, 22c; No. 2, \$2.19 to \$2.20, according to freights outside.  
 Barley—Malt, \$1.50 to \$1.52, according to freights outside.  
 Buckwheat—\$1.57 to \$1.60, according to freights outside.  
 Rye—No. 2, \$1.83 to \$1.85, according to freights outside.  
 Manitoba flour—War quality, \$11.10.  
 Toronto freights—Car lots, delivered Montreal  
 Millfeed—Car lots, delivered—Bran per ton, \$35; shorts, do., \$40; middlings, do., \$45 to \$46; good feed flour, per bag, \$3.25.  
 Hay—No. 1, per ton, \$16 to \$17; mixed, \$12 to \$13; track Toronto.  
 Straw—Car lots, per ton, \$5.50 to \$9.

**Country Produce—Wholesale**  
 Butter—Creamery, solids, per lb., 45 to 46c; prints, per lb., 46 to 46 1/2c; dairy, per lb., 35 to 37c.  
 Eggs—Fresh gathered eggs, 50 to 52c; new laid, 55c.  
 Poultry—Chickens, 26 to 28c; fowl, 23 to 25c; ducks, 23 to 24c; geese, 21 to 22c; turkeys, 28 to 30c.  
 Potatoes—Wholesalers are paying to growers and country shippers, for first-class stock, f.o.b. outside points, \$2.25 to \$2.25 for Delawares, and \$2 to \$2.10 for Ontarios.  
 Wholesalers are selling to the retail trade at the following prices:  
 Cheese—New, large, 23 to 24c; twin, 23 to 24c; extra, 24 to 25c; 25 to 26c; large twin, 26 to 26 1/2c.  
 Butter—Fresh dairy, choice, 38 to 39c; creamery prints, 45 to 46c; solids, 40 to 42c.  
 Margarine—29 to 32c.  
 Eggs—No. 1 storage, 49 to 50c; select storage, 52 to 53c.  
 Dressed poultry—Spring chickens, 28 to 30c; milk-fed chickens, 28 to 29c; fowl, 26 to 28c; turkeys, 35 to 40c; ducks, 27 to 30c; geese, 25 to 27c.  
 Live poultry—Turkeys, 20c; Spring chickens, 22 to 24c; fowl, 22 to 23c; ducks, 22 to 23c; geese, 15 to 17c.  
 Honey—Comb—Extra fine, 16 oz., \$2.50; 12 oz., \$3.00; No. 2, \$2.40 to \$2.50.  
 Strained—Tins, 2 1/2 lbs. and 5 lb., 18 to 19c per lb.; No. 1, 19c to 20c; No. 2, 18c to 19c.  
 Beans—Canadian, hand-picked, bush, \$8 to \$8.25; imported hand-picked, 8c; No. 1, 8c to 8 1/2c; No. 2, 7 1/2c to 8c; Lima, 17 to 17 1/2c.  
 Potatoes—Delawares, bag, \$2.25 to \$2.35; Ontarios, bag, \$2.10 to \$2.25.

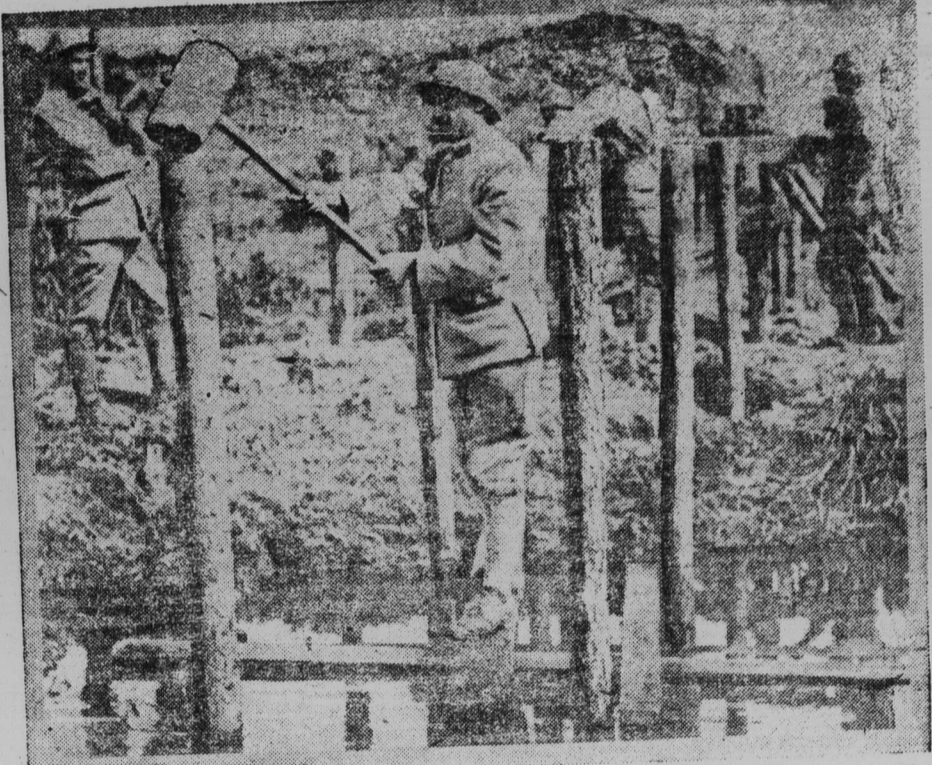
**Provisions—Wholesale**  
 Smoked meats—Hams, medium, 32 to 34c; extra, 34 to 36c; breakfast bacon, 40 to 42c; backs, plain, 43 to 44c; boneless, 45 to 46c.  
 Cured meats—Long clear ham, 28 to 29c; clear belly, 28 to 29c; corned beef, 29 to 30c; tubs, 29 to 30c; pastrami, 29 to 30c; compound, 28c; tubs, 28 1/2c; pastrami, 28c.  
**Montreal Markets**  
 Montreal, Feb. 5—Canadian western, No. 3, \$1.01 1/2 to \$1.02; extra No. 1 feed, \$1.01 1/2 to \$1.02; No. 2 local white, No. 1, 98 to 99c; No. 2, 96 to 97c; Man. Spring wheat patents, firsts, \$1.10; seconds, \$1.05; No. 3, \$1.02; No. 4, \$1.00; No. 5, \$0.98; No. 6, \$0.96; No. 7, \$0.94; No. 8, \$0.92; No. 9, \$0.90; No. 10, \$0.88; No. 11, \$0.86; No. 12, \$0.84; No. 13, \$0.82; No. 14, \$0.80; No. 15, \$0.78; No. 16, \$0.76; No. 17, \$0.74; No. 18, \$0.72; No. 19, \$0.70; No. 20, \$0.68; No. 21, \$0.66; No. 22, \$0.64; No. 23, \$0.62; No. 24, \$0.60; No. 25, \$0.58; No. 26, \$0.56; No. 27, \$0.54; No. 28, \$0.52; No. 29, \$0.50; No. 30, \$0.48; No. 31, \$0.46; No. 32, \$0.44; No. 33, \$0.42; No. 34, \$0.40; No. 35, \$0.38; No. 36, \$0.36; No. 37, \$0.34; No. 38, \$0.32; No. 39, \$0.30; No. 40, \$0.28; No. 41, \$0.26; No. 42, \$0.24; No. 43, \$0.22; No. 44, \$0.20; No. 45, \$0.18; No. 46, \$0.16; No. 47, \$0.14; No. 48, \$0.12; No. 49, \$0.10; No. 50, \$0.08; No. 51, \$0.06; No. 52, \$0.04; No. 53, \$0.02; No. 54, \$0.01; No. 55, \$0.00.  
 Flour—No. 1, \$3.50; No. 2, \$3.40; No. 3, \$3.30; No. 4, \$3.20; No. 5, \$3.10; No. 6, \$3.00; No. 7, \$2.90; No. 8, \$2.80; No. 9, \$2.70; No. 10, \$2.60; No. 11, \$2.50; No. 12, \$2.40; No. 13, \$2.30; No. 14, \$2.20; No. 15, \$2.10; No. 16, \$2.00; No. 17, \$1.90; No. 18, \$1.80; No. 19, \$1.70; No. 20, \$1.60; No. 21, \$1.50; No. 22, \$1.40; No. 23, \$1.30; No. 24, \$1.20; No. 25, \$1.10; No. 26, \$1.00; No. 27, \$0.90; No. 28, \$0.80; No. 29, \$0.70; No. 30, \$0.60; No. 31, \$0.50; No. 32, \$0.40; No. 33, \$0.30; No. 34, \$0.20; No. 35, \$0.10; No. 36, \$0.00.  
 Rolled oats—Bags, 50 lbs., \$5.20; Bran, \$3.50; Middlings, \$4.80; No. 1, \$5.00; No. 2, \$4.80; No. 3, \$4.60; No. 4, \$4.40; No. 5, \$4.20; No. 6, \$4.00; No. 7, \$3.80; No. 8, \$3.60; No. 9, \$3.40; No. 10, \$3.20; No. 11, \$3.00; No. 12, \$2.80; No. 13, \$2.60; No. 14, \$2.40; No. 15, \$2.20; No. 16, \$2.00; No. 17, \$1.80; No. 18, \$1.60; No. 19, \$1.40; No. 20, \$1.20; No. 21, \$1.00; No. 22, \$0.80; No. 23, \$0.60; No. 24, \$0.40; No. 25, \$0.20; No. 26, \$0.00.  
 Butter—Choice creamery, 47 to 47 1/2c; seconds, 46 to 46 1/2c; Eggs—No. 1, 50 to 52c; No. 2, 48 to 50c; No. 3, 46 to 48c; No. 4, 44 to 46c; No. 5, 42 to 44c; No. 6, 40 to 42c; No. 7, 38 to 40c; No. 8, 36 to 38c; No. 9, 34 to 36c; No. 10, 32 to 34c; No. 11, 30 to 32c; No. 12, 28 to 30c; No. 13, 26 to 28c; No. 14, 24 to 26c; No. 15, 22 to 24c; No. 16, 20 to 22c; No. 17, 18 to 20c; No. 18, 16 to 18c; No. 19, 14 to 16c; No. 20, 12 to 14c; No. 21, 10 to 12c; No. 22, 8 to 10c; No. 23, 6 to 8c; No. 24, 4 to 6c; No. 25, 2 to 4c; No. 26, 0 to 2c; No. 27, 0 to 1c; No. 28, 0 to 1c; No. 29, 0 to 1c; No. 30, 0 to 1c; No. 31, 0 to 1c; No. 32, 0 to 1c; No. 33, 0 to 1c; No. 34, 0 to 1c; No. 35, 0 to 1c; No. 36, 0 to 1c; No. 37, 0 to 1c; No. 38, 0 to 1c; No. 39, 0 to 1c; No. 40, 0 to 1c; No. 41, 0 to 1c; No. 42, 0 to 1c; No. 43, 0 to 1c; No. 44, 0 to 1c; No. 45, 0 to 1c; No. 46, 0 to 1c; No. 47, 0 to 1c; No. 48, 0 to 1c; No. 49, 0 to 1c; No. 50, 0 to 1c; No. 51, 0 to 1c; No. 52, 0 to 1c; No. 53, 0 to 1c; No. 54, 0 to 1c; No. 55, 0 to 1c; No. 56, 0 to 1c; No. 57, 0 to 1c; No. 58, 0 to 1c; No. 59, 0 to 1c; No. 60, 0 to 1c; No. 61, 0 to 1c; No. 62, 0 to 1c; No. 63, 0 to 1c; No. 64, 0 to 1c; No. 65, 0 to 1c; No. 66, 0 to 1c; No. 67, 0 to 1c; No. 68, 0 to 1c; No. 69, 0 to 1c; No. 70, 0 to 1c; No. 71, 0 to 1c; No. 72, 0 to 1c; No. 73, 0 to 1c; No. 74, 0 to 1c; No. 75, 0 to 1c; No. 76, 0 to 1c; No. 77, 0 to 1c; No. 78, 0 to 1c; No. 79, 0 to 1c; No. 80, 0 to 1c; No. 81, 0 to 1c; No. 82, 0 to 1c; No. 83, 0 to 1c; No. 84, 0 to 1c; No. 85, 0 to 1c; No. 86, 0 to 1c; No. 87, 0 to 1c; No. 88, 0 to 1c; No. 89, 0 to 1c; No. 90, 0 to 1c; No. 91, 0 to 1c; No. 92, 0 to 1c; No. 93, 0 to 1c; No. 94, 0 to 1c; No. 95, 0 to 1c; No. 96, 0 to 1c; No. 97, 0 to 1c; No. 98, 0 to 1c; No. 99, 0 to 1c; No. 100, 0 to 1c.  
 Per bag, car lots, \$1.00 to \$2.25.

**Winnipeg Grain**  
 Winnipeg, Feb. 5—Cash prices—Oats—No. 1, C.W., 90c; No. 2, do., 88c; No. 3, do., 86c; No. 4, do., 84c; No. 5, do., 82c; No. 6, do., 80c; No. 7, do., 78c; No. 8, do., 76c; No. 9, do., 74c; No. 10, do., 72c; No. 11, do., 70c; No. 12, do., 68c; No. 13, do., 66c; No. 14, do., 64c; No. 15, do., 62c; No. 16, do., 60c; No. 17, do., 58c; No. 18, do., 56c; No. 19, do., 54c; No. 20, do., 52c; No. 21, do., 50c; No. 22, do., 48c; No. 23, do., 46c; No. 24, do., 44c; No. 25, do., 42c; No. 26, do., 40c; No. 27, do., 38c; No. 28, do., 36c; No. 29, do., 34c; No. 30, do., 32c; No. 31, do., 30c; No. 32, do., 28c; No. 33, do., 26c; No. 34, do., 24c; No. 35, do., 22c; No. 36, do., 20c; No. 37, do., 18c; No. 38, do., 16c; No. 39, do., 14c; No. 40, do., 12c; No. 41, do., 10c; No. 42, do., 8c; No. 43, do., 6c; No. 44, do., 4c; No. 45, do., 2c; No. 46, do., 0c; No. 47, do., 0c; No. 48, do., 0c; No. 49, do., 0c; No. 50, do., 0c; No. 51, do., 0c; No. 52, do., 0c; No. 53, do., 0c; No. 54, do., 0c; No. 55, do., 0c; No. 56, do., 0c; No. 57, do., 0c; No. 58, do., 0c; No. 59, do., 0c; No. 60, do., 0c; No. 61, do., 0c; No. 62, do., 0c; No. 63, do., 0c; No. 64, do., 0c; No. 65, do., 0c; No. 66, do., 0c; No. 67, do., 0c; No. 68, do., 0c; No. 69, do., 0c; No. 70, do., 0c; No. 71, do., 0c; No. 72, do., 0c; No. 73, do., 0c; No. 74, do., 0c; No. 75, do., 0c; No. 76, do., 0c; No. 77, do., 0c; No. 78, do., 0c; No. 79, do., 0c; No. 80, do., 0c; No. 81, do., 0c; No. 82, do., 0c; No. 83, do., 0c; No. 84, do., 0c; No. 85, do., 0c; No. 86, do., 0c; No. 87, do., 0c; No. 88, do., 0c; No. 89, do., 0c; No. 90, do., 0c; No. 91, do., 0c; No. 92, do., 0c; No. 93, do., 0c; No. 94, do., 0c; No. 95, do., 0c; No. 96, do., 0c; No. 97, do., 0c; No. 98, do., 0c; No. 99, do., 0c; No. 100, do., 0c.  
 No. 1 feed, 77c; No. 2 feed, 75c; No. 3 feed, 73c; No. 4 feed, 71c; No. 5 feed, 69c; No. 6 feed, 67c; No. 7 feed, 65c; No. 8 feed, 63c; No. 9 feed, 61c; No. 10 feed, 59c; No. 11 feed, 57c; No. 12 feed, 55c; No. 13 feed, 53c; No. 14 feed, 51c; No. 15 feed, 49c; No. 16 feed, 47c; No. 17 feed, 45c; No. 18 feed, 43c; No. 19 feed, 41c; No. 20 feed, 39c; No. 21 feed, 37c; No. 22 feed, 35c; No. 23 feed, 33c; No. 24 feed, 31c; No. 25 feed, 29c; No. 26 feed, 27c; No. 27 feed, 25c; No. 28 feed, 23c; No. 29 feed, 21c; No. 30 feed, 19c; No. 31 feed, 17c; No. 32 feed, 15c; No. 33 feed, 13c; No. 34 feed, 11c; No. 35 feed, 9c; No. 36 feed, 7c; No. 37 feed, 5c; No. 38 feed, 3c; No. 39 feed, 1c; No. 40 feed, 0c; No. 41 feed, 0c; No. 42 feed, 0c; No. 43 feed, 0c; No. 44 feed, 0c; No. 45 feed, 0c; No. 46 feed, 0c; No. 47 feed, 0c; No. 48 feed, 0c; No. 49 feed, 0c; No. 50 feed, 0c; No. 51 feed, 0c; No. 52 feed, 0c; No. 53 feed, 0c; No. 54 feed, 0c; No. 55 feed, 0c; No. 56 feed, 0c; No. 57 feed, 0c; No. 58 feed, 0c; No. 59 feed, 0c; No. 60 feed, 0c; No. 61 feed, 0c; No. 62 feed, 0c; No. 63 feed, 0c; No. 64 feed, 0c; No. 65 feed, 0c; No. 66 feed, 0c; No. 67 feed, 0c; No. 68 feed, 0c; No. 69 feed, 0c; No. 70 feed, 0c; No. 71 feed, 0c; No. 72 feed, 0c; No. 73 feed, 0c; No. 74 feed, 0c; No. 75 feed, 0c; No. 76 feed, 0c; No. 77 feed, 0c; No. 78 feed, 0c; No. 79 feed, 0c; No. 80 feed, 0c; No. 81 feed, 0c; No. 82 feed, 0c; No. 83 feed, 0c; No. 84 feed, 0c; No. 85 feed, 0c; No. 86 feed, 0c; No. 87 feed, 0c; No. 88 feed, 0c; No. 89 feed, 0c; No. 90 feed, 0c; No. 91 feed, 0c; No. 92 feed, 0c; No. 93 feed, 0c; No. 94 feed, 0c; No. 95 feed, 0c; No. 96 feed, 0c; No. 97 feed, 0c; No. 98 feed, 0c; No. 99 feed, 0c; No. 100 feed, 0c.  
 No. 1 stock, 48c; No. 2 stock, 46c; No. 3 stock, 44c; No. 4 stock, 42c; No. 5 stock, 40c; No. 6 stock, 38c; No. 7 stock, 36c; No. 8 stock, 34c; No. 9 stock, 32c; No. 10 stock, 30c; No. 11 stock, 28c; No. 12 stock, 26c; No. 13 stock, 24c; No. 14 stock, 22c; No. 15 stock, 20c; No. 16 stock, 18c; No. 17 stock, 16c; No. 18 stock, 14c; No. 19 stock, 12c; No. 20 stock, 10c; No. 21 stock, 8c; No. 22 stock, 6c; No. 23 stock, 4c; No. 24 stock, 2c; No. 25 stock, 0c; No. 26 stock, 0c; No. 27 stock, 0c; No. 28 stock, 0c; No. 29 stock, 0c; No. 30 stock, 0c; No. 31 stock, 0c; No. 32 stock, 0c; No. 33 stock, 0c; No. 34 stock, 0c; No. 35 stock, 0c; No. 36 stock, 0c; No. 37 stock, 0c; No. 38 stock, 0c; No. 39 stock, 0c; No. 40 stock, 0c; No. 41 stock, 0c; No. 42 stock, 0c; No. 43 stock, 0c; No. 44 stock, 0c; No. 45 stock, 0c; No. 46 stock, 0c; No. 47 stock, 0c; No. 48 stock, 0c; No. 49 stock, 0c; No. 50 stock, 0c; No. 51 stock, 0c; No. 52 stock, 0c; No. 53 stock, 0c; No. 54 stock, 0c; No. 55 stock, 0c; No. 56 stock, 0c; No. 57 stock, 0c; No. 58 stock, 0c; No. 59 stock, 0c; No. 60 stock, 0c; No. 61 stock, 0c; No. 62 stock, 0c; No. 63 stock, 0c; No. 64 stock, 0c; No. 65 stock, 0c; No. 66 stock, 0c; No. 67 stock, 0c; No. 68 stock, 0c; No. 69 stock, 0c; No. 70 stock, 0c; No. 71 stock, 0c; No. 72 stock, 0c; No. 73 stock, 0c; No. 74 stock, 0c; No. 75 stock, 0c; No. 76 stock, 0c; No. 77 stock, 0c; No. 78 stock, 0c; No. 79 stock, 0c; No. 80 stock, 0c; No. 81 stock, 0c; No. 82 stock, 0c; No. 83 stock, 0c; No. 84 stock, 0c; No. 85 stock, 0c; No. 86 stock, 0c; No. 87 stock, 0c; No. 88 stock, 0c; No. 89 stock, 0c; No. 90 stock, 0c; No. 91 stock, 0c; No. 92 stock, 0c; No. 93 stock, 0c; No. 94 stock, 0c; No. 95 stock, 0c; No. 96 stock, 0c; No. 97 stock, 0c; No. 98 stock, 0c; No. 99 stock, 0c; No. 100 stock, 0c.  
 Per bag, car lots, \$1.00 to \$2.25.

**United States Markets**  
 Minneapolis, Feb. 5—Corn—No. 3 yellow, \$1.67 to \$1.75; No. 4 white, \$1.67 to \$1.75; Flour unchanged. Bran—\$2.50.  
 Duluth, Feb. 5—Linnseed—On track, \$2.50 to \$2.60; arrivals, \$2.54; January, \$3.54; asked; October, \$3.15 bid.

**Live Stock Markets**  
 Toronto, Feb. 5—Extra choice heavy steers, \$12 to \$12.75; do, good heavy, \$11 to \$11.75; butchers' culls, choice, \$11 to \$12; do, good, \$10.25 to \$10.75; do, medium bulks, \$7.60 to \$7.85; do, to \$10.00; do, butchers' choice, \$10 to \$10.75; do, good bulks, \$8.75 to \$9.25; do, medium bulks, \$7.60 to \$7.95; do, cows, choice, \$8.25 to \$8.85; butchers' rough bulks, \$8.75 to \$10.50; do, good, \$8.60 to \$9.25; do, medium, \$7.60 to \$8.25; choice, \$7.25 to \$8.50; feeders, \$7.25 to \$8.50; canners and cutters, \$5.50 to \$6.75; milkers, good to choice, \$8.00 to \$12.50; do, com. and med., \$6 to \$8.25; springers, \$9 to \$14.00; light ewes, \$12.50 to \$15; sheep, heavy, \$6 to \$7.25; yearlings, \$11.75 to \$12.75; lambs, \$17.50 to \$18.50; calves, good to choice, \$15 to \$18; hogs, fed and watered, \$13.75 to \$19; do, weighed off cars, \$18.75 to \$19.25; do, f.o.b., \$17.50 to \$18.  
 Montreal, Feb. 5—Choice steers, \$12; do, good, \$11 to \$11.50; do, medium, \$10 to \$10.75; choice butchers' cows, \$10.50; good cows, \$9.50 to \$10; choice butchers' bulks, \$10 to \$10.25; do, good, butchers' cattle, \$6 to \$7; sheep, \$9.50; canners' cattle, \$5 to \$7; sheep, \$12 to \$13; lambs, \$15.50 to \$18.50; milk-fed calves, \$16 to \$18; grass-fed, \$7 to \$10; choice select hogs, off cars, \$15.

**Hoecake**—One cup cornmeal, one and a half teaspoons salt and boiling water. Mix the cornmeal and salt with sufficient boiling water (about one cup) to form a stiff batter, then drop it by spoonfuls on a moderate hot griddle. Bake the cakes on both sides.



Belgians constructing a bridge in the flooded district.

## FITTING THE NAME. Enterprising Restaurant Keeps Change Name to Suit Trade.

Whenever any of our troops are sent to foreign towns unaccustomed to the sight of Tommy, it is amusing to note how the local enterprise tumbles to the occasion, says Mr. G. Hurst, of Alexandria, Egypt.

Here, in Egypt, since the opening of the war, the sudden change from usually Greek hieroglyphics over particular restaurants and bars to British titles has been astounding. We now boast small establishments designated King George the Fifth, Princess Mary, Lord Kitchener, Cardiff Arms, the Carlton, and Leicester Lounge. Near an Anzac encampment sprang up the Canberra Bar. The Overseas troops are no longer in that vicinity, however, and the proprietor has gone back to the title, New British Bar, which, it must be admitted, is more comprehensive and need not change with the change of troops.

The long sojourn here of gallant Lancashire troops, prior to their embarkation for Gallipoli, brought about Liverpool, Burnley, Manchester, and East Manchester Bars. However, the noblest effort to invigilate the humble piasre from the pockets of our lads in khaki was made by the individual who boasted over the door "Russian Restaurant," on one side "English Tea Room," and on the other "Bar Francals."

He answered to the name of Charalambo Papacopol!

## ITALIANS TAKE IMPORTANT HEIGHT 2,600 PRISONERS AND SEVERAL GUNS

Advance Line North-East of Col Del Rosso in Big Offensive on Brenta Front.

A despatch from Italian headquarters in Northern Italy, says: "The battle in the mountains, west of the Brenta River, during the past two days has been one of the most decisive since the new battle lines were formed. There have been sweeping successes for the Italians, who, after taking the important position of Monte Diaval Bella.

"The enemy was driven far back from his former front, with very heavy losses. The prisoners taken by the Italians exceed 2,500 men, and more than 100 officers, six cannon, 100 machine guns, and several thousand rifles were captured.

A later despatch from Rome says: The Italians' new position west of the Frenzela Valley on the mountain front was improved on Thursday. The line was advanced slightly north-east of Col Del Rosso.

The text of the statement reads: "In the plateau zone, on the same scene that witnessed in the last few days the brilliant deeds of the First army, our detachments kept up on Thursday their energetic thrusts south of Asiago. West of the Frenzela Valley they improved their new position, advancing all the way to the north-east of Col Del Rosso.

"Our batteries here kept their fire directed behind the enemy's line, incessantly shelling troop movements there.

## GERMANS CONTINUE TO ROB BELGIUM.

A despatch from Washington says: Robbing of Belgium and destruction of Belgian industries by the Germans continue relentlessly, according to despatches to the Belgian Legation here. Linn and mattresses are being taken from hotels, boarding-houses and convents, and the Belgians are not allowed to have wool in their possession. They are offered seaweed as a substitute for wool at five cents a pound. The big electric plant known as "L'Escalut," is said to have been stripped and its machinery placed in the German plant known as Rombacher Hutte.

## 1917 FIELD CROPS.

The First Year Canada's Crops Exceeded \$1,000,000,000.

The total yield of wheat for Canada is returned as 233,742,805 bushels from 14,755,850 acres, as compared with 202,781,000 bushels from 15,369,709 acres in 1916. Of oats the total yield is 403,009,800 bushels from 13,313,400 acres, as compared with 410,211,000 bushels from 10,996,487 acres in 1916. The yield of barley is 55,057,750 bushels from 2,392,200 acres, as against 42,770,000 bushels from 1,802,996 acres in 1916. The average yields per acre of these crops are, in bushels, as follows, the corresponding figures of