

which will cover the opening in the palate and improve articulation and deglutition.

Irregularity of the teeth also interferes with speech, particu-

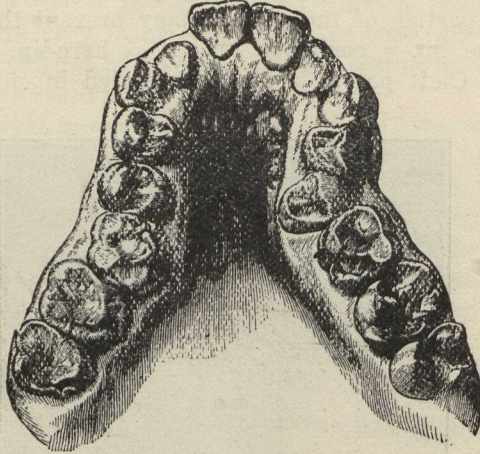


Fig. 7.—Narrow arch.

larly in those cases where the arch, or jaw, is very narrow. This narrowness of the arch is due also to lack of development of the bone. The work of correcting this condition is known as orthodontia, a science which has made rapid strides during the past

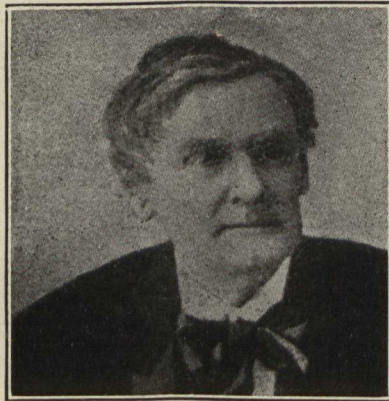


Fig. 8.—Depression of the mouth due to loss of the teeth.

ten to twenty years. In many of the large cities a few men are now devoting their whole time to orthodontia, but many dentists do more or less of it in their general practice. Irregularities of