

continues, and raw sugars especially have been subjected to a brisk movement. European advices are tame, though the stock in four ports in the United Kingdom is only 96,800 tons against 146,000 tons for the same time last year. There is nothing new concerning refined sugars on export. The market is fairly active, but shows no special measure of animation outside of the regular trade orders. Prices, however, hold steady.

MOLASSES.—Owing to the advance in molasses and the prospects of still higher prices the trade in syrup has been active, and the refineries throughout Canada are sold close up. We hear of no important transactions in molasses, but the small stock on hand is very firmly held.

TEA AND COFFEE.—Inferior to middling grades of tea are in active demand and a fair volume of trade is doing, but the fact that the stocks on hand are small has a natural tendency to restrict business. Blacks continue to advance on the other side, and representatives of English houses are unable to fill orders. The coffee market continues very firm, but no transactions of any note are reported here.

FISH OILS.—Our advices from Montreal quote as follows:—"The slight appreciation in this market continues, and the increased rates are maintained. In Newfoundland cod oil there is little doing, but values are unchanged at 38c. to 39c. in round lots, and 40c. for smaller quantities. Steam refined oil is quiet but steady at 51c. to 52½c. Cod liver oil is more enquired for, though transactions are small at 60c. for old and 65c. for new. Norway cod liver oil 85c." Gloucester, September 30.—"We quote cod oil 27c. to 30c. per gal.; medicine oil 60c.; menhaden oil 23c.; livers 30c. per bucket."

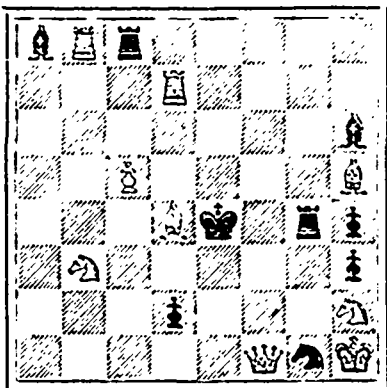
FISH.—The receipts of all kinds of fish are improving, but prices have varied little except for mackerel, which have declined about \$2 for all grades except small or "tinkers," which are about firm. Scale fish have perhaps slightly improved, while codfish remain steady at previous quotations. Our outside quotations are as below:—Montreal, September 30—"The supply to this market is small and stocks are scarce. We quote dry cod \$4.50 to \$5; Cape Breton herrings are in request at \$5.50, but stocks run short. The news from the herring fisheries does not show any signs of improvement and small takes are the rule. No. 1 shore \$4.50 to \$5.00. There is a small but steady business done in Yarmouth bladders at \$1.25 per box 60; also in St. John at \$1.25 per box of 100. Boneless cod is steady at 6½c. to 6½c. per lb., and boneless fish 4c. to 5c. New haddies are quoted at 7c. to 7½c. per lb. Fresh haddock is quoted at 3½c. to 4c. per lb. The first arrivals of Malpeque bivalves which arrived a few days since were sold at \$2 to \$3 per bbl. Choice handpicked are quoted at \$4.50. Portland oysters, which were the first on the market this season, have sold at \$3 to \$4." Gloucester, Mass., September 30—"We quote New Georges codfish at \$5.75 a qtl. for large, and small at \$4.75; now held at \$6 and \$5; Bank \$5 to \$5.25 for large, and \$4 to \$4.25 for small; Shore \$5.50 and \$4.50 for large and small; Flemish Cap \$5.25; dry bank \$5.50; medium \$4.75; French codfish \$6 per qtl.; Phillips Beach codfish \$7 per qtl.; cured cusk at \$1 per qtl.; hake \$2.62; haddock \$3; heavy salted pollock \$2.12, English-cured do. \$2.75 per qtl.; Labrador herring \$6.50; medium split \$5; Nfld. do. \$5.50; Nova Scotia do. \$5.50; Eastport \$4; split Shore \$4.25; round do. \$3.50; round Eastport \$3.25; pickled codfish \$7; haddock \$6; halibut heads \$3; sounds \$11; tongues and sounds \$9.50; tongues \$8; alewives \$3.50; trout \$13; California salmon \$15; Halifax do. \$23; Newfoundland do. \$16." Havana, Sept. 30 (by cable via New York)—"We quote codfish \$7; haddock \$6; hake \$5.50; this is a decline despite small receipts."

CHESS.

Solution of Problem 38.—Kt to B sq. Solved by C. W. L.

PROBLEM NO. 39.

By W. J. McArthur, of Peterhead, South Australia.
(Special prize as best two-mover in Melbourne Centennial Congress Problem Tourney.)
From Montreal Gazette.
BLACK 9 pieces.



WHITE 9 pieces.
White to play and mate in 2 moves.

GAME NO. 40.

Game between Herr E. Lasker of Berlin, and Mr. H. W. Trenchard of London.

The score and notes are from the London Eng., Central Times.

EVANS GAMBIT.

WHITE	BLACK
Herr E. Lasker.	Mr. H. W. Trenchard.
1 P to K4	P to K4
2 B to B4	B to B4
3 K Kt to B3	Q Kt to B3
4 P to Q Kt4	B takes Kt P
5 P to B3	B to B4
6 Castles	P to Q3
7 P to Q R4 a	Kt to B3 b
8 P to Q4	P takes P
9 P takes P	B to Kt3
10 B to Q Kt5	P to Q R3 c
11 B takes Kt sq	P takes B
12 P to R5	B to R2
13 Q to B2	B to Q2
14 P to K5	P takes P
15 B to R3	P to B4
16 P takes K P	Kt to Q1
17 R to Q1	Kt to Kt5
18 B takes Kt	P takes B
19 P to K6!	P takes P
20 Kt to K5	Castles! d
21 R takes B	Q to B3
22 Kt to K4!	Q takes R
23 Kt to R6 sq!	K to R1
24 Kt to B7 sq	R takes Kt
25 R takes R	Q takes P
26 R takes B P	B takes Kt3 o
27 R to K7	P to Kt6 f
28 R to K4	R to K B
29 Q takes K P	R takes P!
30 R to K8 sq	R to B dis sq

31 K to R	B to B4! g
32 P to R1	Q to Kt5
33 P to K3	P to Q R4
34 P to R5	R takes R
35 Q takes R sq	B to B1
36 P to R6	Q to K2!
37 P takes P sq	K takes P
38 Q to K5	Q to K8 s!
39 K to Kt2	Q takes Kt

And after a prolonged contest, Black won (h).

NOTES.

a An unusual move at this stage, and premature till White has played P to Q4.

b Mr. Trenchard thinks he ought to have played 7 * * K to R4

c The or ; move to save the piece.

d Best. The way Black conducts his game is worthy of high commendation.

e Necessary to avert the mate and free the R.

f Here we would prefer 27 * * Q to Q B4, forcing the exchange of Queens, with an easily won game.

27 * * R to K B would be met by 28 K to R.

g 31 * * Q to B4 would lose a piece!

h As interesting a game as we have seen for a long time.—The Week

MARKET QUOTATIONS.—WHOLESALE RATES.

Our Price Lists are corrected for us each week by reliable merchants.

GROCERIES.

SUGAR	
Cut Leaf	8½
Crushed	8½
White Extra C	5½ to 5½
Standard	5½ to 5½
Extra Yellow C	5½ to 5½
Yellow C	5½ to 5½
TEA	
Congou, Common	17 to 19
" Fair	20 to 22
" Good	25 to 27
" Choice	31 to 33
" Extra Choice	35 to 37
Oolong, Choice	37 to 39
MOLASSES	
Barbadoes	35 to 37
Demerara	31 to 33
Diamond N	48
Porto Rico	31 to 33
Cienfuegos	33
Timund	32 to 33
Antigua	31 to 33
Tobacco, Black	38 to 41
" Bright	42 to 58
BRISCONS	
Pilot Bread	3.15
Boston and Thin Family	6½
Soda	6½
do in lb. boxes, 50 to case	7½
Fancy	8 to 15

HOME AND FOREIGN FRUITS.

Apples, per bbl. N. S.	2.50 to 3.00
" Gravensteins	3.50 to 4.00
Oranges, new Jamaica	5.00
Lemons, per case	8.00
Cocoanuts, new, per 100	6.00
Onions, American, per lb.	3½
Dates, boxes, new	5½ to 6
Raisins, Valencia	8½ to 9
Figs, Rome, 5 lb boxes per lb, new	12 to 13
" small boxes	12 to 13
Prunes, Stewing, boxes	none
Pineapples, per doz	none
Bananas, per bunch	2.00 to 2.50

C. H. Harvey, 12 & 10 Sackville St.

FISH FROM VESSELS.

MACKEREL	
Extra	21.00 to 26.00
No. 1	22.00 to 24.00
" 2 large	20.00 to 22.00
" 2 small	18.00 to 20.00
" 3 large	17.00 to 19.00
" 3 small	16.00 to 17.00
Small	8.00
HERBING	
No. 1 Shore July	4.50 to 4.75
No. 1, August, Round	2.75 to 3.10
September	2.75 to 3.10
Labrador, in cargo lots, per bl.	none
Bay of Islands, Split	2.25 to 2.50
" Round	none
ALBANY, per lb.	3.00 to 3.25
CONPISH	
Hard Shere	4.25 to 4.50
Bank	4.00 to 4.25
Bay	4.00 to 4.25
SALMON, No. 1	18.00 to 19.00
Haddock, per qtl.	2.75 to 3.00
HARK	2.00 to 2.25
CHSK	2.00 to 2.50
POLLUCK	1.50
HARK SOUNDS, per lb.	12½
COD OIL A	25

Piso's Remedy for Catarrh is the Best, Easiest to Use and Cheapest.

CATARRH

Sold by druggists or sent by mail, 50c.
L. T. Hazeltine, Warren, Pa., U. S. A.

THE BRAS D'OR STEAM NAVIGATION COM'Y, (LIMITED.)

SUMMER ARRANGEMENTS.

On and after JUNE 9th the Large and well Furnished STEAMER

MARTON

will leave Port Mulgrave for Sydney and intermed. ports in the Bras D'Or Lakes every TUESDAY, THURSDAY, and SATURDAY on arrival of 1 C. R. train, due at 2.2. Railway time. RETURNING, will leave Sydney on MONDAY, WEDNESDAY, and FRIDAY at 2 p.m., connecting with Express Train leaving Mulgrave for the West at 10.20 Railway time.

The well known favorite Steamer NEPTUNE will leave Mulgrave for Sydney via St. Peter's Canal and East Bay on arrival of the train, DAILY, RETURNING same night, in time for Morning Train.

The beautiful Steamer MAGNOLIA will run on the Lake between WHYCOMAGH & LITTLE BRAS D'OR via BADDECK, as usual.

Tickets can be purchased at the Ticket Offices of the C. R. Railway, and all information given at office of

J. W. GORHAM & CO.

Halifax, N. S.

AGENTS.

Breadstuffs quiet, and prices on the whole slightly easier. This may be partially accountable for the fact that the trade everywhere become well supplied with breadstuffs about the last of August, and as a consequence the buyers and consumers have been well supplied. Cornmeal and oatmeal remain about steady. Western oats are rather higher if anything. P. E. Island oats will be coming in shortly and almost exclusively take the place of western oats. Personally we are bears and look for lower prices all round on almost everything.

Flour	
Manitoba Highest Grade Patents	6.40 to 6.50
High Grade Patents	5.20 to 5.75
Good 99 per cent. Patents	5.20 to 5.30
Straight Grade	5.65 to 6.10
Superior Extras	4.80 to 5.00
Good Seconds	4.60 to 4.70
Graham Flour	5.00 to 5.25
Millsbury's Best, in half bbls.	5.00
Oatmeal	4.70 to 5.00
" Rolled	5.00 to 5.15
Kilm Dried Cornmeal	3.00 to 3.20
Rolls Wheat	5.50
Wheat Bran, per ton	18.00 to 18.50
Shorts	13.00 to 15.00
Middlings	23.00 to 25.00
Cracked Corn including bags	32.00
Ground Oil Cake, per ton	35.00
Moulée	28.00
Split Peas	3.75 to 4.00
White Beans, per bushel	1.60 to 2.00
Pot barley, per barrel	3.90 to 4.10
Canadian Oats, choice quality	82 to 83
P. E. I. Oats	80 to 81
Hay per ton	10.00

J. A. CHIPMAN & Co., Head of Central Wharf, Halifax, N. S.

PROVISIONS.

Beef, Am. Ex. Mess, duty paid	12.50 to 13.00
" Am. Plate	12.50 to 13.00
" Ex. Plate	13.50 to 14.00
Pork, Mess, American	16.50 to 17.00
" American, clear	18.00 to 19.00
" P. E. I. Mess	16.50 to 17.00
" P. E. I. Thin Mess	14.00
" Prime Mess	12.50 to 13.00
Lard, Tubs and Pails, P. E. Island	12
" American	11 to 12
Hams, P. E. I., green	8 to 9

Prices are for wholesale lots only, and are liable to change daily.

BUTTER AND CHEESE.

Nova Scotia Choice Fresh Prints	55
" in Small Tubs	50 to 52
" Good, in large tubs, new	18 to 20
" old	7 to 10
" Store Packed & oversalted	10
Canadian Township, new	14 to 20
" Western	16 to 17
" old	7 to 10
Cheese, Canadian, new	10
" Antigonish	10½