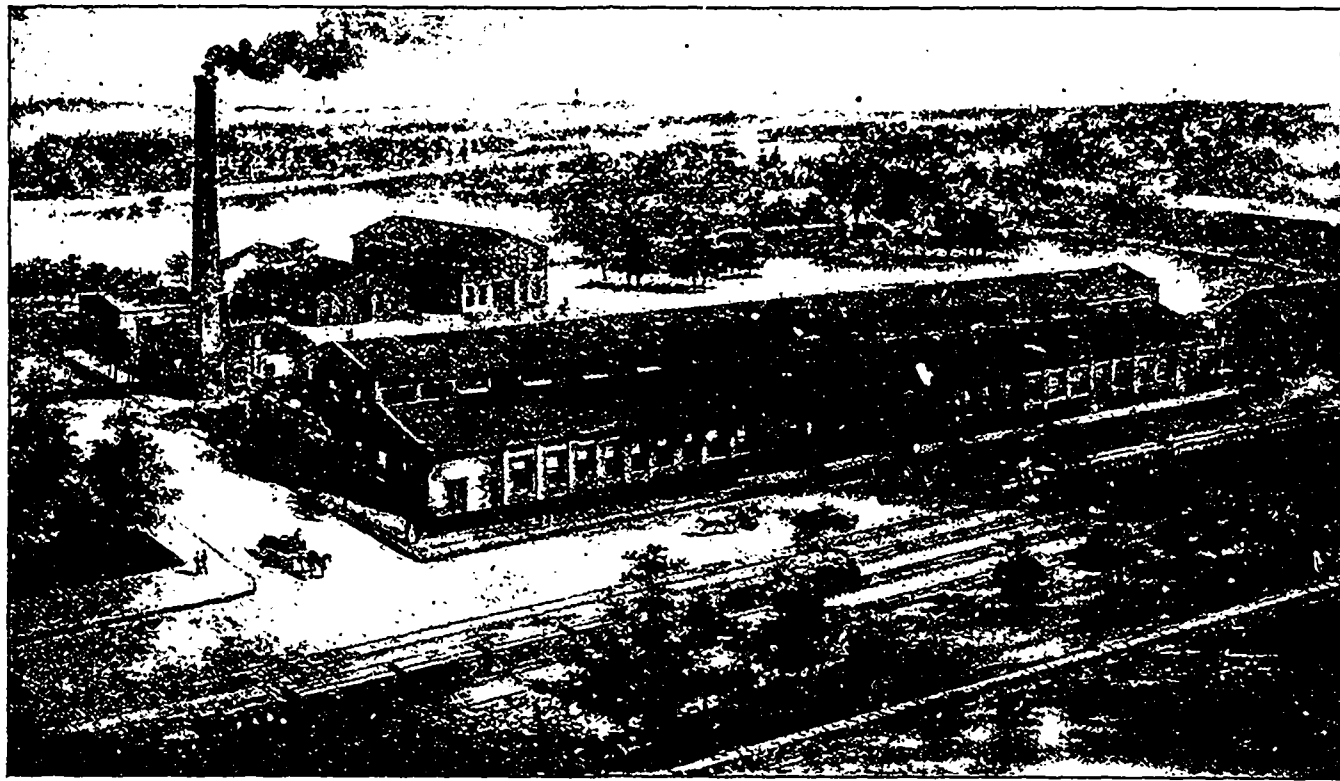


# THE CANADIAN RAND DRILL CO'S PLANT

SHERBROOKE, QUEBEC.



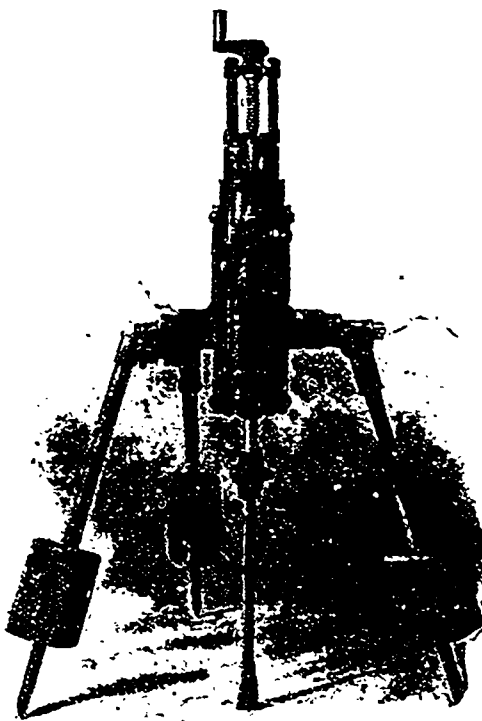
View of Canadian Rand Drill Co's Plant at Sherbrooke, Que.

In presenting to our readers a sketch of the Canadian Rand Drill Co's plant, we feel that it is a subject of interest to manufacturers from Newfoundland to the Pacific Coast. The company was formed about fifteen years ago and their growth has been phenomenal.

In a space of 60x40 feet, rented from the Jenckes Machine Co., Limited, at Sherbrooke, Que., the company started to manufacture their well known lines, and to-day they occupy and own, one of the most modern and up-to-date plants in Canada. The shops are located on the south side of the Magog River, at Sherbrooke, on the main line of the Canadian Pacific Railway, with a spur running to the shops. These shops were occupied about the end of 1899, the main shop being 200x84 feet. This at the time was thought to be sufficient for a long time to come, but only last year it was found necessary to add another hundred feet to the length of the building. All this space is now fully occupied, and it is only a question of time, when it will be found necessary to still further enlarge the buildings. The plant is equipped with all facilities for handling work expeditiously and cheaply.

The plan of arrangement has not been to place similar machines together, but, knowing the work to be done, the machines have been placed in reference to this, so that the rough casting may be started at one machine, passed to another, and so on, each machine doing its particular work, till the piece arrives at the erecting floor, having been moved around the shop no more than is

necessary. The shop is equipped with two large travelling cranes, for the main erecting floor and with a smaller crane for the small machine erecting floor.



Little Giant Rock Drill.

The arrangement is, that the right side of the shop is devoted to the manufacture of rock drills, coal cutters and air hoists, with their erecting departments at the end of the aisle, while the left side of the shop is where the compressors are built. The main aisle is used for erecting the larger machines, and has wheel pits and a concrete floor, so that the machines only require to be lined side ways, being set up on "I" beams.

Standardization is a necessary feature of the drill department, consequently, every part has its own special jig.

Records of tools and jigs are kept by the check system, each man carrying a ring of brass checks with his number stamped on it.

About the middle of the building, separated by wire fencing, is the shipping and stores department and here is kept all finished drill and compressor parts.

Almost opposite the stores, on the left side of the building, is the smithy, equipped with power hammer, forges and case hardening furnaces. The smithy is equipped with blowers and exhausters and is free from the usual dense smoke seen in such places.

Naturally, compressed air plays a very important part in the shops, being used for testing rock drills, cleaning castings, pneumatic tools, hoists, cranes, etc.

To the left of the building is located the engine room, equipped with a Jenckes-Corliss, 90 h. p. engine and a Rand "B<sub>3</sub>" compressor. Here also is located a centrifugal pump, with its independent engine, used to circulate the water in the heating system. The Evans Admiral hot water system is used for heating the buildings, and is done by exhaust steam from the engine, after it comes from the feed water heater, heating the water in a large exhaust heater, similar to a feed water heater, circulating through some 10,000 feet of 1½ inch pipe. The piping extends all

When writing to Advertisers kindly mention THE CANADIAN MANUFACTURER.