

Planning the Apple Orchard

Information For Those Who Are Thinking of, or Preparing to Set Out New Orchards

This summer is the time to lay your plans and to commence your preparations for the orchard you intend to plant out next spring. Much of the success of your future orchard will depend on the preparation of the soil this summer, including efficient drainage (if necessary), ample fertilization, and thorough cultivation. Rich soil, well prepared is most essential if you wish your trees to do well and your orchard to return the ultimate profits of which it is capable.

Varieties and Arrangement

A rectangular style of planting as shown in illustration, will be found one of the best arrangements for apple trees. The permanent trees marked X are placed in rows 40 ft. apart each way, on very rich soil; on ordinary soil 35 ft. Fillers are placed midway between these in the rows and in the centre of the squares thus formed. This leaves the trees 20 ft. apart each way. There are three fillers to each permanent tree.

In 15 to 20 years, or as soon as the trees commence to crowd, remove two out of every three fillers—the one marked O in illustration—leaving the centre filler. This leaves just one-half the trees originally set out. There is now one filler for each permanent tree. These can stand for approximately 25 years, when they should also be removed, leaving only the permanent trees.

The best permanent varieties for Southern Ontario are Spy, Baldwin and Blenheim. Farther north plant Stark instead of Baldwin. For fillers use heavy and early bearers such as Duchess, Wealthy, Ontario, Wagener, Ben Davis, Gano and Pewaukee. McIntosh is a splendid fall apple which can be used either as a filler or a permanent variety, but as it is being planted pretty heavily just now, it is just as well not to plant too many of this variety.

Watch This Page for Further Information on Orchard Care and Management

E. D. SMITH, Nurseryman

Winona, Ont.

GARDENERS AND FLORISTS ATTENTION

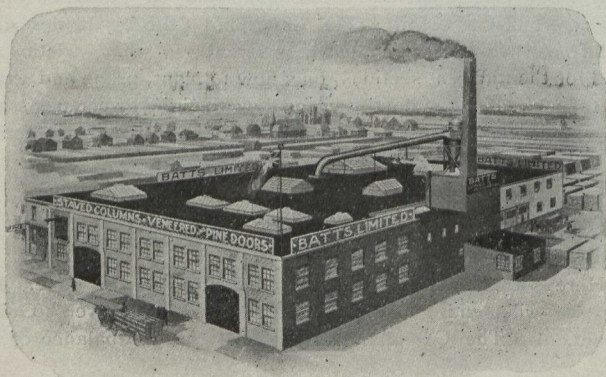
USE ONLY GULF COAST

LOUISIANA RED CYPRESS

IN YOUR

GREENHOUSE CONSTRUCTION

This is the Only Kind We Handle



BATTS LIMITED

Phones Junc. 568-569

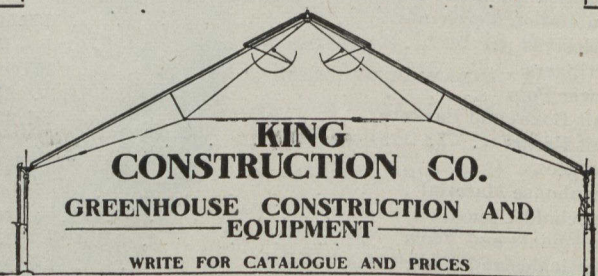
Head Office:
368 to 388 Pacific Ave.
WEST TORONTO

KING GREENHOUSES

Are the most

MODERN AND PERMANENT

Greenhouses that can be constructed. Years of actual test and the experience of large and small growers have gained for our houses the reputation of being the most satisfactory ever erected for vegetable or flower growing, or private conservatories.



**KING
CONSTRUCTION CO.**

**GREENHOUSE CONSTRUCTION AND
EQUIPMENT**

WRITE FOR CATALOGUE AND PRICES

Plans prepared for complete plants and equipment at a moderate cost: all or part of the necessary materials supplied and houses of any size erected under our personal supervision if desired by builder.

Write and tell us the kind of houses you desire to erect or ask for question blank and we will mail you our descriptive bulletin by return of mail.

THE KING CONSTRUCTION CO.

Cor. Dovercourt Rd. and Sudbury St., TORONTO, ONT.

Mention The Canadian Horticulturist when writing.