

# Overland

TRADE MARK REG.

## An Unmatched Success

Year after year for many years the thirty-five horse-power Overland has outsold, by a wide margin, all cars of such comfortable size.

An unequalled combination of power, comfort and economy, it has naturally been an unmatched success.

The thirty-five horse-power motor is not only unusually powerful—it is unusually economical.

The wheelbase is 112 inches—unusually long—permitting unusual roominess.

Also unusual at the price—cantilever

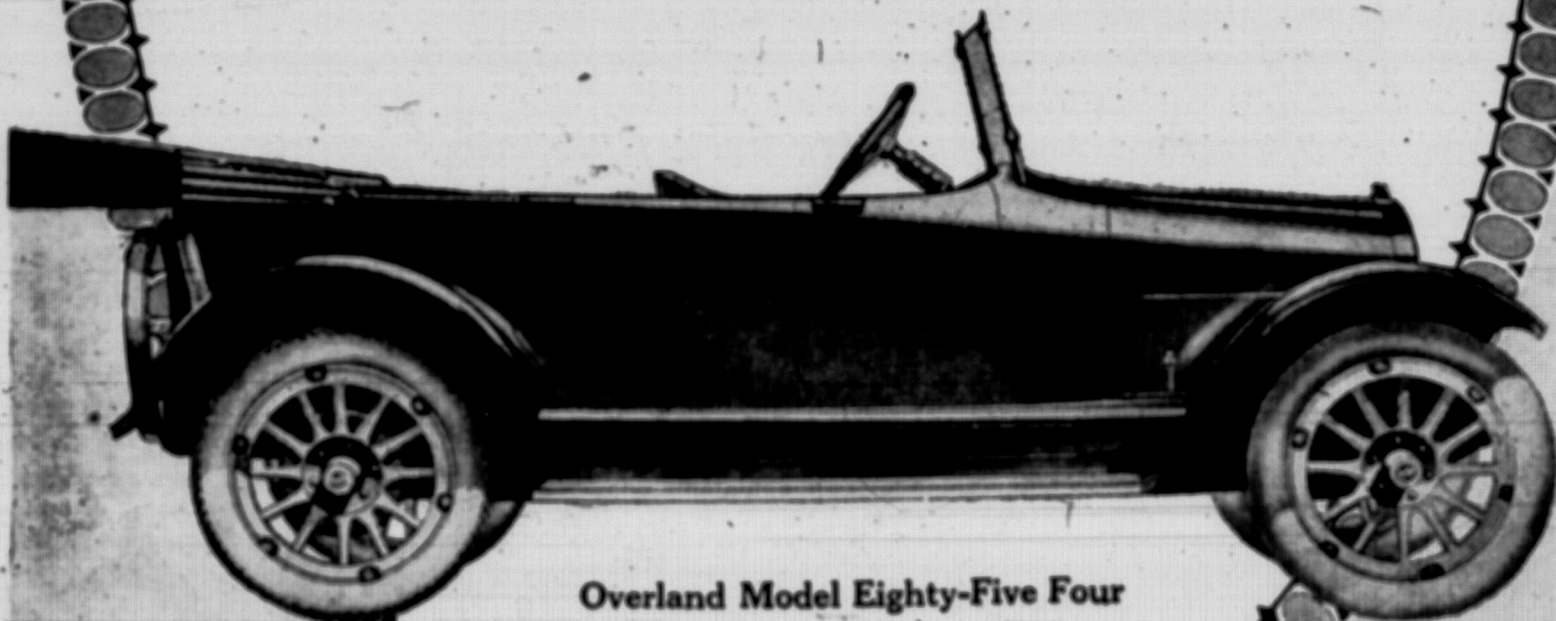
rear springs that ease the car over rough spots—permit speed with comfort on poor roads.

No car of such comfortable size has ever approached its success, because none has ever combined such power, comfort and economy.

CATALOGUE ON REQUEST, ADDRESS DEPT. 1111

**Willys-Overland, Limited**

Willys-Knight and Overland Motor Cars and Light Commercial Wagons  
— Head Office and Works, West Toronto, Ontario



Overland Model Eighty-Five Four