

# You Want Our PREMIUMS

Every Premium We Offer Is Exceptionally Good Value. We Give Greater Value in Our Premiums Than If You Were Paid a Cash Commission. Note the Following List:

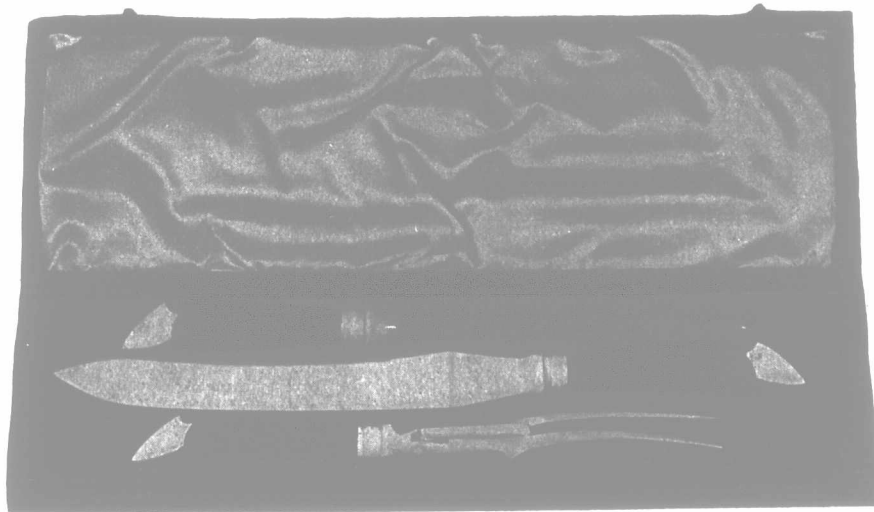
# We Want New SUBSCRIBERS

**40-PIECE AUSTRIAN CHINA TEA SET**, handsome and dainty in shape, coloring and design; ordinarily retailing from \$4.00 to \$6.00, depending on locality. **4 new subscribers.**

**FARMER'S ADVOCATE KNIVES**, manufactured by Jos. Rodgers, Sheffield, England. Jackknife and Penknife, both nickel-handled and having two blades. These knives were manufactured specially for the Farmer's Advocate. Worth, retail, \$1.00 each. **1 new subscriber for each knife.**

**DICTIONARY.** An indispensable volume in every home. The Chambers' Twentieth Century Dictionary. Cloth bound, contains 1,200 pages, profusely illustrated, printed on superior quality of paper. **2 new subscribers.**

We must have honest workers. Changing the name from one member of the household to another, or deception of any kind, will not be allowed. If discovered, the premium will be withheld.



**SET STAGHORN CARVERS.** High-class goods. First quality of steel, and staghorn handles and handsome nickel mounting. These carvers will retail at \$3.50 to \$5.00 per set. **4 new subscribers.**

**"CARMICHAEL": A Canadian Farm Story.** Bound in cloth, illustrated. Just the thing for Christmas or Birthday Gift. "Far above the ordinary run of fiction," says the Buffalo Courier. "Should be in all the homes of the people," Toronto World. **2 new subscribers; or cash, \$1.25.**

**BARON'S PRIDE.** Handsome picture of the Champion Clydesdale. Size, 17 x 13 in., including margin. Suitable for framing. **1 new subscriber.**

**NICKEL WATCH.** Good timekeeper. This watch has taken well. **3 new subscribers.**

**MOUTHORGANS.** Best German make. Keys, A, C, D, E. Two instruments. **1 new subscriber.** Or choice of one Mouthorgan and one Compass. **1 new subscriber.**

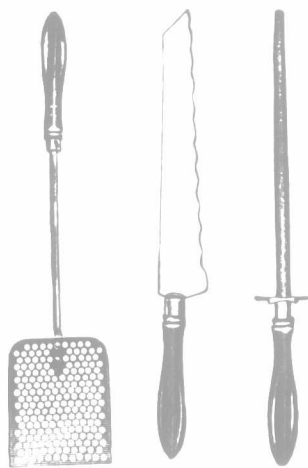
These premiums are given only to our present subscribers for sending in bona-fide new yearly subscriptions, accompanied by \$1.50 each.

**SET SCISSORS.**—One self-sharpening scissors, one embroidery scissors, one buttonhole scissors—will cut buttonhole any size. All good quality steel. For only **One New Subscriber** to The Farmer's Advocate. Must be sent by present subscriber.

### A Complete Kitchen Equipment. A Utensil for Every Purpose.

All made of the highest grade of crucible steel, carefully tempered, ground and polished by the latest improved process. Rubberoid finished hardwood handles, mounted with nickel-plated ferrules. Now is your opportunity to supply your kitchen with a complete cutlery outfit.

**All Six Articles Sent to Any Subscriber for Sending in only ONE STRICTLY NEW SUBSCRIPTION and \$1.50.**



**BIBLE—Old and New Testaments** in beautifully clear, legible type; references; concordance to both Old and New Testaments. Index to names of persons, places and subjects occurring in the Scriptures. Twelve full-page maps, all excellent in type and outline. This book is of most convenient size, being 7 x 10 inches when open; weight 23 ounces; with strong and flexible binding; and would sell at regular retail price for \$1.00 or over. Sent postpaid to any subscriber for sending in only **2 new subscriptions accompanied by \$3.00.**

**SEND POSTAL FOR SAMPLE COPIES AND AGENT'S OUTFIT AND START TO CANVASS AT ONCE.**  
**The William Weld Company, Limited, London, Ontario.**

It is not the Low First Cost of a Furnace that Counts

## ALWAYS INSTAL A PEASE "ECONOMY" FURNACE

so much as its low cost for fuel and repairs, and the length of life it has after it is installed. That is where the "Pease" has always made good—and why you have never met a user of a "Pease Economy" who said anything but good words—in fact our customers are the best advertising we have.

Write for Illustrated Catalogue.

"Pease Economy" hot water heating system is as strong a leader in its line as the "Pease Economy" warm air furnace has been for twenty-five years.  
**PEASE FOUNDRY CO., LIMITED, TORONTO AND WINNIPEG**  
 Manufacturers Boilers, Furnaces, Combination Heaters, Etc. 1517

### THIS IS THE SHEET METAL AGE

Fire or lightning are no menace to the safety of a structure protected by the new "Galt" Steel Shingles and Galt "Art" Sidings. The "Galt" is not the first shingle—but it's the first perfect shingle. Why shouldn't it be—haven't we the weaknesses of all others to warn us?

The fiercest gale can't drive rain or snow through the Gale-proof, Closed-end, Side-locks, or the continuous overlapping and interlocking bottom lock of the "Galt" Shingles.

Covered nailing flanges both top and sides—no wind can loosen them. No openings or cleats. Easiest and quickest to lay. Handsome Bold Gothic Tile patterns—fit for a palace. Best British Galvanized Steel Sheets—Guaranteed to last a life time. Ask for Catalog "B-3"—it tells all about them.

**THE GALT ART METAL CO., LIMITED, GALT, ONT.**  
 Sales and Distributing Agents: Dunn Bros., Winnipeg and Regina.

# "Galt" Shingles

