

THE STOVE WITH 3,000,000 FRIENDS

3,000,000 housewives have discovered the way to better cooking, cooler kitchens and less work. They use the New Perfection Oil Cook Stove.

Ask your neighbor. She knows the New Perfection Oil Cook Stove is dependable and easy to operate. She knows the Long Blue Chimney gives a clean, intense heat—without odor, or smoke. She knows the convenience and economy of using oil for fuel.

The New Perfection Oven bakes unusually well—makes the stove a complete cooking device.

The Cabinet adds to the appearance of the stove and provides extra room for utensils.

Royalite Coal Oil gives best results.

IMPERIAL OIL LIMITED
BRANCHES IN ALL CITIES

NEW PERFECTION
OIL COOK STOVE

The Urgent Cry of the Motherland and Her Allies to Canada is SEND US MORE WHEAT

Ontario farmers have responded nobly, but still greater efforts are necessary if we are to win the conflict in which the British Empire is fighting for its existence. It may be asked

HOW CAN THE PRODUCTION OF WHEAT BE INCREASED?

The answer is:—

Use Sydney Basic Slag

or at any rate use some kind of fertilizer. The most progressive farmers are increasing their consumption of fertilizers all the time because they find it pays. If you have never used any, no doubt you have often thought of doing so. Drop us a line and let our representative, who is a practical farmer, call and have a talk with you. If we think it worth while spending our money in sending him to see you it is because we know that once we get you using Sydney Basic Slag you will be a permanent buyer for our mutual benefit.

The Cross Fertilizer Co., Limited, Sydney, Nova Scotia

Patent Solicitors—Fetherstonhaugh & Co. The old established firm. Patents everywhere. Head Office, Royal Bank Building, Toronto. Ottawa Office, 15 Elgin St. Offices throughout Canada. Booklet free.

PATENTS Trade Marks and Designs Procured in all Countries. Special attention given to patent litigation. Pamphlet sent free on application. RIDOUT & MAYBEE Crown Life Bldg. Toronto, Ont.

Treatment of Fruit Trees Which Have Been Injured by Mice or Rabbits.

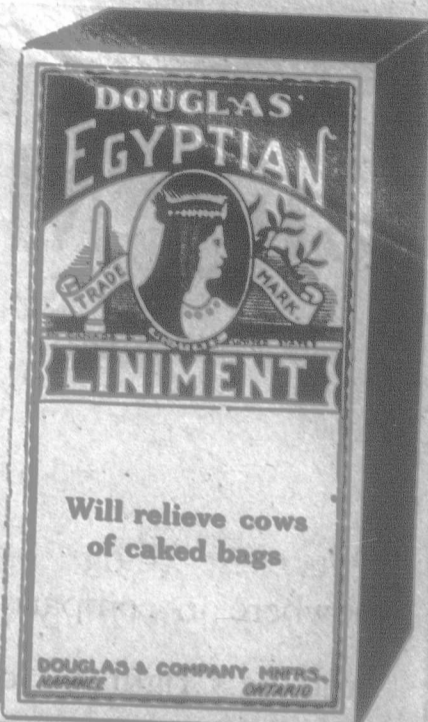
As mice or rabbits have, doubtless, injured many trees in Canada during the past winter, the following information is given in regard to the treatment of the trees in order to save them. If a tree is badly girdled by mice or rabbits it usually dies if left untreated. If, as soon as the wound is noticed, it is cleaned and covered with grafting wax or some paste, such as sulphur, cow dung and clay, and wrapped with cloth to exclude air and prevent the wood from drying out, there is a possibility of saving the tree if the girdle is a small one, as the sap which rises through the wood will continue to do so, and returning through the inner bark in an elaborated condition will cause growth to be made all around the upper part of the wound, and if the latter be not too large there is a chance of its healing over. If, however, the wood becomes dry before the bandage is put on, the tree will almost certainly die, although it may continue to grow throughout the season. When the wax and bandage are applied the tree should be headed back considerably to lessen the amount of transpiration of moisture, as there will not be as much sap rise as if the tree were uninjured, and the wood will thus dry out sooner than if it were headed back. If the girdle is near the ground, in addition to covering the injured part with wax or cow dung and clay, it is advisable to mound up the soil about the tree to cover the wound and thus help to prevent the wood from drying out. The mound should be up about six inches above the wound and be about two feet cross at the base.

Girdled trees are frequently saved, and more surely saved than by the above method, by connecting the upper and lower edges of the girdle with scions, which are inserted about an inch apart all around the trunk. This is known as bridge grafting. The more scions that are used the more quickly they will grow together and form a new trunk, but two or three scions successfully grafted on a small tree will carry enough sap to keep the tree alive. A slanting cut is made at each end of the wound in the uninjured wood in which the ends of the scions are to be inserted. Strong, plump scions of the previous season's growth—not necessarily from the same tree, nor even the same variety—cut a little longer than the distance between the slanting cuts, are made wedge-shaped at each end. They are made a little longer than the distance between the cuts in order that when inserting the ends into the cuts it will be necessary to bend them, and thus have them under pressure which helps to keep them in position. After inserting, some of the inside bark of the stock should remain in contact with the inside bark of the scion, as it is here, or at the cambium layer, where union takes place. As soon as the scions are all placed, the wound, especially about the scions where inserted in the stock, is covered with grafting wax. The ends are also at the same time bandaged with a piece of sacking around the trunk to aid in keeping the scions in place and to exclude the air. The tree should then be well headed back. The scions, if properly made and inserted, should soon unite with the stock and then carry the sap to the top of the tree.

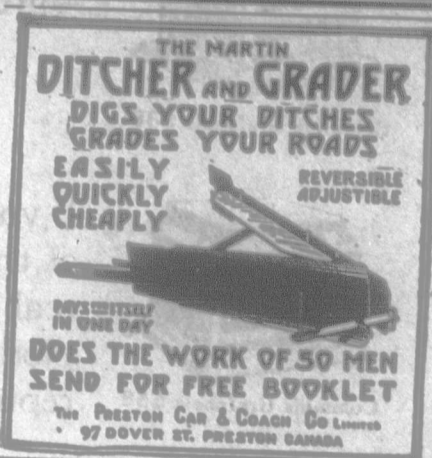
One of the most satisfactory methods of utilizing the badly girdled tree is to cut it off close to the ground and insert a scion of some good variety. This graft should grow at least three feet in height the first season and make a nice young tree.

A young tree may sometimes be saved when the girdling is well above the graft by cutting the tree back so as to remove all of the injured part. Under such conditions young trees will usually make new growth and the strongest shoot may be selected to form a new trunk and top for the tree. This method is not usually very satisfactory if the injury occurs more than two years after the tree has been planted.—Experimental Farms Note.

The Canadian Food Board has issued an order limiting the holding of sugar beyond more than enough to last 15 days by anyone except dealers and persons living over 2 miles from a dealer



Cream Wanted
For good service and better prices, ship your cream to us. We guarantee the test, and pay 52 cents a pound butterfat. We remit daily and pay express charges.
The Mutual Dairy & Creamery Co.
743-745 King St. W. TORONTO



The little Gun that Kills Potato Bugs
With Poison Dust it will do 2 rows at a time as fast as a man can walk. Write for Agency contract. Sells on sight. Manfd. by
Hillsley & Harvey Co., Ltd.
Port Williams, Nova Scotia

Steel Wheels Made to Fit Your Old or New Wagon
Now is the time to place your order for a set of "COOKE" Steel Wheels. They are giving universal satisfaction in every province in the Dominion. The cost is small, and as a labor saver they are unexcelled. A set of our wheels will make a new wagon out of your old one. Write to-day for illustrated circular and price list, together with free chart, showing how to take measurements correctly, and testimonials from satisfied customers in all parts of Canada. Remember, we quote price delivered to your nearest station, no matter where you live.
THE COOKE METAL WHEEL COMPANY
19 West Street, Orillia, Ont.