

The Upward Look

What is God's Will?

In the parable of the Good Samaritan Jesus has set forth very clearly and simply our relationship and duty to our fellow men. In the Gospel according to Matthew, the twenty-second chapter, Jesus, preceding the giving of this parable, as related in the text, of Luke, said that if we will but love God with all our heart and with all our soul, and with all our mind, and our neighbor as ourselves, we will fulfill all the teachings of the Bible and of the prophets.

It is beginning to appear as if Christians to-day are only now awakening to the true meaning of this parable, and of the teachings which immediately preceded it. In our study of this parable we should notice that the Good Samaritan did not merely give sympathy to the sufferer, as so many Christians do to suffering people in the slums; he did not content himself with giving alms, which would have helped him but little without more tangible assistance, nor did he offer to remain by him and sympathize with him while he lay, as so many of our noble Christian workers are doing in the poor districts of our great cities. Instead, he did something much better. He treated him as a brother. He took him away from his dangerous surroundings, and thus made it impossible for the robbers to again rob him of any possessions that might be given him for his aid. He left him among friends, where his complete recovery might be assured.

This sets forth clearly what our attitude should be to the poor. We are not to content ourselves with giving them charity, nor are we to be satisfied with establishing social settlements in the poor districts. Instead, we are to discover and remove the great primal causes of poverty in order that every man, woman and child, may have an equal opportunity to make the highest and best out of their lives. To neglect to do this is to fall short of doing our full duty.

Only a few years ago doctors were content to prescribe for each case of typhoid, or small pox, or yellow fever, or consumption, that came before them as though it were the only case that had to be dealt with. In time, however, they came to see that, especially when epidemics raged, new cases of sickness were being created faster than they could be cured. And so they set to work to ascertain the causes. Soon it became apparent that small pox was due to filth, that typhoid was caused by impure water, that yellow fever was brought on by the sting of a certain mosquito, and that consumption was due to a lack of plain nourishing food, fresh air and sunshine. These discoveries have led to serious outbreaks of small pox becoming almost unknown on this continent, to the speedy discovery and removal of the causes that lead to outbreaks of typhoid, to the draining of hundreds of thousands of acres of swamp lands, where mosquitoes propagate, as has been done on the Isthmus of Panama, until the yellow fever has been driven from whole sections of country, and to the tearing down of unsanitary tenements, and to the removal of other causes of consumption until now it is declared that 85 per cent. of the cases of consumption can be prevented.

It is only a few years since Christians believed that outbreaks of diseases were sent by God, and we heard much about being resigned to the will of God. To-day we see that serious outbreaks of disease, such as those described, are due to man's ignorance of God's laws, and that God has placed at our disposal means of overcoming them, if we will but use

them. And thus we have obtained a truer and more inspiring vision of God's will towards us.

This new conception of God's will is leading men now to ask if God desires that millions of people shall constantly live on the edge of poverty, or, as many do, in dire want. And we raise this question, we cannot help but wonder if Christ when he told us to pray, "Thy kingdom come, Thy will be done in earth as it is in heaven," intended us to pray for something which could not be realized? It is true that we are told that the poor are to be with us always, but may we not believe that that was intended to apply only until Christ's kingdom shall come?

To-day new prophets are arising among the leaders of our churches who are proclaiming that the main causes of poverty, which are due to monopoly in one form or another, can be removed just as have been the causes of our great outbreaks of disease. And thus new visions of God's love and of our brotherhood and duty to one another are coming home to us. These are wonderful times in which we live. Well may we pray that Christians everywhere may be found ready when the call comes, to cast aside old preconceived notions and views in order that like the Israelites of old, they may be permitted to walk into the promised land of God's kingdom on earth, when He leads the way.—J. H. N.

The women build the home.

Every housewife dreads cleaning a kettle in which oatmeal or hominy has been cooked. She will, no doubt, welcome this information. First, grease the pan generously with lard and fill it with cold water. Then add the cereal. Lard prevents the cereal from adhering to the bottom and sides. The cereal forms a thin scale, which may easily be removed.

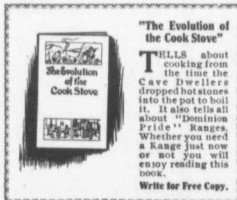


**SAVE OVER \$25
WHEN BUYING YOUR
RANGE
THIS FALL.**

You Can Buy "DOMINION PRIDE" RANGE At Factory Price
Direct From The Largest Malleable Range Works in Canada

If you want to save from \$25 to \$30, and at the same time get the most satisfactory kitchen range made, write for our Catalogue and look into the merits of the "DOMINION PRIDE," at from \$41 to \$49.

If we sold you identically the same range in the usual way, through a dealer, you would have to pay from \$69 to \$78 for it. You would be paying two extra profits—to wholesaler and retailer—which would add \$25 to \$30 to the cost of your range, but absolutely nothing to its value.



Besides costing much less than other ranges in its class, the "DOMINION PRIDE" is much more satisfactory. It is made of tough, strong, malleable iron and the best blue polished steel—materials which will not warp, crack or break.

The polished steel does not need blacking—simply rub it over with a cloth. With its cold rolled steel plate oven—sectional from fire-box lining, with its chamber and double-nailed blue lined interior—which would add to the "DOMINION PRIDE" is the most economical range you can buy. Actual tests have proved that it saves over 30% of fuel, burning either wood or coal.

WE PAY THE FREIGHT

A "DOMINION PRIDE" Range, with high chest and elevated tank or flush reservoir, with zinc sheet to go under range, 8 sections blue polished steel pipe and two elbows, will be delivered to any station in Ontario, Quebec or the Maritime Provinces for \$41, or to any station in the four Western Provinces for \$49—to be sent with order and balance to be paid when the range is delivered at your station. If not convenient to pay cash we will arrange to accept your note.

Canada Malleable & Steel Range Mfg. Co., Limited, Oshawa, Ont.

When writing it will be a distinct favor to us if you will mention this paper.

Take A Scoopful Of Each— Side By Side

Take "St. Lawrence" Granulated in one scoop—and any other sugar in the other.

Look at "St. Lawrence" Sugar—its perfect crystals—its pure, white sparkle—its even grain. Test it point by point, and you will see that



Absolutely Best *St. Lawrence* **Absolutely Pure**
Sugar

is one of the choicest sugars ever refined—with a standard of purity that few sugars can boast. Try it in your home.

Analysis shows, "St. Lawrence Granulated" to be "99.99 to 100% Pure Case Sugar" with no impurities whatever!

"Most every dealer sells St. Lawrence Sugar."

ST. LAWRENCE SUGAR REFINERIES LIMITED, MONTREAL.

CHALLENGE

Save you money

Stop all laundry troubles. "Challenge" Collars can be cleaned with a rub from a wet cloth—smart and dressy always. The correct dull finish and texture of the best linen.

If your dealer hasn't "Challenge" Brand write us enclosing money, 25c. for collars, 20¢. per pair for cuffs. We will supply you. Send for new style book.

THE ARLINGTON CO. OF CANADA
Limited
84-84 Fraser Ave., Toronto, Can.

← DIRECT FROM FACTORY TO KITCHEN →



**\$41.00
TO
\$49.00**

AND WE PAY THE FREIGHT