

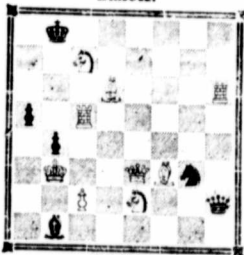
CHESS COLUMN.

All communications and contributions to be addressed to J. E. NARRAWAY, P. O. Box 70.

Problem No. 13.

BY JOSEPH N. BABSON.

BLACK.



WHITE.

Self mate in eight moves.

We have received but one correct solution to Mr. Stubbs's problem, No. 11, published a fortnight since—from Mr. Joseph N. Babson, Boston. The solution is as follows:—

- | | |
|--------------|--------|
| 1 Kt—Kt3 | 1 K—B7 |
| 2 Q—Kt2 (ch) | 2 K—Q8 |
| 3 B×P | 3 P—R6 |
| 4 Q—K5 | 4 K—B7 |
| 5 B—R4 (ch) | 5 K—B8 |
| 6 Q—Kt2 (ch) | 6 P×Q |
- Mate.

GAME No. 25.

We take the following very singular game from Lange's *Handbuch*. The moves are logical; yet after 17 moves, a position arises which would be deemed impossible of occurrence in actual play.

- | | |
|---------------|---------------|
| WHITE. | BLACK. |
| 1 P to K4 | 1 P to K4 |
| 2 Kt to B3 | 2 QK to B3 |
| 3 P to Q4 | 3 P×P |
| 4 KB to B4 | 4 B to B4 |
| 5 Castles | 5 Kt to B3 |
| 6 P to K5 | 6 P to Q4 |
| 7 P×Kt | 7 P×B |
| 8 R to Ksq ch | 8 K to Bsq |
| 9 P×P ch | 9 K×P |
| 10 Kt to K5 | 10 R to Ksq |
| 11 Q to R5 | 11 Q to B3 |
| 12 B to R6 ch | 12 K to Kt sq |
| 13 QKt to B3 | 13 P×Kt |
| 14 Kt×Kt | 14 R×R ch |
| 15 R×R | 15 B to B4 |
| 16 P to QKt4 | 16 P×Kt |
| 17 P×B | |

Presenting 6 pawns on one file.—*Phil. C. Record.*

TO CORRESPONDENTS.

J. N. B.—Many thanks for puzzles; hope you will again favor us when you have leisure.

C. S.—What about Hoyle?

BEGINNER.—No. A pawn instead of Queen can become any other piece, a *King* excepted.

A San Francisco bride made her bridal trip upon a vessel on which she was born twenty years ago.—*Detroit Free Press.*

Then she was borne again on the same vessel

Cobbet's wife caught him by the grace with which she used her washtub.—*Ex.*

More likely by "soft soap" than *grace*.

Phonograph is feminine-gender—because it talks back.—*Boston Post.*

Yes, but it never speaks unless it's spoken to.

PUZZLER'S KNOTS.

Edited by ELLSWORTH, P. O. Box 3421, Boston, Mass.

Contributions and answers are cordially invited from all interested in whatever pleases the young, and also from every reader of the TORCH, and the Puzzle fraternity in general. All communications for this Department should be sent to its Editor at the above address.

135.—CROSS-WORD ENIGMA.

- In mouse, not in rat;
- In round, not in flat;
- In Lot, not in his wife;
- In death, not in life;
- In bread, not in butter;
- In knife not in cutter;
- My whole in a Turkish title.

LEWINDER.

136.—HALLOW SQUARE.



Across: Early; to plunder. Down: A boy's name; a girl's name.

137.—GEOGRAPHICAL WHEEL PUZZLE.

Centrals across and down: A village of northern Italy; a town of France. Diagonals left and right: A State of America; a chain of mountains in Asia. External name a well-known city of Europe.

SILV.

138.—REBUS.

S S WROSS.

149.—ANAGRAMS.

- | | |
|-------------|--------------|
| Exert an l. | On real s. |
| Gin men. | On prim ten. |
- SOBER SIDES.

140.—UNION JACK.

Across: An ancient town of Lydia; the aborigines of Crete; persons who encourage growth. Down: An ancient town of Thessaly; one of the tribes into which Romulus divided his people; the dog ramp. Diagonals: The ancient name of a cramp of Britain; to make sweet.

GLEN LYON.

141.—RIDDLE.

I am worn by Chinamen. I am not myself. Two of me now make ease. Lastly, I am to motion. Combine me and I am one of Canada's cities.

CIPHER.

142.—NUMERICAL ENIGMA.

I am composed of 12 letters.
 My 4, 6, 2, 9, 3, 8, 7, 12 is to respect.
 My 7, 3, 8, 10, 2 is a girl's name.
 My 1, 5, 12, 3, 4 is obvious
 My 4, 6, 9, 10 is a sort of instrument.
 My 7, 12, 3, 5 is a kind of fish.
 My 1, 8, 10, 11, 5, 6 is a bed for children.
 My whole is an English novelist.

EPHELY.

148.—CHARADE.

One twelfth of the year my first you'll find
 As a verb 'tis often used
 And many of them you'll call to mind
 Whenever you feel amused.

My second you know you must admire
 When in the joyful spring
 You see its blooms rise high and higher
 And Nature a lovely song does sing.
 My last you'll find in this lame rhyme
 A boat of fame historic rare
 Its name is known since early time
 Its motto was to do and dare.

144.—DOUBLE ACROSTIC.

A city in Connecticut; a fast train; a tree that droops; an illegal confederacy; primitive; to enclose. Primals and finals connected name a portion of our Dominion.

PEW PILL.

145.—WORD PUZZLE.

S O U E. JOSHUA

ANSWERS TO PUZZLES IN JUNE 15.

- 116.—COLIN
 OBESSE
 LEASE
 ISSUES
 NEESSE

- 118.—Mad-a-gas car.
 119.—Frederick the Great.
 120.—Nat, tan.
 121.—Wilful waste makes woeful want.

- 122.— B
 FUN
 BURN
 FRANKLE
 PEACEMAKER

- 123.—Prussia, Prussia.
 124.—Because it is round everywhere.
 125.—Keats, Shelley, Willis.

- 126.—A L L A N
 L O
 I R
 C A
 E D I T H

CHAT WITH KNOTTERS.

PEW PILL, St. John.—We can see the pupil of your eye dilate when you learn your puzzles have been accepted. Your solutions to Nos. 117, 118, 119, 121, 122, 124 and 125 are O. K. Very good for a new beginner.

JOSHUA.—We must say Josh you are an excellent puzzler, and your contributions we are pleased to add to our columns. May your shadow never grow less.

WROSS.—Thanks for your knots. It is pleasing to find you are one of the forget-me-nots. We are glad to learn your interest in our columns is unabated. Please come often.

CLARA L.—We are sorry to say you have been unsuccessful in an-wearing all the Knots. Nos. 117 and 116 are incorrect. We wait your promised puzzles.

JEW SHARP.—Your solutions are accurately given, with the exception of Nos. 124. Your remarks prove you sharp.

PRIZES.—For the list of correct answers to puzzles in this number we will send an excellent prize. For the best incomplete list the Torch three month's.

WORD NEXT.—We cordially invite every reader to enter this amusement, and endeavor to receive the prize; or, at least, be very near the head of the list.

In Benton Harbor, Mich., no boys are allowed out after nine o'clock.—*N. Y. News.*

In St. John the boys are loud out at night, but it's not nine o'clock they're after. They are Bent-on having a good time.

The first thing out in the morning—City gas-light.—*N. Y. News.*

How do you know, did you ever meet'er?

The racy *Rome Sentinel* wants the key to a scalp lock, and the address of whoever has heard of a hog eating from the trough of the sea.

The best time to sea it would be when Old Bore as is blowing from the sow west.