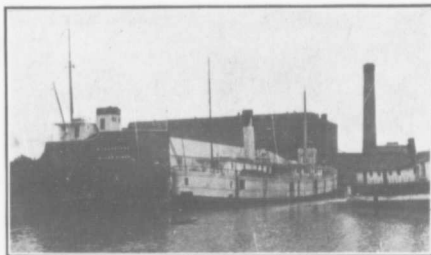


MUNICIPALITIES OF KENT



Wallaceburg is a Recognized Lake Port.

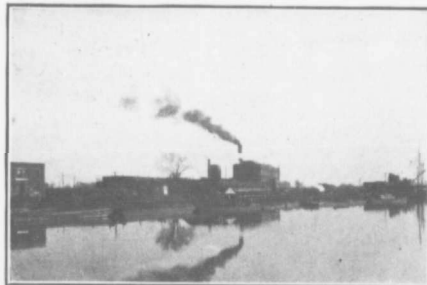
WALLACEBURG

Wallaceburg, the largest town in Kent, offers exceptional advantages to manufacturers.

Chief among these are its unsurpassed shipping facilities by land and water. The channel is sufficiently deep for the largest lake craft. The town is a recognized lake port, vessels of the Mutual and Northern Navigation lines calling regularly.

An unlimited supply of natural gas, offered to manufacturers at low rates, is another great attraction.

Wallaceburg has the largest beet sugar factory in the Dominion of Canada, and the large Sydenham



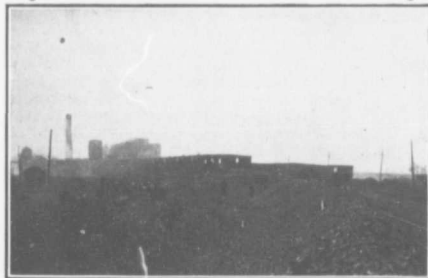
Canada's Largest Sugar Factory.



Deep Enough for the Largest Lake Craft.

Glass factory. These two industries, alone, pay out in wages, annually over \$500,000.

Among other leading industries are the large brass factory, a foundry, a large shipyard, Empire



When the Beet Campaign Is On.