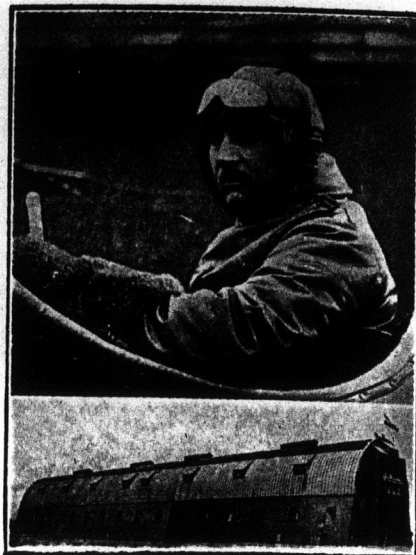




The exodus of refugees from Antwerp passing through Rosendaal in Holland.



Flight-Lieutenant C. H. Collet, of the Royal Naval Air Service, who dropped three bombs on the Zeppelin shed at Dusseldorf, Germany.



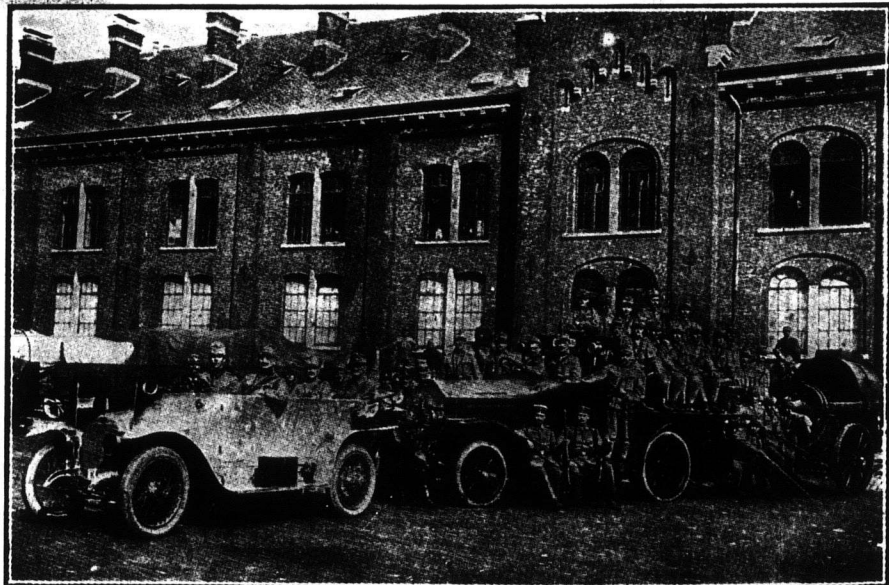
One of the 100-ton German Siege Guns.



Officers of the German Staff considering messages brought by aeroplane scouts which resulted in the Germans being obliged to retreat.



Wearing his stole over his military uniform. A French priest on active service conducting a comrade's funeral.



Siege Guns, lent to Germany by Austria, to assist in the Belgian campaign



Germans in Antwerp. The Germans did not treat Antwerp as badly as they did Louvain but on the slightest excuse would sacrifice life and property.



Belgian Standards tattered by German Shells.