

The collar and cuffs may be entirely of fur, if preferred.

We have pattern No. 2151 in five sizes for ladies from thirty to forty-six inches, bust measure. To make the coat-wrap for a lady of medium size, requires five yards and three-fourths of broadened cloaking fifty-four inches wide, with a yard and an eighth of plain satin twenty inches wide for the inside of the collar and cuffs and for facing. Price of pattern, 1s. or 25 cents.

LADIES' TWO-PIECE STORM COSTUME, CONSISTING OF A DOUBLE-BREADED CAPE AND A FIVE-GORED SKIRT HAVING A FLY CLOSING AND TO BE MADE IN ANY DESIRED LENGTH.

(For Illustrations see Page 689.)

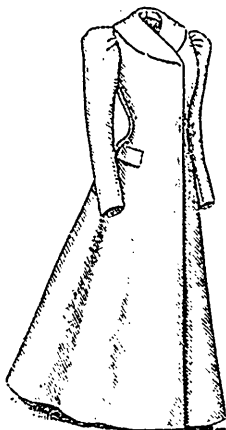
No. 2163.—A practical two-piece costume which will give ample protection in stormy weather is here illustrated made of dark-blue cravenette with a velvet inlay for the collar. The costume consists of a cape and a skirt. The cape has a backward-turning plait at each side of the center seam, the plaits being stitched along the folds from the neck to a short distance below and then flaring slightly; it reaches some distance below the waist and is of circular shaping, fitting smoothly across the shoulders and falling in deep flutes below. The closing is made to the throat in double-breasted style with buttons and button-holes; and the front edges of the cape are reinforced by broad underfacings in which near the bottom convenient pockets are inserted. A turn-down collar having widely flaring ends is at the neck and is effectively inlaid with dark-blue velvet. The cape has a sweep of four yards and a quarter in the medium sizes.

The skirt comprises five gores and is closed with a fly down the front. It is smoothly fitted at the top across the front and sides, a dart at each side of the closing and the shaping at the seams removing every particle of fullness; and the fullness at the back is stylishly arranged at each side of the center in a box-plait that is single at the front and double at the back. The skirt may be made in any desired length, many liking it to reach to the ankles or just above, while others prefer it just to escape the ground. Openings finished with underlaps are left at the side-back seams for slipping the hands in to uphold the petticoat or skirt, if these garments are worn. Generally the skirt is worn over bloomers or a short petticoat. In the full length it measures a little over three yards at the foot in the medium sizes. The top of the skirt is finished with a belt, and a separate pointed belt is passed through upright straps of the material attached to the sewed-on belt.

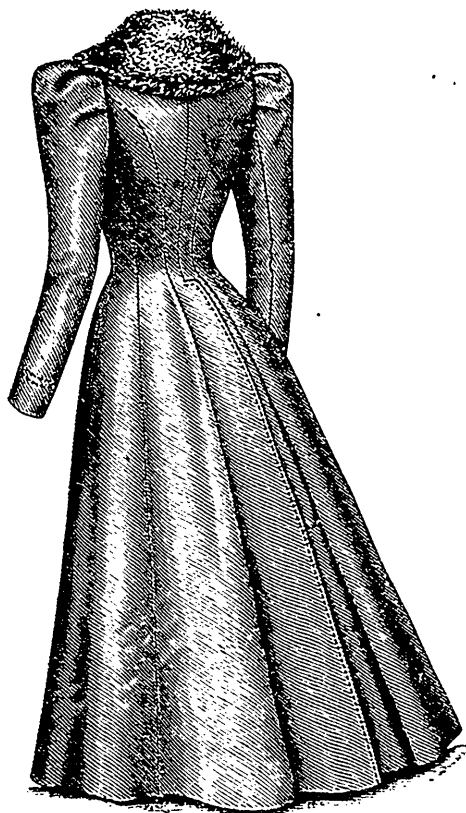
This mode may be suitably developed in all waterproof cloths,

cravenette being the most popular. Waterproof material may be had in plain and mixed effects and also in plaids, stripes, etc.

We have pattern No. 2163 in eight sizes for ladies from thirty-two to forty-six inches, bust measure. To make the costume for a lady of medium size, requires five yards and five-eighths of material forty-eight inches wide, with a fourth



2153



2153

Back View.

LADIES' LONG COAT, WITH SHAWL COLLAR. (TO HAVE THE SLEEVES BOX-PLAIED OR GATHERED.)

(For Description see Page 677.)

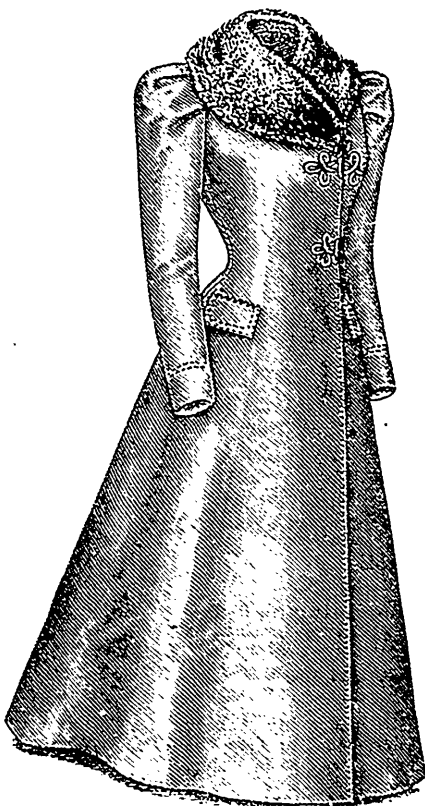
of a yard of velvet twenty inches wide (cut bias) for inlaying the collar. Price of pattern, 1s. or 25 cents.

LADIES' CUTAWAY COAT. (TO HAVE THE SLEEVES BOX-PLAIED OR GATHERED.)

(For Illustrations see Page 681.)

No. 2149.—One of the new cutaway coats is here shown made of brown broadcloth and finished with machine-stitching and buttons. It is closely adjusted on splendid lines by double bust darts, under arm and side-back gores, and a curving center seam that terminates at the top of coat-laps. The fronts are reversed at the top in pointed lapels that form wide notches with the ends of the rolling collar, which is fitted close and high at the back. The closing is made below the lapels with buttons and button-holes. The gores and fronts extend only to the waist, but side-skirts are joined on

smoothly in becoming hip seams and form coat-plaits where they join the backs, the coat-plaits being marked at the top with a button. The side-skirts round away in graceful sweeping curves towards the back in regular cutaway style, and the coat at the back is in three-quarter length. The two-seam sleeves may be gathered or box-plaied at the top.



2153

Front View.