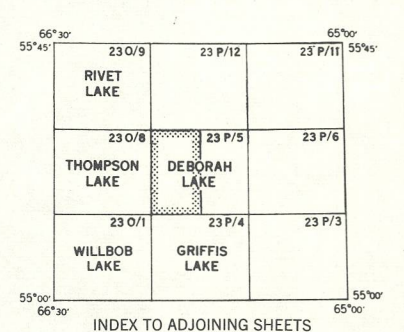
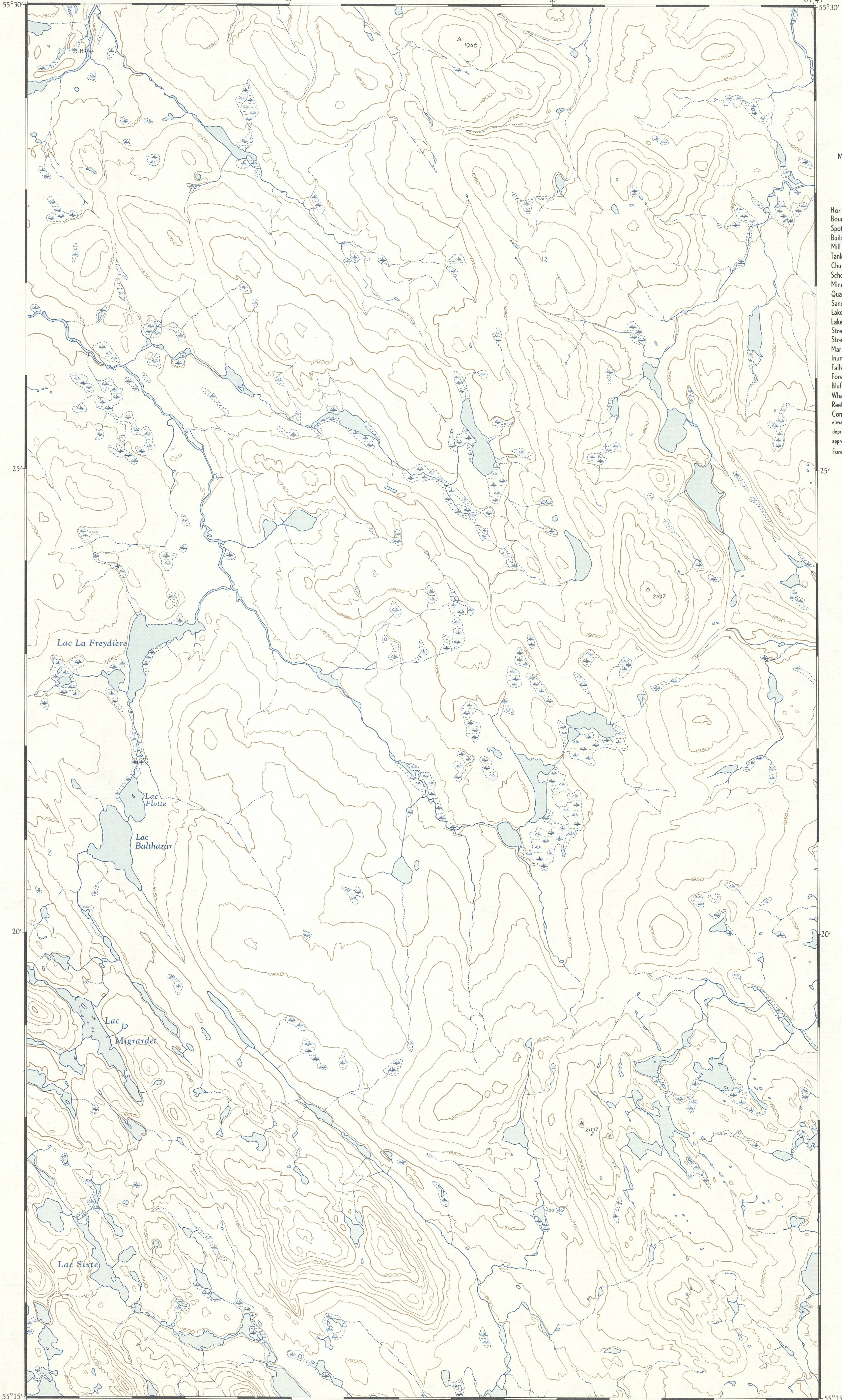




CANADA  
DEPARTMENT OF  
MINES AND TECHNICAL SURVEYS  
SURVEYS AND MAPPING BRANCH

- REFERENCE
- |                                       |         |
|---------------------------------------|---------|
| Horizontal Control point              | Δ       |
| Boundary Mon                          | —       |
| Spot Elevation, (in feet)             | 782     |
| Building                              | ■       |
| Mill or Factory, small; Sawmill, etc. | SM      |
| Tank; Gas, Oil or Water               | ●       |
| Church; Cemetery                      | ☩       |
| School; Post Office                   | ■ S ■ P |
| Mine or Open Cut                      | ✕       |
| Quarry                                | ■       |
| Sand Dunes                            | —       |
| Lake, intermittent or Pond            | —       |
| Lake or Shoreline, indefinite         | —       |
| Stream, intermittent or dry           | —       |
| Stream, indefinite                    | —       |
| Marsh or Swamp                        | —       |
| Inundated Land                        | —       |
| Falls; Rapids                         | —       |
| Foreshore Flats                       | —       |
| Bluff; Cliff or Escarpment            | —       |
| Wharf or Pier                         | —       |
| Reef; Rock or Small Island            | —       |
| Contours:                             |         |
| elevation                             | —       |
| depression                            | —       |
| approximate                           | —       |
| Forest                                | —       |
- This map area is sparsely wooded.



MAGNETIC DECLINATION 34°13' WEST,  
AT CENTRE OF SHEET 1954.  
Annual magnetic change 4' easterly.

DEBORAH LAKE  
QUEBEC  
23 P/5 WEST HALF  
FIRST EDITION