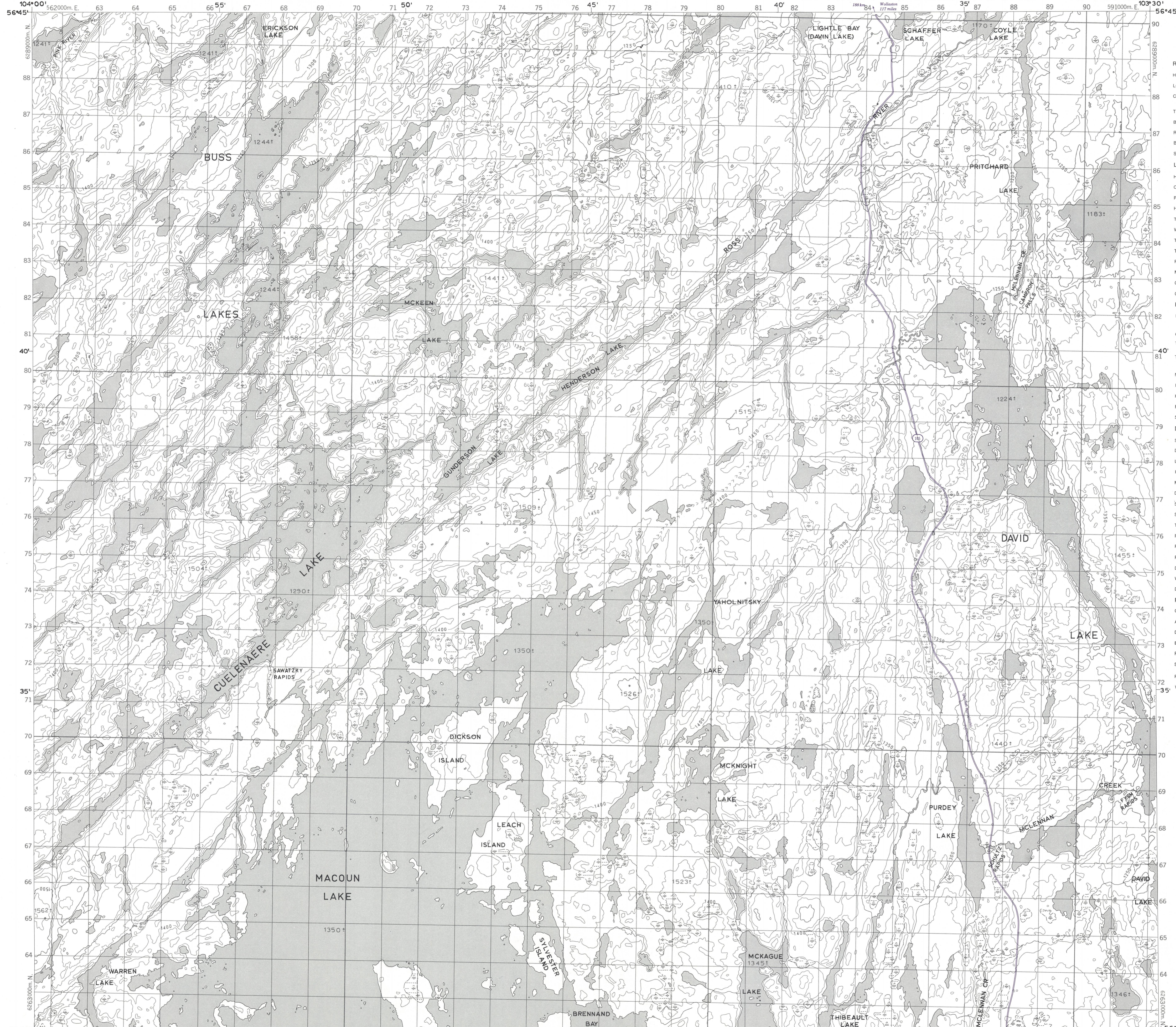


Military users, refer to this map as: Références de la carte pour usage militaire. SERIES A 701 SÉRIE MAP 64 D/12 CARTE ÉDITION 2 MCE ÉDITION

Military users, refer to this map as: Références de la carte pour usage militaire. SERIES A 701 SÉRIE MAP 64 D/12 CARTE ÉDITION 2 MCE ÉDITION



LEGEND - LÉGENDE

Table with two columns: English and French descriptions of map features. Includes categories like 'ROADS AND RELATED FEATURES', 'LANDMARK FEATURES', 'BOUNDARIES AND CONTROL', 'DRAINAGE AND RELATED FEATURES', and 'RELIEF FEATURES'. Each feature is accompanied by a small graphic symbol representing its appearance on the map.

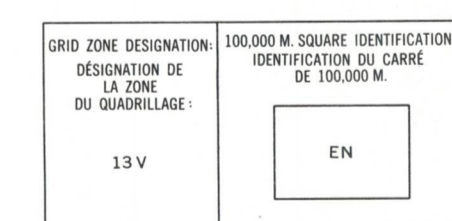
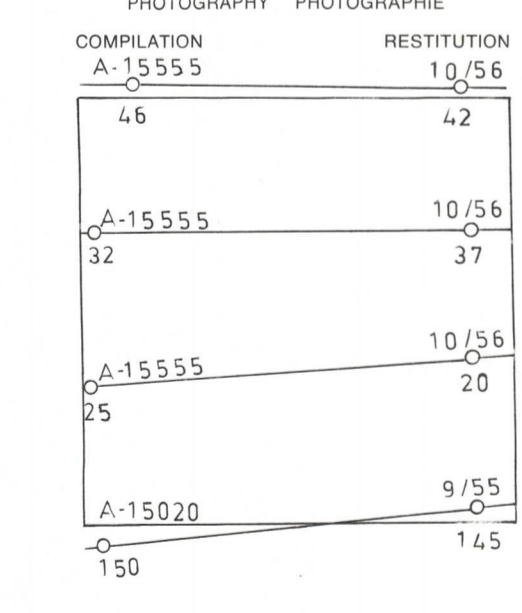
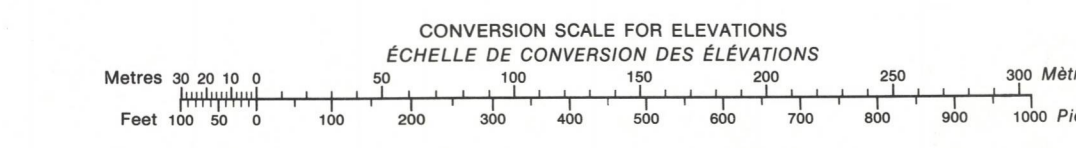


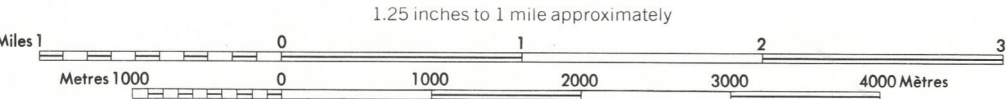
Table showing grid zone designations and coordinates. It includes a grid diagram and text explaining how to use the grid to find a specific point. The table lists coordinates for various points on the grid, such as 74° 16', 64° 13', 64° 14', etc.

ONE THOUSAND METRE UNIVERSAL TRANSVERSE MERCATOR GRID ZONE 13 QUADRILLAGE DE MILLE MÈTRES UNIVERSEL TRANSVERSE DE MERCATOR



MACOUN LAKE SASKATCHEWAN

WEST OF SECOND MERIDIAN - OUEST DU DEUXIÈME MÉRIDIEN SCALE 1:50,000 ÉCHELLE



Overprinted 1975 PRODUCED BY SURVEYS AND MAPPING BRANCH, DEPARTMENT OF ENERGY, MINES AND TECHNICAL SERVICES, OTTAWA, 1969, FROM PHOTOGRAPHS TAKEN IN 1955,56 CONTOUR INTERVAL ----- 50 FEET COPIES MAY BE OBTAINED FROM THE CANADA MAP OFFICE, DEPARTMENT OF ENERGY, MINES AND TECHNICAL SERVICES, OTTAWA. © CANADA COPYRIGHTS RESERVED 1973.

Surimprimée 1975 ÉTABLI PAR LA DIRECTION DES LEVÉS ET DE LA CARTOGRAPHIE, LE MINISTÈRE DE L'ÉNERGIE, DES MINES ET DES RESSOURCES, OTTAWA, EN 1969, D'APRÈS DES PHOTOGRAPHIES PRISES EN 1955,56 ÉQUIDISTANCE DE COURBES ----- 50 PIEDS CES CARTES SONT EN VENTE AU BUREAU DES CARTES DU CANADA, MINISTÈRE DE L'ÉNERGIE, DES MINES ET DES RESSOURCES OTTAWA. © CANADA 1973, TOUS DROITS RÉSERVÉS.