

001631



REVELSTOKE, B. C. FROM MOUNT REVELSTOKE NATIONAL PARK HIGHWAY



2



4

IN REVELSTOKE NATIONAL PARK  
2.—Heart Lake on Mount Revelstoke.  
3.—Snow and Flowers on Mount Revelstoke  
4.—Green Lake on Mountain Top.



1



2



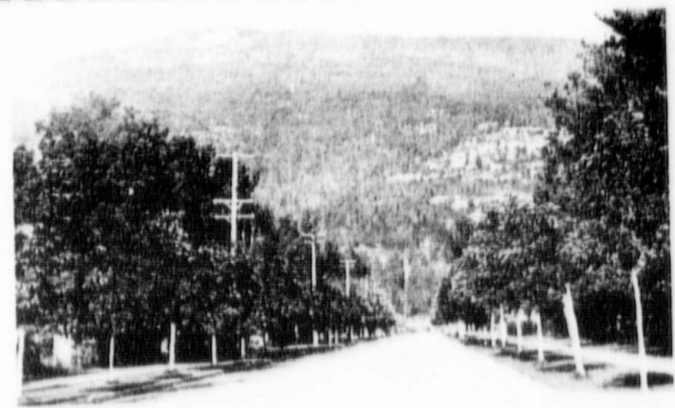
3

SPORTS  
1.—Cricket.  
2.—Baseball.  
3.—Tennis.



3

AROUND REVELSTOKE  
1.—Big Bend Road.  
2.—Mt. Begbie (8974 feet).  
3.—Traffic and Railway Bridges, Revelstoke.



4

2.—Mount Revelstoke National Park, from the City.  
3.—Residential Street.  
4.—Arrow Lakes, seeing the Switzerland of America.

RC 84, A-2-2-8, VO 16  
ELEVATED RE 105  
P 1

Parks Canada  
Parcs Canada

National Archives of Canada  
Archives nationales du Canada

REPEAT/  
RÉPÉTITION