

**MATINEES
WED & SAT
BEST SEATS
25 & 50c**

GRAND OPERA HOUSE

PRICES NEVER CHANGE

**MATINEES
WED & SAT
BEST SEATS
25 & 50c**



JAMES RENNIE
in "The Confession."

NOTHING BUT PRAISE FROM THOSE WHO HAVE SEEN THIS GREAT PLAY

NO MORE POWERFUL
SERMON HAS EVER
BEEN PREACHED

THE

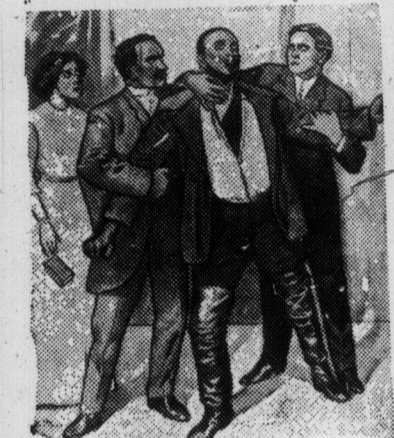
ENDORSED BY THE
LEADING MINISTERS
OF THE COUNTRY

CONFESSION

A DRAMA THAT APPEALS TO THE HIGHER IDEALS OF RELIGIOUS ENTHUSIASM



MISS RODS CAMPBELL



JAMES RENNIE
—AND—
ALLEN BRANDE
IN "THE CONFESSION"

NEXT WEEK—FIRST TIME HERE OF THE POPULAR BOOK PLAY "THE INNER SHRINE" WITH A GREAT CAST AND N.Y. PRODUCTION—NEXT WEEK

Never Run Over

Detachable and Interchangeable to Equalize the Wear.

The Latest Invention in Rubber Heels

The EVANS DETACHABLE RUBBER HEEL CO., LIMITED
457 Yonge St. Phone North 997

RINGS FREE

To Agents

We will give this 14k gold filled Signet Ring with your initial engraved on it or this 14k gold ring set with your birthstone. One of all charges to any boy or girl who will sell 50 sets of our beautiful embossed Xmas post-cards at 10 cents a set (see inside of each set).

If your birthday is in January you should wear a garnet. February, amethyst. March, bloodstone. April, diamond (brilliant). May, emerald. June, pearl. July, ruby. August, sapphire. September, sapphire. October, opal. November, topaz. December, turquoise.

Send us your name and address and we will send you the cards to sell. When sold send us the money and we will send you the ring you choose. Address:

Homer Warren Co., Dept 173, Toronto.

J. G. STEWART, V.S.

Specialist on Surgery.

Diseases of Horse and dog skillfully treated.

Office 156 Simcoe St.
PHONE
Adelaide 850
Residence
286 North Lisgar Street
PHONE
Park. 1829



ROSE CAMPBELL, WHO WILL BE SEEN IN THE FAMOUS RELIGIOUS DRAMA, "THE CONFESSION," AT THE GRAND ALL THIS WEEK.

ARTIFICIAL LAVA FOR INSULATION.

A method of making an insulating material known as "artificial lava" was recently patented. Talcum with a binding material of magnesium silicate is put under high pressure and simultaneously heated until it melts. At a temperature of 1832 deg. F. the mass is pressed into the desired shape. On cooling it is a non-conductor and withstands high temperatures as well as natural lava.

Simply Operated Perfectly Dustless

Samuels' Dustless Ash Sifter

has filled the long-felt want for an ash sifter that embodies every modern convenience and conducts to the sanitary conduct of the household. Devoid of all useless frills—just a plain but very practical device that does its work well and with absolute economy. Pays for itself quickly by the money it saves.

SEE US FOR FREE PARTICULARS AND PRICES.
For sale by all leading Hardware dealers.

Manufactured only by
J. SAMUELS
279 Queen W. Tel. Adel. 1330

Xmas Spectacles WHY NOT?

A delightful and very useful present for your older relatives or friends is a modern spectacle or eye-glasses fitted by a skillful Optometrist, such as we have. Readers or any other article in Optical Goods are presents to please and to last.

If this suggestion appeals to you, come in and see G. Sparito, our Optometrist and Optician, who will give you all the information in regard to it.

H. W. Tisdall
OPTICAL DEPARTMENT OF
FACTORY-TO-POCKET JEWELRY STORE.
150 YONGE STREET,
TORONTO, ONT.

GLEDHILL DIAMOND JEWELRY FOR CHRISTMAS

Now is the best time to order such Diamond Jewelry as Brooches, Rings, Earrings, Necklaces, etc., while there is time to have them made to your order. Our stock of Diamonds is at its best, and includes every size of stone. It is here that you can procure Diamonds at prices lower than elsewhere, because we import direct, do business under small expense, and are satisfied with small profits. Your inspection invited.

R. A. GLEDHILL
21 YONGE STREET ARCADE.
Issuer of Marriage Licenses.

THE CONFESSION.

"The Confession," by James Hallett Reid, which enjoyed a successful run at the Broadway Bijou Theatre, New York City, will be seen at the Grand all this week. "The Confession" dares to tell the truth, and in its telling unfolds a dramatic story of power, strength and literary merit. It uses for its theme a vital subject—a priest's duty to his church versus his duty to the state. In fact, it is a story that runs the gamut of every human emotion, and yet in Mr. Reid's manuscript there is not a line that would offend the most sensitive. No mere absorbing tragedy has ever been conceived, no greater stage picture and lesson presented. This epoch of Christianity provides material for a play of unusual interest, unlike anything else ever produced. "The Confession" will live for its theme and purpose; it is too great to die; Truth cannot die. Right must conquer might. Mr. Reid is firm in his belief that a much abused public will welcome a play with real life interest, not depending on the sensational or vulgar for its success, but rather upon truth, which, since time began, has always been stronger than fiction. James Rennie, who is playing the leading role, is being particularly commended upon his sublime rendition of the character of the Reverend J. J. Bartlett. Archie Allen, who is playing the "Attorney," is being commended upon nightly for his clever work. He has been seen here before in "Ben Hur" and with William Gillette in "Sherlock Holmes." Allen

FREE TO BOYS!

The American Model Builder

The complete model building outfit containing ninety-nine different parts, and which will build twenty different working models of machinery, carts, motors, etc., will be sent express prepaid to any boy selling only 40 sets of our embossed Xmas Cards at 10 cents a set (6 lovely cards in each set).

The American Model Builder is a collection of mechanical parts constructed on strictly scientific principles, and is designed to teach mechanical construction, and at the same time furnish amusement.

These outfits comprise all the main parts used in machinery, such as Pulleys, Gears, Pinions, Axles, Beams, Machine Screws and Bolts, etc. All of the parts are made of brass and steel, nickel-plated, and enable anyone to build perfect-working models of Derricks, Bridges, Traveling Cranes, Fire Ladders, Factory Trucks, Railway Signals, etc. In the complete manual of instructions accompanying each outfit 20 different models are fully described, and many more can be designed by the boy himself, thereby developing his inventive faculties.

All parts are made interchangeable and any model can be taken down and same parts used in the construction of other models.

Send your name and we will send you the cards. When you send us the \$4 and we will send you the whole outfit. Address:

HOMER-WARREN CO.
DEPT. 172 : TORONTO, O.

YONGE ST. 84 north of Bloor. Foot. Reasonably TANN. Realty Broker.

PROBS—

FOUR AWAY GU

Two From Found M Half Froz at Mithi From A Have No

Choosing the the same hour, reformatories es so far oity to Ranging in year Darling and L Alexandra Indu Books and D Mercer Reforme the watch kept Alice Bodke hours afterwar along the beach in their light erting from the night. The two kept to the beach way from Mith almost exhaust found them.

The two from trial School hav

HIT BY FROM

Samuel Tay Loaded W Dischar M

White handl revolver at his ayenue yester Taylor, aged 21 ed the weapon. left shoulder a coming out at t He was atte 17 Lansdowne the Western H motor car, whi in a bad condit

TORONTO FOUND

John C. Patu Failu

OTTAWA, I John C. Paton, of Nesbit and A dead in bed in dra Hotel this was only in had been with His parents res was evident

LE