

Two Entrances to the Men's Clothing Department, Queen Street.

# EATON'S DAILY STORE NEWS

Store Opens at 8:30 a.m. Closes at 5 p.m.

## The First Saturday of Spring Blossoms With New Clothes For Men and Boys Introducing the New "Fashion Park" Suits for Men, \$25 to \$35

The New Models for Spring Wear are the Very Essence of Smartness Both in Design and Pattern--See the Initial Display Saturday in Men's Clothing Dept.--Main Floor

### Descriptions of Some of the Smartest Models

THESE American-made "Fashion Park" suits embody an individual elegance of style that will appeal to the well dressed man. The coats are cleverly designed with the proper symmetry of line, nicety of proportion and possess all the little details of style and finish that smart dressers appreciate.

The materials are all exceptionally fine qualities and in patterns and shades that are quite new and distinctively attractive.

### See the New All Round Slip-Through Belt Models

A distinctly new style features a medium length coat with high waist and loose all-round slip-through belt that can be worn outside or inside front of coat. Belt is loose at back, being stitched only at the sides. This model is skeleton lined and has large inverted pleat down centre, both below and above belt, and fancy yoke at back of shoulder. Crescent shaped pockets without flaps and narrow lapels. Vest has five buttons and patch pockets. Trousers are form-fitting at hips, have self belt with tunnel loops and are bound on top. This model is shown in light grey tweeds, with dark grey and quiet green stripes; also in a brown and grey mixture, with a red thread stripe. Sizes 35 to 42. Price . . . . . 25.00 and 27.50

Another very stylish model has double-breasted, form-fitting coat, with loose half-belt sewn on at each side. When coat is on, belt tightens and gathers in the back in a neat pinch-back effect, with small pleats. Has patch pockets and neat, narrow lapels. Vest is unusually smart, with long peaked points and patch pockets. Price . . . . . 30.00

Another model in the popular pinch-back style, with sewn-on belt at back of waist and five short knife pleats above belt. Front of coat has patch pockets and narrow lapels. Materials include cassimere-finished tweeds, in light grey, with faint, lighter grey. Sizes 35 to 44. Prices . . . . . 27.50 and 30.00



### Other "Fashion Park" Suits in More Conservative Styles

IN single-breasted, neat fitting plain back and front style with soft narrow lapels and straight flap pockets, are various models made of worsteds in fancy mixtures, stripes and checks, Cheviot finished tweeds in blue with thread stripes in plain greys. Of particular mention is a light and dark grey mixture made of silk and wool material at . . . . . 35.00

All these models are lined throughout and have neat narrow fitting trousers with cuffs, self belts and bound tops. Sizes 34 to 44. Prices . . . . . 30.00, 32.50 and 35.00

### Navy Blue "Fashion Park" Suits in Plain and Fancy Styles

Beautifully Finished Navy Blue Serge and Cheviot Suits, in single-breasted style, with neat, soft rolling lapels, and smart cutaway fronts; also double-breasted, form-fitting styles, with loose half belt sewn at each side of back. These have patch pockets and soft lapels, rolling to second button. Sizes 35 to 44. Price . . . . . 28.00 and 30.00

### Neat-Fitting Suits for Stout Men

These Suits are specially designed for stout figures, whether short or tall, and are well tailored of materials that are serviceable. Included are worsteds, cassimere-finished tweeds, in plain greys, medium and dark greys, with thread or hairline stripes, small checks, pin checks. All are three-button style, with soft rolling lapels and straight flap pockets. Trousers with or without cuffs. Sizes 38 to 50. Prices, \$20.00, \$22.50, \$25.00, \$30.00, \$32.50 and . . . . . 35.00

### Easy Fitting Spring Weight Slip-on Topcoats at \$15.00

Men's and Young Men's Smart Swagger Slip-on Topcoats, made of spring-weight tweeds, with large patch pockets with flaps, and a few with slash pockets. Lined in shoulders and sleeves. Patterns include light and dark grey, brown or green mixtures, stripes and checks. Sizes 33 to 42. Price . . . . . 15.00

## An Interesting Collection of Good Values in Boys' Spring Clothing

It's Only Necessary to Look at the New Pinch-Backs, the New Belt Effects, the Splendid Patterns, in Good Serviceable Materials, and the Price Tickets on Each Garment, to Realize That the Eaton Selection of Boys' Suits is Up to the Criterion of Fashion and the Standard of Eaton Values

### Big Choice of Patterns in Newest Styles in Suits for Big Boys, \$5.50 to \$15.00

**At \$5.50**  
Big Boys' Suits, made fine, smooth-finished tweeds, in rich, dark brown stripe effects. They are single-breasted style, with yoke and knife pleats running to bottom on each side of front and back. All have loose belt at waist, strong body linings and bloomer pants. Sizes 29 to 34. Price . . . . . 5.50

**At \$10.50**  
Big Boys' Suits, made of worsted-finished grey tweeds, in checks, rough-finished cloths, with stripe effects. Designed in smart pinch-back styles, with yoke at back and three-piece sewn-on belt, with fancy pleats at back. All lined throughout. Bloomer pants. Sizes 29 to 34. Price . . . . . 10.50

### Spring Suits in Lively Styles for Small Boys, \$4.50 to \$8.75

Smart Spring-weight and Serviceable Tweed Suits for the little chaps, 6 to 10 years of age, are in a huge assortment of patterns and in the latest styles for spring wear.

Included are grey, fawn and brown shades, in neatly-woven checks, broken checks, pick-and-picks, diagonal or herringbone effects, and hosts of smart stripe effects--by the way, stripes are to be very popular this season. They are in various fancy Norfolk styles, many in the pinch-back effects that boys prefer. All have roomy bloomer pants. Sizes 24 to 28. Splendid values at \$4.50 to . . . . . 8.75

**At \$6.95**  
Big Boys' Suits, made of mixed grey or brown tweeds. Pinch-back and Norfolk styles included, with pleats and sewn-on belt at waist. Have patch pockets, neat lapels and fine twill linings. Bloomers are full fitting and have belt loops, watch pocket and strap and buckle at knee. Sizes 29 to 34. An extra good value at . . . . . 6.95

**At \$8.50 to \$15.00**  
Big Boys' Suits, in great assortment of navy blue serge materials, in worsted or cheviot finishes. Many of these materials are woven from all-wool yarns, and are dependable qualities that we guarantee against fading or shining. They are fashionably tailored in pinch-back and other fancy pleated styles and all are lined throughout. Bloomers are neatly made and have belt, watch pocket and expandable knee bands. Sizes 29 to 36. Prices, \$8.50, \$10.50, \$12.50, \$13.50 and . . . . . 15.00

### Swagger and Neat-Fitting Spring Topcoats for Boys, \$6.00 to \$10.00

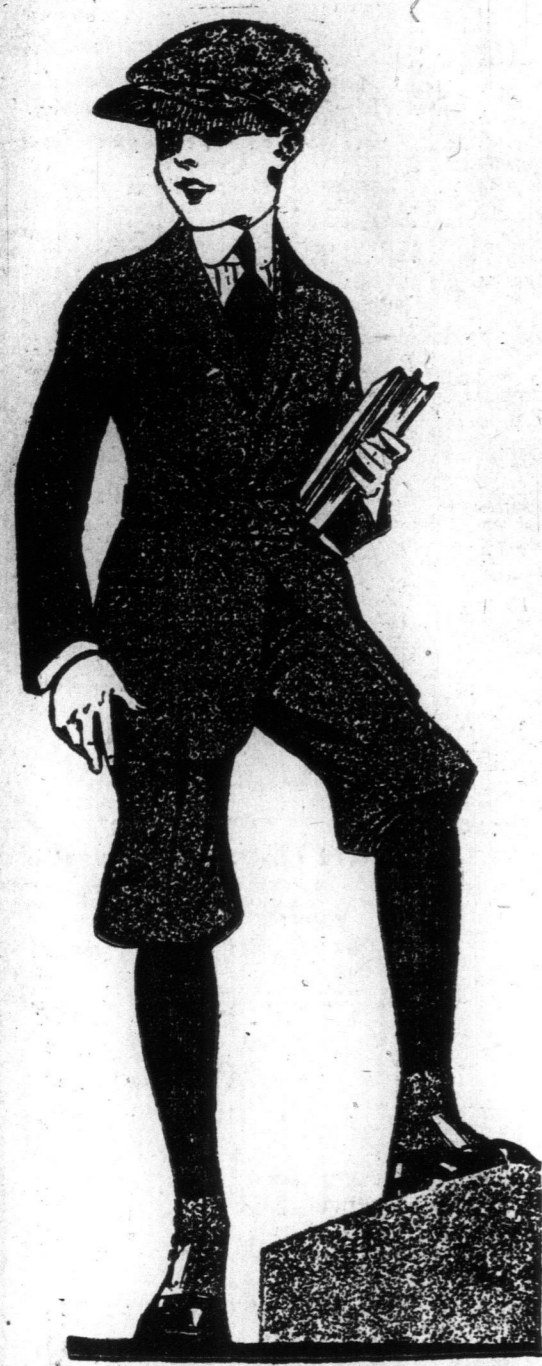
Big Boys' Topcoats, made of medium shades of grey, in neat mixed patterns. They are in the fashionable full box-back style, single-breasted, and have peaked lapels, split sleeves, with fancy cuffs and patch pockets, with flaps. Sizes 26 to 28, price, \$6.00; sizes 29 to 33, price, \$7.00; sizes 34 and 35, price . . . . . 8.50

Big Boys' Spring Overcoats, made of rough-finished tweeds, in pretty shades of brown showing stripe patterns. They are single-breasted models, with velvet collars, full back, set-in sleeves, with fancy cuffs; patch pockets and fine twill body linings. Sizes 29 to 33, price, \$8.70; sizes 34, 35 and 36 . . . . . 9.90

Boys' Spring-weight Topcoats, made of rough-finished tweeds, in grey or fawn mottled effects. They are designed in three-button, single-breasted style, with wide lapels, form-fitting shoulders, loose-fitting back, split sleeves, with cuffs and patch pockets. Sizes 25 to 28, price, \$7.50; sizes 29 to 33, price, \$8.50; sizes 34 and 35, price . . . . . 10.00

### Smart Spring Reefers for Small Bops, \$5.50 and \$7.50

Small Boys' Navy Blue Cheviot Serge Reefer Coats, in double-breasted full box-back style, with velvet collar, brass buttons, and some with emblem on sleeve. Sizes 3 to 10 years. Prices . . . . . 5.50 and 7.50



THE T. EATON CO LIMITED

Stripped  
Tsar  
MOOD  
Go Any-  
to Any  
former em-  
Romanoff,  
be Solo pal-  
patch from  
n at Tsars  
respondent,  
but was hagg-  
ing and form-  
ment of Cor-  
Around his  
offer and he  
n his belt,  
the former  
St. George,  
d by Prince  
ned while  
ck Thursday  
dining salon  
ted his suite  
with him and  
for an hour  
to his suite  
of them. The  
he shoulder,  
em, Nicholas  
ur services  
where.  
g from the  
nent sent to  
mer emperor  
heft to whom  
ate. Their  
ent at head-  
board the im-  
lowder's em-  
l. General  
of the com-  
replied;  
ewhere and  
es occupied  
dinal Nikon  
the former em-  
pers refused  
sed the de-  
pressed  
Bostonians  
eral Sir Sam  
awa tonight  
and Hartford,  
of honor at  
own by the  
of these cities  
is deeply im-  
of patriotism  
ng which he  
the meeting  
of the banquet  
always been  
United States  
human liberty,  
I attended  
spirit is still  
ghes will ad-  
commerce of  
will speak at  
helping  
patriotic fund  
Sir Herbert  
Canadian par-  
the Canadian  
y providing for  
men, aided ma-  
ment of 100,000  
public meeting  
plans for or-  
mitted in the  
discussed.  
nt, retired, has  
urman of the  
organized un-  
Navy League.  
e navy depart-  
Return  
uke Nicholas  
despatch to  
from Copen-  
statement  
Nicholas, com-  
in the Can-  
correspondents  
Tiflis, Trans-  
regime is im-  
ver consent to  
I look for-  
in the war.  
on in the in-  
I am sure  
able to pre-  
with the sup-  
INSPECTOR  
Capt. E. T.  
ted chief in-  
technical ad-  
ventions board.  
plant of the  
ary of Tren-  
lant in Canada  
explosives. He  
vision over the  
no-tolol, gun-  
er and nitre  
WNINGS  
summer camping,  
for as goods are  
Limited  
TORONTO  
Eyes  
to "Luke."  
ptician with  
ars' experi-  
2568.  
OPTICIAN  
(Upstairs)  
pson's)