

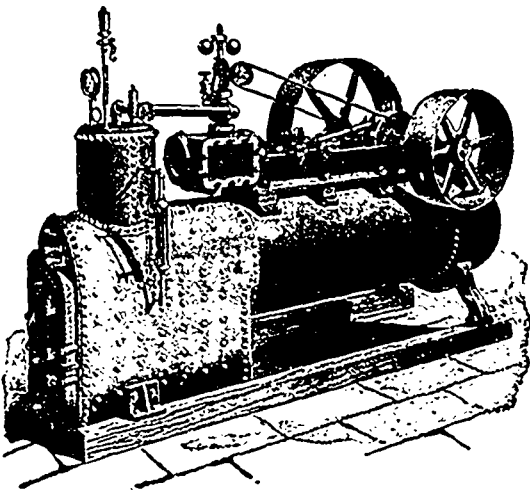
We do not acknowledge the possibility of better goods than ours being made in

AXES GANT-HOOKS PEAVIES and SKIDDING TONGS

And all Tools Used in Lumber Camps.

EVERY ARTICLE BEARING OUR NAME FULLY GUARANTEED.

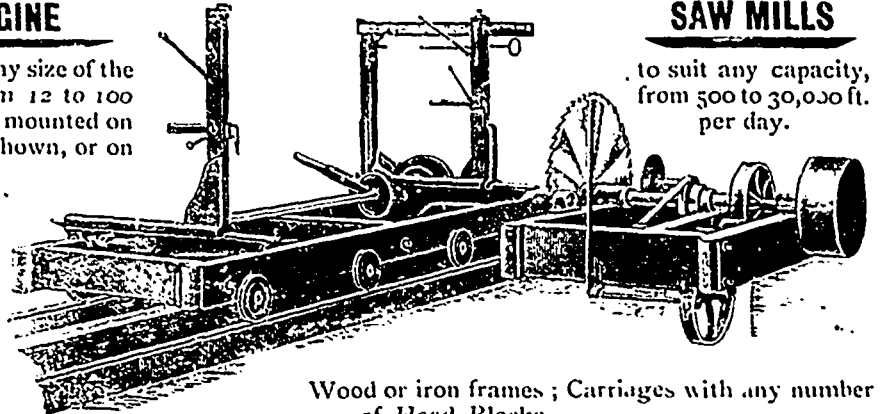
James Warnock & Co., - Galt, Ont.



PORTABLE ENGINE

We can furnish you any size of the above style Engine from 12 to 100 H.P., either on Skids or mounted on wheels with Engine as shown, or on separate Frame.

Also Engines, Boilers, Double Edgers, Trimmers, Top Saw Rigs, Log Jacks, Niggers, Shafting, Pulleys, Gears, Saws, etc. We can save you money. Let us quote you prices. Catalogues free.



SAW MILLS

to suit any capacity, from 500 to 30,000 ft. per day.

Wood or iron frames; Carriages with any number of Head Blocks.

ROBT. BELL, JR., Box 35, HENSALL, ONT.

A SEVERE test of a Turbine is to place it under an abnormally low head. Such a condition brings out pre-eminently the virtues of

“LEFFEL”
“VULCAN”
AND
“PERFECTION”

TURBINES

We have these wheels operating with the utmost satisfaction under heads as low as three feet. They are equally brilliant in performance under average or very high heads, and the measure of their adaptability is *the utmost that can be required of them.*

We make special designs for situations calling for unusual combinations of speed and power. Such occur frequently in the development of Electrical Energy and the installing of Pulp Machinery, and can be provided for with either vertical or horizontal wheels, singly or in units of pairs.

If you do not use a Turbine it may be to your interest to learn something of

THE “LANE IMPROVED” SINGLE AND DOUBLE CIRCULAR SAW MILLS

of which we are the original manufacturers in Canada. These mills stand very high in the consideration of all who have used them, and you can very easily repeat their experience to your own satisfaction and benefit. We manufacture also Vertical and Horizontal Automatic and Hand-fed Shingle Machines of great capacity and excellence of work; Gears, Shafting, Hangers, all kinds of Bearings, Pulleys, Shingle Packers, &c. For printed matter address

MADISON WILLIAMS

H. E. PLANT, Agent
Common and Nazareth Sts., MONTREAL.

Successor to Paxton, Tate & Co.

PORT PERRY, ONT.