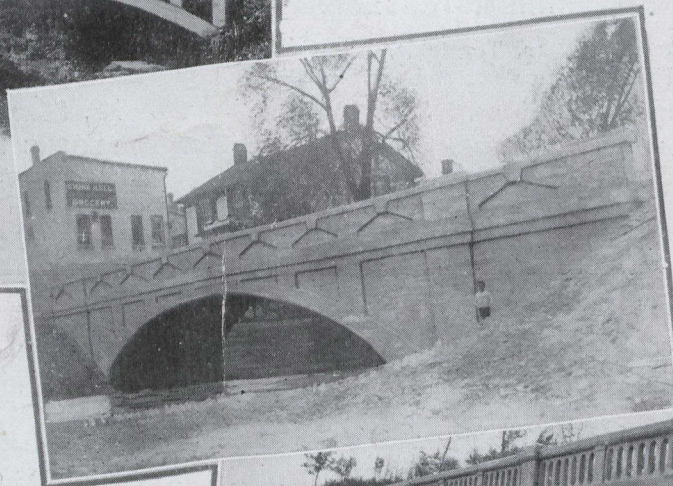


CANADA CEMENT  
**CONCRETE**  
FOR PERMANENCE



## All Types of Bridges Best Built of **CONCRETE**

No bridge requirement can be too pretentious and none can be too insignificant, for the use of Concrete.

No road is better than its weakest bridge—Concrete has the strength and permanence necessary to the building of bridges that will sustain the traffic that our highways are being called upon to carry.

From the standpoint of the buyer the Concrete Bridge is the most economical type that can be constructed. It is reasonable in first cost and the up-keep expense is negligible.

When, to these practical advantages, there is added the undeniable beauty of the Concrete Bridge and its adaptability to varying requirements in the way of bridges and culverts, it is no wonder that Concrete is being used in an increasingly large number of cases.

Let us help to solve your Bridge and Culvert problems.

— SPECIFY —  
**Canada Cement**  
Uniformly Reliable

We maintain a Service Department to co-operate in all lines of work for which Concrete is adapted. Our library is comprehensive and is at your disposal at all times without charge.

# Canada Cement Company Limited

HERALD BUILDING - MONTREAL

SALES OFFICES AT MONTREAL, TORONTO, WINNIPEG and CALGARY