

BRITISH COLUMBIA

Fruit and Farm Magazine

A Monthly Journal Devoted to the Interests of the Man on the Land.

Vol. VI.—No. 13

Vancouver, British Columbia

[\$1.00 per year
in Advance

The Colony Farm, Essondale, B.C.

The Colony Farm at Essondale, B. C., in the Fraser Valley, run in connection with the mental hospitals, was started four years ago by Dr. C. E. Doherty and his staff, and had in its origin the idea of raising sufficient produce for the maintenance of the two institutions, and also to furnish outside employment to the patients.

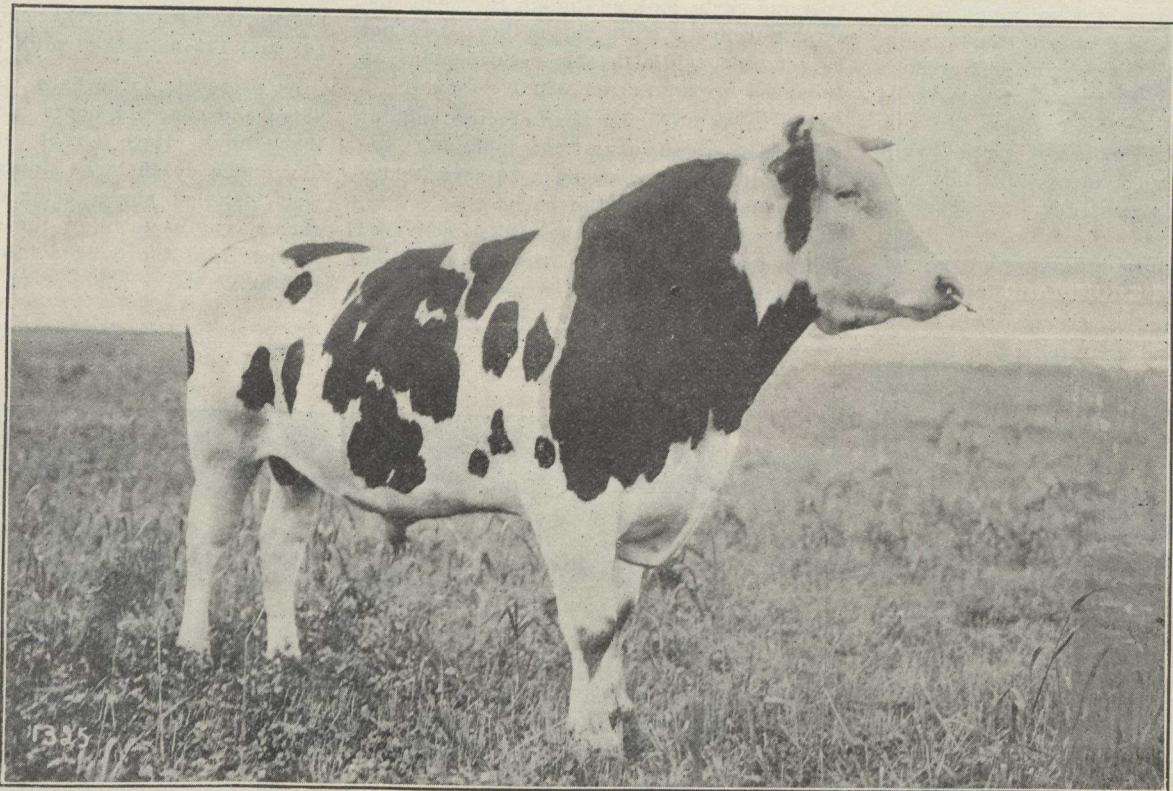
one end in view—that of having the finest farm in Canada, if not on the continent.

Conoly Farm.

It is absolutely essential that an institution of the magnitude of the Mental Hospital should have a farm in connection with it, and, although the initial expenditure

harvested in good condition, with the exception of the oat-crop, which was so heavy that it fell, and as a result had to be cut and used for green feed, thus showing a high price for the cost of oat yield per acre.

There is under cultivation considerably more of the upland, and, although this is



AAGGIE CORNUCOPIA NEWMAN.

Since the former's departure with the Overseas Contingent the work has been ably carried on by Acting Medical Superintendent Dr. J. G. McKay. Dr. McKay takes great pride in the farm, and has gathered around him an efficient staff, each member of which is a specialist in his branch of work. All are united in perfect harmony with the

may appear to be large, the results will, in the future, amply justify this expenditure and ultimately be a great saving in the maintenance of the mentally afflicted of the Province.

During the past year the work done at Colony Farm has been highly satisfactory; the crops have been abundant and were

not merely so fertile for general farming, it will, nevertheless, be particularly valuable for grazing purposes, thus permitting the cultivation of the lowland to its fullest extent, and therefore show a great net profit from year to year.

Today the farm may be placed on record as second to none in Canada. To the success