

Canada Air Compressors.

Self
Contained

Self
Oiling

Steam, Belt or Power Drive.

Straight Line or Duplex.

— For all Duties.—

ANY PRESSURE

ANY CAPACITY.

Canada Foundry Company, Limited.

District Offices:— Montreal Halifax Ottawa, Winnipeg, Calgary, Vancouver, Victoria, Rossland. Head Office:—Toronto Ont.

A REAL CORE

Complete from one end of the drill hole to the other, including a section of the coal seam intact, is the only record on which you can base accurate estimates in exploring and developing coal property.

Sullivan Coal Prospecting Outfits, comprising Sullivan Diamond Drills with improved means for preserving the Coal Core, are the only method in use by which these valuable records can be secured.

Prospecting by Contract a Specialty.

We have done over 60,000 feet of successful coal prospecting in the past two years.

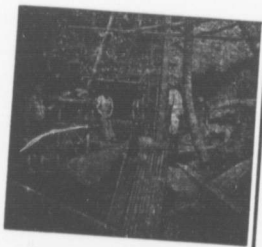
Send for our estimates on your work, and booklet, "Modern Prospecting."

Sullivan Machinery Co.,

CLAREMONT, N. H.

RAILWAY EXCHANGE, CHICAGO, ILL.

L. MATHESON & CO., Ltd., Agents, NEW GLASGOW, N. S.



Prospecting for coal with Sullivan hand power Diamond Drill, Philippine Islands.

A. & W. MacKINLAY

LIMITED.

Rule and Print Special Blank Form.

for Mining and other Industrial

—Corporations.—

BLANK BOOKS ruled to any pattern and Bound in any Style of —BINDING—

135 to 139 GRANVILLE STREET.
HALIFAX, N. S.

That the use of electricity both increases the output of a mine and reduces the cost of production, is demonstrated by actual results.

The well known Canadian Westinghouse Company, makers of the famous Westinghouse electrical apparatus, cite two instances in their booklet (Electricity in Mines) of the great savings inaugurated by the employment of electricity.

In one, electric haulage has enabled a coal mine to double its output and at the same time to reduce the cost of haulage from eight cents to one cent per ton. The total yearly saving in this one item amounts to nearly 30 per cent, of the sum invested in the electric plant. In another, the substitution of Westinghouse motor driven pumps for steam—at a total cost of \$18,000, including Westinghouse Generators, Motors, Gears, etc.—resulted in an annual saving of nearly \$6,000 of plant.