

5. *Grabhamia vittata*, n. sp.—Thorax clothed with rich reddish-brown scales and with two narrow broken creamy lines and a few pale scales at the sides, especially over the roots of the wings; pleura with dense gray scales. Abdomen blackish-brown with basal white bands; venter white. Legs brown, base of femora pale, remainder of femora

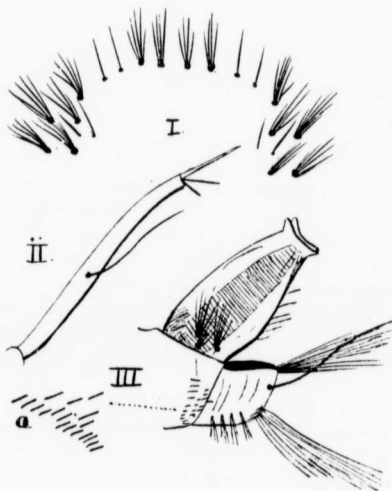


FIG. 15.—*Grabhamia vittata*, larva.

I. Thoracic frontal and lateral hairs; II. Antenna; III. Siphon, *a* basal spines.

and tibiae mottled with white scales; some of the tarsi with basal white bands; last hind tarsal black; ungues of ♀ all uniserrated; of ♂ all uniserrated.

♀.—Head brown with narrow curved yellowish scales, palest in the middle, with numerous upright yellow and black forked scales, flat creamy-white lateral scales with a round patch of flat black ones in the middle of each white area, a pale border along the eyes, black bristles projecting over them, except in the middle where the bristles are golden; antennæ deep brown, basal joint and base of the second joint bright