

# McCormick Turbines

State your Requirements and send for Catalogue



Estimates Furnished for Complete Power Plants, and Results Guaranteed

Represents a pair of 30-inch McCormick Turbines with Governor and Fly-Wheel for regulating speed. The Turbine Shaft is direct connected to a 750 k.w. Generator.

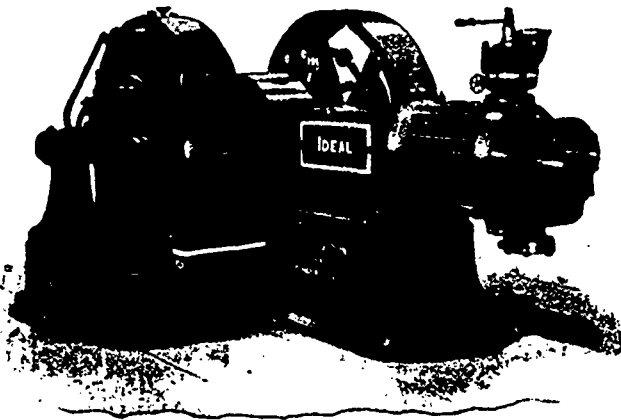
Four Outfits like this, developing 4,000 h.p., and one pair of 51 inch of 1,353 h.p., furnished the Sacramento Electric, Gas & Railway Co., Folsom, Cal. Power is transmitted 24 miles.

**S. MORGAN SMITH CO. - YORK, PA., U.S.A.**

## THE Goldie & McCulloch Co. LIMITED

MANUFACTURERS OF

**IMPROVED STEAM ENGINES AND BOILERS**



Flouring Mills, And the Erection of Same in the Most Complete Style of Modern Improvement.

Wool Machinery, Wood-Working Machinery, Saw Mill, Shingle and Stave Machinery, Fire and Burglar-Proof Safes and Vault Doors.

THE "IDEAL" HIGH SPEED ENGINE, DIRECT-CONNECTED.

**SPECIAL ATTENTION** called to the "WHEELOCK" IMPROVED STEAM ENGINE, also the "IDEAL" HIGH SPEED ENGINE, cut of which appears above, as being Unequaled for Simplicity, Efficiency and Economy in Working, and Especially Adapted for Electric Lighting, Street Railways, Etc.

† GALT, ONT.

## BAIRD & TREE

MANUFACTURERS OF THE

### TREE ROTARY ENGINE

Also J. R. Baird's Electrical, Gas and Gasoline Engines, Water Motors, Etc

ENGINE, BOILER, MILL AND FACTORY REPAIRING

Works: 39 Finkle St., Woodstock, Ont.

