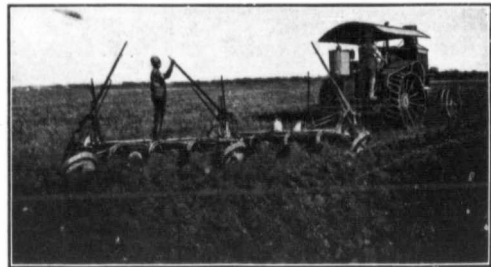


The ORIGINAL KEROSENE TRACTOR

PLOWING



Is it a Question of Plowing? Then it is but a simple matter for the Hart-Parr Gas Tractor to pull its eight 14-inch plows in soil that a horse could scarcely walk over and in which a steam tractor is practically helpless. It will plow its twenty-five to thirty acres per day regardless of ground and never get sick or tired. Does an early planted crop mean anything to you? If so, you can easily figure out what the Hart-Parr can do in your case.

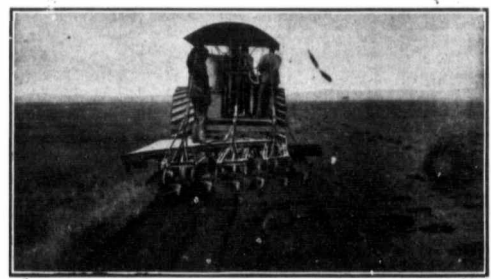
SEEDING



CARON, SASK.

When the ground is plowed it is a horse killing piece of work to get it seeded as the modern wide-cut drill is no easy load. The Hart-Parr will pull drills to the tune of forty or fifty acres per day and at the same time will not injure the land in passing over it any more than horses will. It will in a great many cases by doing such a large amount of work in a short time put much grain in the field to sprout and grow that would otherwise remain in the bin on account of a spell of wet weather that extends over a week or two in seeding time. It is the early seeded grain that invariably yields the biggest crop, a week or two in the spring often times meaning from five to ten bushels per acre when the crop is harvested.

BREAKING



You as a farmer in Western Canada have doubtless had more or less experience with the breaking of raw prairie and you know what a slow, heart-rending process it is when horses are used. You who have tried it also know what it means to have your big steam tractor laid up for weeks on account of rainy weather that makes the ground so soft that your steam engine mires. No such troubles with a Hart-Parr; the hotter the weather the better it works and soft ground is not the 'Jonah' of a Hart-Parr owner. It is always ready to break its fifteen to twenty acres in any kind of weather and any kind of soil.

FIRST IN THE FIELD FIRST TO RUN ON KEROSENE First in the Estimation of Users

The Modern Farm Horse

Farming with a traction engine is no longer an experiment—the advantages over horses—the results accomplished are so great that the question now is, not does it pay to own a tractor, but which one shall I buy. Gas and kerosene tractors have proven themselves to be the practical power, their advantages over steam are many—no danger from freezing, no trouble about impure or scant water supply, no expense of men and teams to draw water and coal, no boiler feeders to choke, no danger, as explosion is impossible. The fireman and expensive licensed engineer are eliminated. A kerosene tractor is ready to start any time—no two or three hours' firing beforehand. The convenience in moving on account of having no coal or water supply can hardly be overestimated. Only one man required to operate a Hart-Parr Gas Tractor. There is no work now successfully done by steam tractors that cannot be done as well or better and more economically by a Hart-Parr Kerosene Tractor. Hart-Parr Tractors are being successfully used in all parts of the world. They are being successfully used for threshing, hay baling, well drilling, feed grinding, running saw mills, plowing, discing, seeding, harvesting, freighting, operating road graders, moving buildings, etc. Hart-Parr Tractors have been aptly named "The Modern Farm Horse." No up-to-date farmer who works considerable land can afford to be without one. Farming with a Hart-Parr Tractor is not an experiment. We can refer you to thousands of farmers who are making more money with "The Modern Farm Horse" than they could with horses. In fact, they are doing what would be impossible with horses. You can run the Hart-Parr Tractor night and day. When your work is done, you can earn several hundred dollars plowing for neighbors.

Lowest Operating Expense

The Hart-Parr burns kerosene. This is acknowledged to be the cheapest fuel for an internal combustion engine. Burned in a Hart-Parr engine designed for kerosene (it will burn gasoline equally as well) the cost of operation is reduced as low as possible. It gives no trouble. It puts money in your pocket on account of its low cost. The enormous demand for gasoline has kept the price constantly increasing and at the same time its quality has greatly deteriorated. With this cheap kerosene, our engines develop the same power and run just as clean as with gasoline; and the quantity of kerosene used per day is no greater than of gasoline. By the use of kerosene for fuel, we reduce your fuel bill from one-third to one-half compared with gasoline.

One Price to Everybody—\$2,800.00 F.O.B. Portage la Prairie

DON'T DELAY. SEND FOR CATALOGUE TODAY. DO IT NOW. We want you to write for our free Hart-Parr catalog. This catalog will tell you all about the Hart-Parr Tractor. It shows in detail the entire construction. It also gives a lot of information regarding actual operating cost, actual daily results accomplished, results of severest tests, etc. This book tells all about the Gas Tractor proposition, fully illustrated cross-section, views, front, side rear views, also views of the various parts. This catalog also shows photographs of the Hart-Parr—threshing, road grading, plowing, discing, seeding, etc. We are vitally interested in the farm power question. We can help you. We will if you give us a chance. Don't think it necessary for you to give us an order if you write us. Just drop us a postal card. It places you under no obligation whatever. Let us show you.

HART-PARR CO.

30 Main St., Portage la Prairie, Manitoba

This in connection with the fact that Hart-Parr engines are constructed in such a manner that repair bills are reduced to a minimum, enables the Hart-Parr owner to get going and keep going regardless of weather or the condition of the soil. The reliable gas tractor is not the one that runs well for a while and then stops. It is one that keeps going all the time that makes money for its owners. Remember that expenses stop when the engine stops.

More Hart-Parr Tractors in Use than all Other Makes of Gas Tractors Combined

In 1903 the first Hart-Parr Tractors were put on the market. The Hart-Parr original Kerosene Tractor. During these eight years we have constantly improved the tractor until today it represents the very greatest efficiency in tractor power. Every part of the Hart-Parr Tractor has gone through the severest tests. We have watched every engine we sold—any defect was promptly rectified and improved. Every weakness was strengthened. It was only through the grueling test of actual operation of thousands of engines under all conditions that some weakness was discovered. It was impossible to discover it in any other way. Where we found a weakness of the Hart-Parr Tractor that could be improved, we improved it. If we had a tractor to tell you of our experiments, our tests, the thousands of dollars we spent to prove our little part of our tractor, you would understand our success today. This tractor religiously adhered to for eight years enables us to offer you a tractor that represents all that experience, brains and money can build.

Easy to Operate

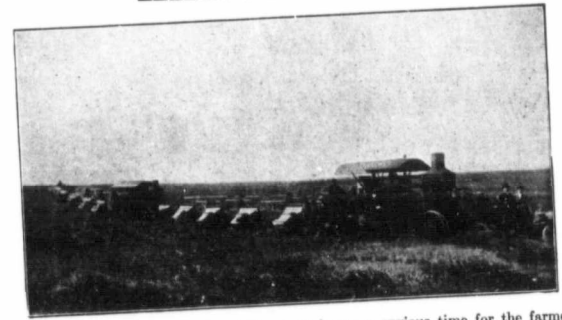
A Hart-Parr Tractor is easy to operate. We will gladly demonstrate to your satisfaction and show you how to run it. If you farm 320 acres or more it will pay you to own a Hart-Parr Tractor. You cannot make big money farming unless you farm right. You can do it with a modern farm horse. Hundreds of others are doing it and what it has done for others it will do for you. We would like to show you what others are accomplishing with Hart-Parr Tractors; lack of space prevents printing here letters from present Hart-Parr owners. We have published a book in detail just what farmers are doing with our tractors. We would be delighted to send you this book of experiences and records free, just for the asking. Write for this complete book and read for yourself what the farmers say about our tractors. Some of them have been operating the same Hart-Parr tractor continuously for five years—they know.

DISCING



The Hart-Parr as a power for discing is limited only by the number of discs that can be attached behind it, at the same time furnishing such a tractive power as to compel the discs to pulverize thoroughly. If you are doing spring plowing when the ground is apt to clog up, place the discs behind the plows in the best possible condition for with once going over the ground, leaving the soil in the best possible condition for there is no better time to make a nice seed bed than when the ground is first plowed.

HARVESTING



Harvesting in Western Canada has ever been an anxious time for the farmer. Hot weather places a low limit upon the endurance of horseflesh and the farmer longs for the power that can be driven to its limit every hour in the day. The Hart-Parr is that power and with four or five 8-foot binders attached behind and travelling at a rate of 2 to 2½ miles per hour, it is but a matter of simple calculation to see what you can do. Remember, you keep going all the time. There are no stops.

THRESHING



Power for threshing is a strong feature of the Hart-Parr. Twenty miles from water is no terror for the outfit that is run by a Hart-Parr. In the belt it develops a large amount of steady power that will drive a threshing machine to a record day's run, as is evidenced by the thousands of letters on file in our office from those who have used Hart-Parr Gas Tractors for threshing purposes. It is results that count with the thresherman and it is results of a profitable kind that the Hart-Parr always gives.

The Chapin Co. Agents for Alberta