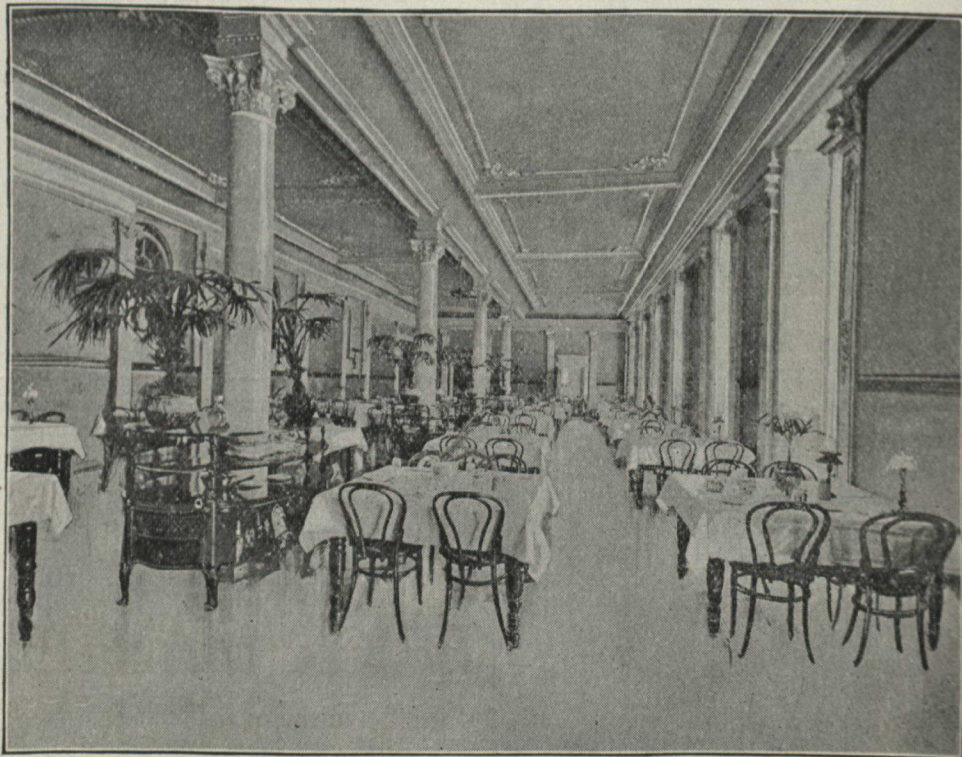




The Great International Double Track Route

IS THE MAIN ARTERY OF TRAVEL

between the East and West, reaching, through its own and connecting lines, the large centres of both Canada and the United States.



THE WELLAND INN DINING ROOM

The St. Catharines Well and The Welland Inn

THE FAMOUS MINERAL SALT SPRINGS

situated at St. Catharines, Ont., 11 miles from Niagara Falls, on the line of the Grand Trunk Railway System, is a happy combination of family hotel and sanitarium. The Welland is designed for a resting place and possesses all the essentials at moderate cost. Mineral Salt Water Baths of various kinds, Massage, Electricity and Special Tonic treatments for overworked minds and bodies. Write to the Manager, The Welland Inn, St. Catharines, Ont., for illustrated descriptive matter, and apply to Grand Trunk Agents for particulars regarding routes and rates.

W. E. DAVIS.
Passenger Traffic Manager,
MONTREAL

G. T. BELL,
General Passenger and Ticket Agent,
MONTREAL