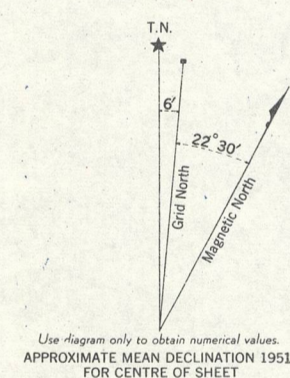




CANADA
DEPARTMENT OF NATIONAL DEFENCE
ARMY SURVEY ESTABLISHMENT

REFERENCE

- Roads:
 - hard surface, all weather... more than 2 lanes Part completed
 - hard surface, all weather... 2 lanes Route No. less than 2 lanes
 - loose surface, all weather... more than 2 lanes All weather
 - loose surface, less than 2 lanes All weather Dry weather
 - Cart Track, Footpath Trail... Cart Track Footpath or Trail
 - Special, Snow Road, etc.
- Railways:
 - standard gauge, multiple track
 - standard gauge, single track
 - narrow gauge, multiple track
 - narrow gauge, single track
- Tramway... on Road
- Bridge, underpass or overpass
- Boundary, International
 - Province or State
 - County or District
 - Township, Seigneurie or Parish
 - City or Town
 - Reservation, Indian, Military, etc.
- Electric Power Line... on Steel Towers on Wood Poles
- Telephone, trunk route
- Triangulation Station
- Boundary Mon. Survey Mon.
- Bench Mark... BM 679.1
- Spot Elevation, (in feet) ... -548
- House, Barn
- Buildings
- Mill or Factory, small, Saw Mill, etc. ... SM
- School ... S
- Church
 - with conspicuous Tower or Spire
- Post Office
- Telephone Exchange
- Mine or Open Cut
- Cemetery or Churchyard
- Quarry
- Sand or Gravel Pit
- Cliff
- Cutting
- Embankment, Dump, etc.
- Lighthouse
- Wharf or Pier
- Foreshore Flats
- Swamp or Marsh
- Lake or Slough, intermittent
- Glacier or Snowfield
- Stream, intermittent
- Irrigation Canal, Ditches
- Inundated Land
- Contours, elevation
 - depression
 - approximate
 - Relief, not indicated by Contours
 - Wooded Areas, light



TO GIVE GRID REFERENCE ON THIS SHEET
FIGURES, IGNORE THE SMALLER figures printed around the margin of the map. These are for finding the full coordinates. USE ONLY THE LARGER FIGURES PRINTED IN THE MARGIN OR ON THE FACE OF THE MAP, viz. 501

POINT		SCHOOL	
FOR STANDARD MILITARY GRID REFERENCE			
East	North	East	North
Take West edge of square in which point is entered, the figure printed opposite this line on East or West margin or on the line itself on the face of the map. Estimate northwards.	Take South edge of square in which point is entered, the figure printed opposite this line on East or West margin or on the line itself on the face of the map. Estimate northwards.	090	612
STANDARD MILITARY GRID REFERENCE		090612 (To nearest 100 Metres)	

Nearest similar grid reference - 150,000 Metres; Approximately 63 Miles

ONE THOUSAND METRE
UNIVERSAL TRANSVERSE MERCATOR GRID
ZONE 12

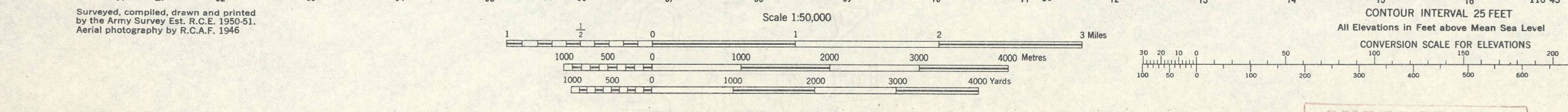
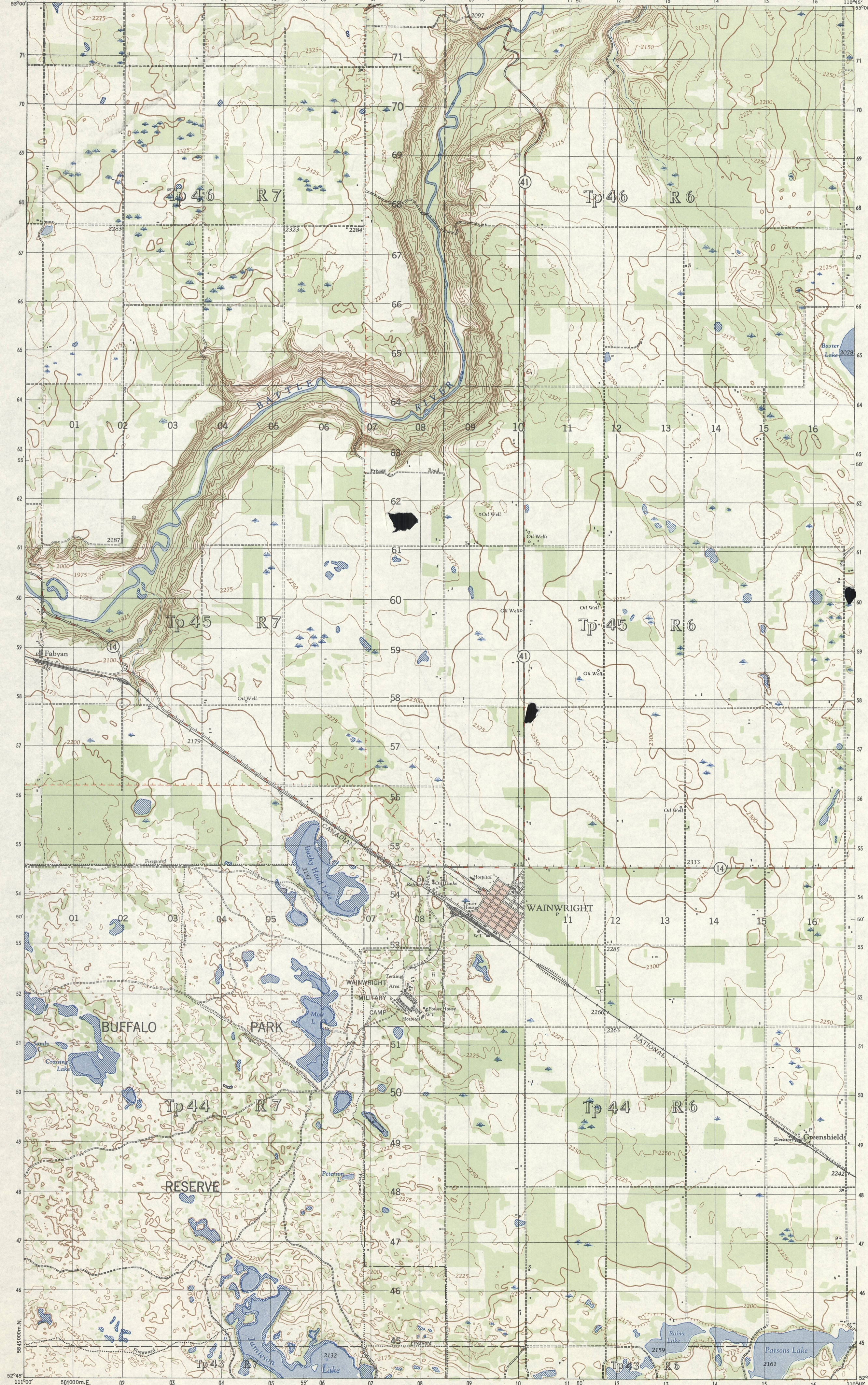
INDEX TO ADJOINING SHEETS

111°30'	110°30'
73 5/8	73 1/2
73 1/4	73 1/16
73 1/11	73 1/10
73 1/1	73 1/2

See "Index to Maps Available" for sheets published.

Note: Copies of this map required for official purposes may be obtained from the Army Survey, East, AND Ottawa.
The general public may obtain copies from the Map Distribution Office, Dept. of Mines and Technical Surveys, Ottawa, at 25 cents per copy.

WAINWRIGHT
73 1/15 WEST HALF
FIRST EDITION



SUPERSEDED EDITION

Surveyed, compiled, drawn and printed by the Army Survey, East, R.C.E. 1950-51. Aerial photography by R.C.A.F. 1946